

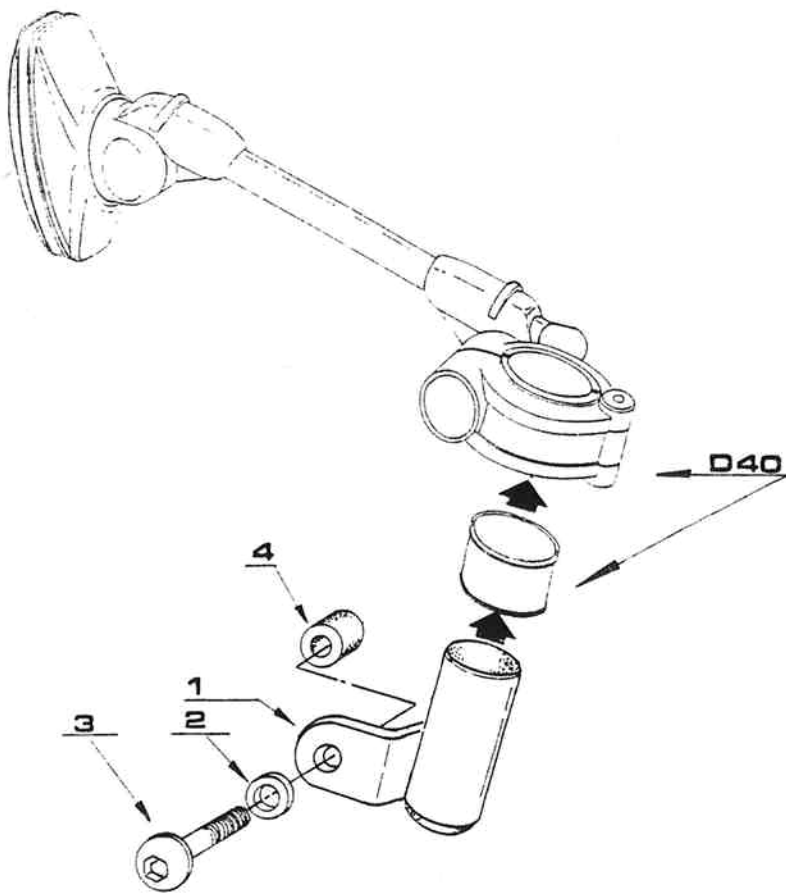


art. Z 278

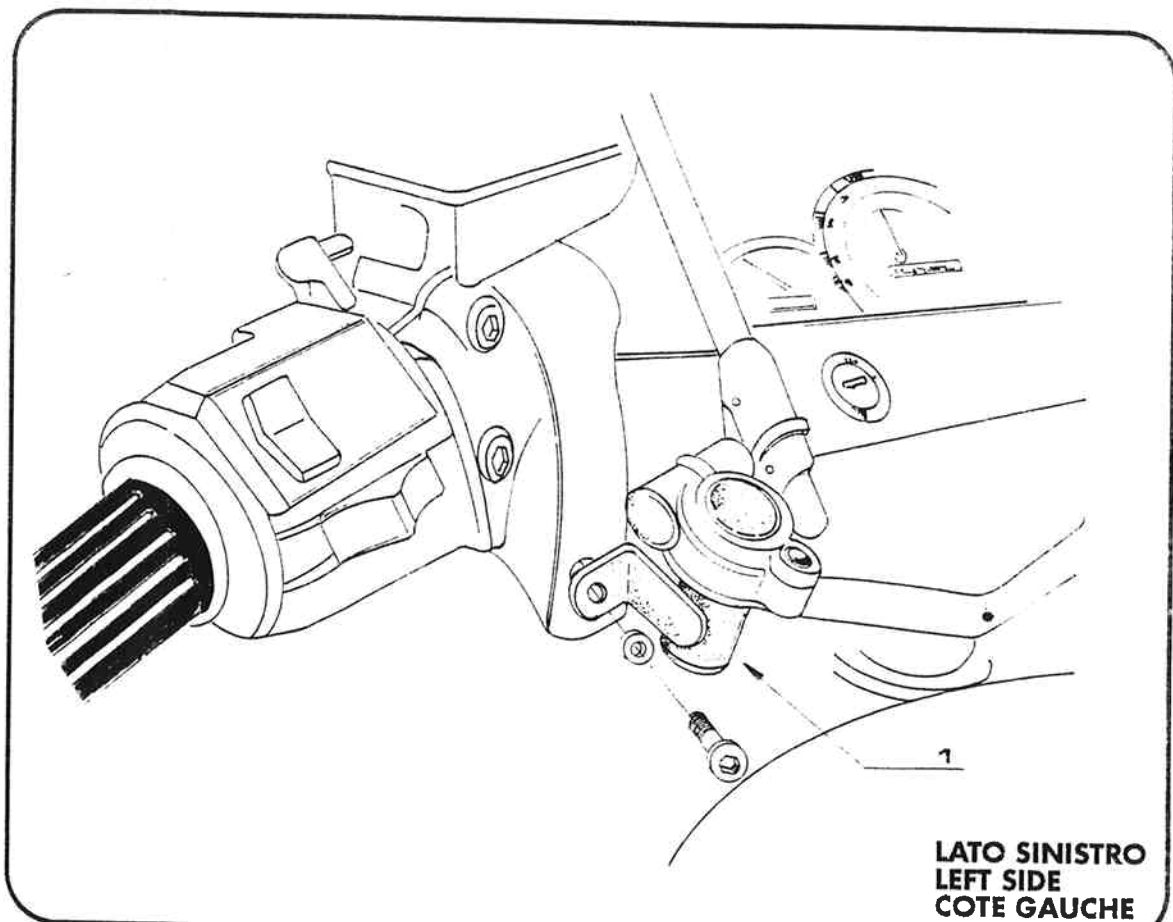
ADATTATORE PER MANUBRI "NON TONDI"

ISTRUZIONI DI MONTAGGIO - MOUNTING INSTRUCTIONS
INSTRUCTIONS DE MONTAGE

N°	DESCRIZIONE DEL KIT (KIT DESCRIPTION) (DESCRIPTION DU KIT)	QUANTITA' (QUANTITY) (QUANTITE)
1	SUPPORTO SUPPORT SUPPORT	2
2	RONDELLA \varnothing 8 X 14 WASHER \varnothing 8 X 14 RONDELLE \varnothing 8 X 14	2
3	VITE TBEI M 8 X 30 SCREW M 8 X 30 VIS M 8 X 30	2
3B	VITE TBEI M 8 X 40 SCREW M 8 X 40 VIS M 8 X 40	2
4	DISTANZIALE \varnothing 13 X 10 VIS M 8 X 85 COLLAR DISTANCE \varnothing 13 X 10 COLLIER DE SEPARATION \varnothing 13 x 10	2



ESEMPIO DI MONTAGGIO
MOUNTING EXAMPLE
EXEMPLE DE MONTAGE



LATO SINISTRO
LEFT SIDE
COTE GAUCHE