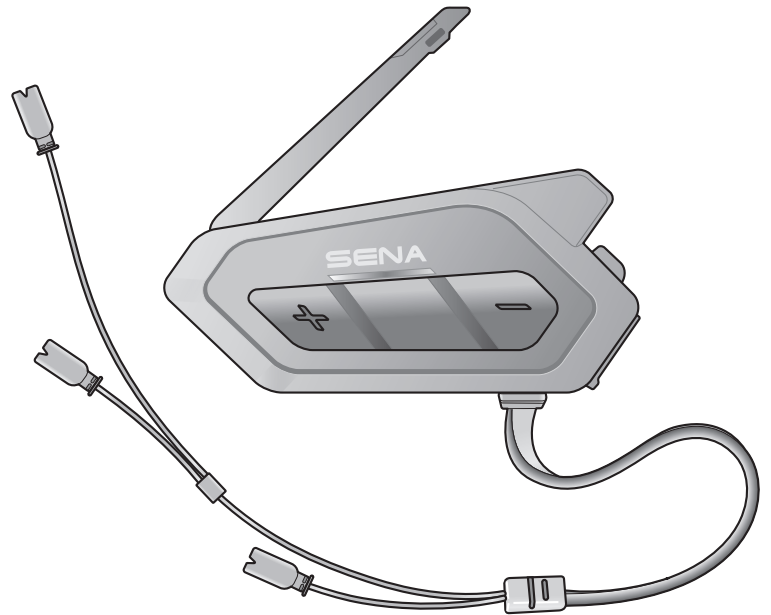


**SENA**



**SOR**

**LOW PROFILE MOTORCYCLE BLUETOOTH®  
COMMUNICATION SYSTEM  
WITH MESH INTERCOM™**

**HD SPEAKERS**

**USER'S GUIDE**

## LEGEND:



**Tap** button the specified number of times



**Press and Hold** button for the specified amount of time



"Hello"

**Audible prompt**

# TABLE OF CONTENTS

<b>1.</b>	<b>ABOUT THE MOTORCYCLE BLUETOOTH COMMUNICATION SYSTEM WITH MESH INTERCOM™</b>	<b>7</b>
<b>1.1</b>	<b>Product Details</b>	<b>7</b>
1.1.1	Headset Main Unit	7
<b>1.2</b>	<b>Package Contents</b>	<b>8</b>
<b>2.</b>	<b>INSTALLING THE HEADSET ON YOUR HELMET</b>	<b>9</b>
<b>2.1</b>	<b>Installing the Main Unit</b>	<b>9</b>
2.1.1	Using the Hook and Loop Fasteners for Main Unit	9
2.1.2	Using the Double Sided Adhesive Tapes for Main Unit	10
2.1.3	Using the Clamp for Main Unit	10
<b>2.2</b>	<b>Installing the Speakers</b>	<b>11</b>
<b>2.3</b>	<b>Installing the Microphones</b>	<b>12</b>
2.3.1	Using the Wired Boom Microphone	12
2.3.2	Using the Wired Microphone	14
<b>2.4</b>	<b>External Mesh Intercom Antenna</b>	<b>14</b>
<b>3.</b>	<b>GETTING STARTED</b>	<b>15</b>
<b>3.1</b>	<b>Button</b>	<b>15</b>
<b>3.2</b>	<b>Downloadable Sena Software</b>	<b>15</b>
3.2.1	Sena 50 Utility App	15
3.2.2	Sena Device Manager	16
<b>3.3</b>	<b>Powering On and Off</b>	<b>16</b>
<b>3.4</b>	<b>Charging</b>	<b>16</b>
<b>3.5</b>	<b>Checking the Battery Level</b>	<b>17</b>
<b>3.6</b>	<b>Volume Adjustment</b>	<b>17</b>
<b>4.</b>	<b>PAIRING THE HEADSET WITH OTHER BLUETOOTH DEVICES</b>	<b>18</b>
<b>4.1</b>	<b>Phone Pairing</b>	<b>18</b>
4.1.1	Pairing When the 50R is Turned Off	18
4.1.2	Pairing When the 50R is Turned On	19

4.2	Second Mobile Phone Pairing - Second Mobile Phone, GPS, and SR10	20
4.3	Advanced Selective Pairing: Hands-Free or A2DP Stereo	20
4.3.1	Phone Selective Pairing - Hands-Free Profile	21
4.3.2	Media Selective Pairing - A2DP Profile	21
4.4	GPS Pairing	22
<b>5.</b>	<b>MOBILE PHONE USAGE</b>	<b>23</b>
5.1	Making and Answering Calls	23
5.2	Siri and Google Assistant	23
5.3	Speed Dialing	24
5.3.1	Assigning Speed Dial Presets	24
5.3.2	Using Speed Dial Presets	24
<b>6.</b>	<b>STEREO MUSIC</b>	<b>25</b>
6.1	Playing Music with Bluetooth Devices	25
6.2	Music Sharing	25
<b>7.</b>	<b>MESH INTERCOM</b>	<b>27</b>
7.1	What is Mesh Intercom?	27
7.1.1	Open Mesh	28
7.1.2	Group Mesh	29
7.2	Starting Mesh Intercom	29
7.3	Using the Mesh in Open Mesh	29
7.3.1	Channel Setting (Default: channel 1)	30
7.4	Using Mesh in Group Mesh	31
7.4.1	Creating a Group Mesh	31
7.4.2	Joining an Existing Group Mesh	32
7.5	Reset Mesh	34
7.6	Toggling Open Mesh/Group Mesh	34
7.7	Enable/Disable Mic (Default: Enable)	34



<b>8.</b>	<b>BLUETOOTH INTERCOM</b>	<b>35</b>
8.1	Intercom Pairing	35
8.2	Two-Way Intercom	36
8.3	Multi-Way Intercom	37
8.3.1	Starting a Three-Way Intercom Conference	37
8.3.2	Starting a Four-Way Intercom Conference	38
8.3.3	Ending Multi-Way Intercom	39
8.4	Three-Way Conference Phone Call with Intercom Users	39
8.5	Group Intercom	40
8.6	Mesh Intercom Conference with Bluetooth Intercom Participant	41
8.7	Universal Intercom	43
8.8	Mesh Intercom Conference with Two-way Universal Intercom Participant	44
<b>9.</b>	<b>USING THE FM RADIO</b>	<b>45</b>
9.1	FM Radio On/Off	45
9.2	Seek and Save Radio Stations	45
9.3	Scan and Save Radio Stations	46
9.4	Temporary Station Preset	47
9.5	Navigating Preset Stations	47
9.6	Region Selection	47
<b>10.</b>	<b>VOICE COMMAND</b>	<b>48</b>
<b>11.</b>	<b>FUNCTION PRIORITY AND FIRMWARE UPGRADES</b>	<b>50</b>
11.1	Function Priority	50
11.2	Firmware Upgrades	50

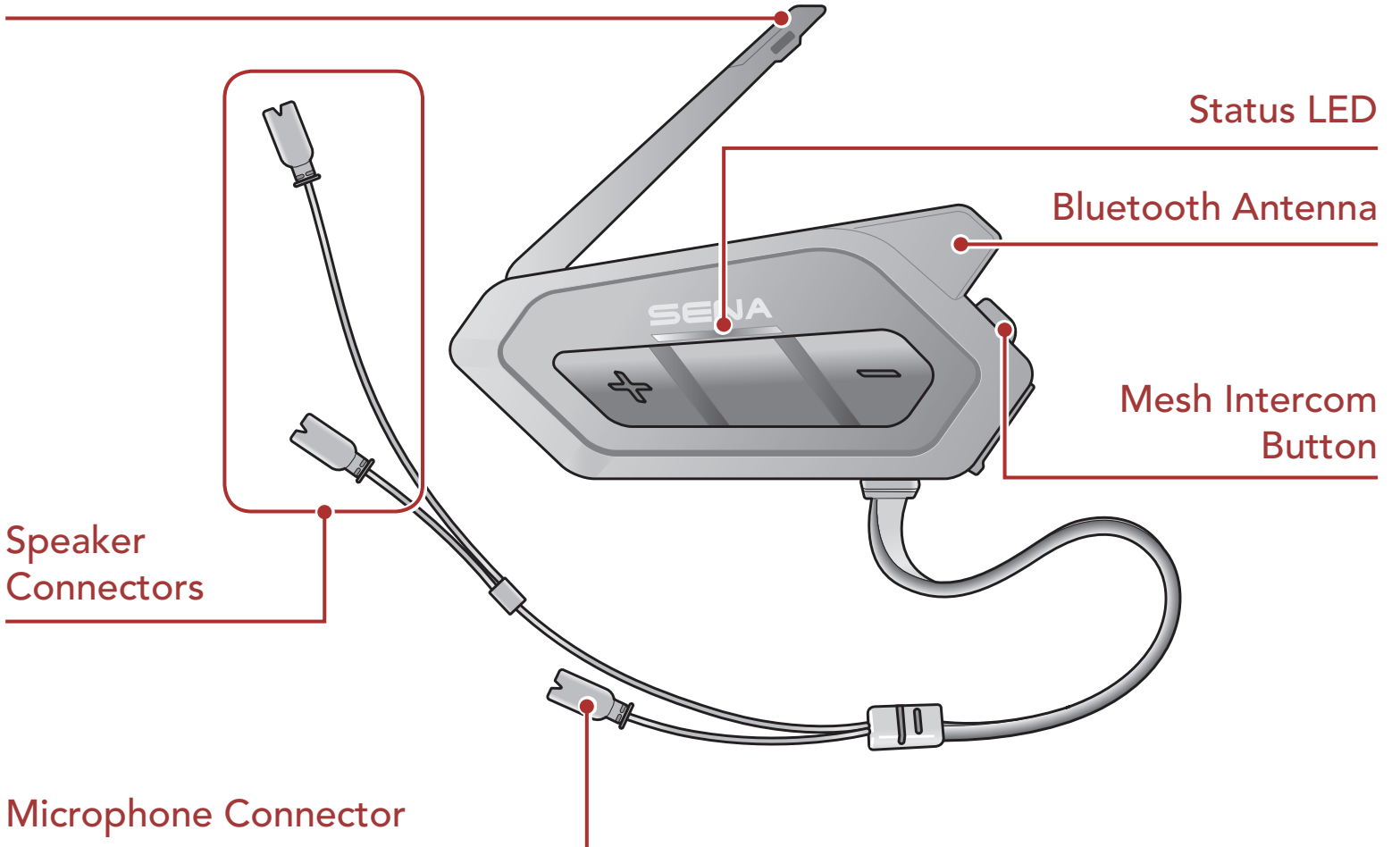
<b>12. CONFIGURATION SETTING</b>	<b>51</b>
<b>12.1 Headset Configuration Setting</b>	<b>51</b>
12.1.1 Delete All Pairings	52
12.1.2 Remote Control Pairing	52
<b>12.2 Software Configuration Setting</b>	<b>52</b>
12.2.1 Speed Dial	52
12.2.2 Channel Setting (Default: channel 1)	52
12.2.3 Unit Language	52
12.2.4 Audio Equalizer (Default: Off)	53
12.2.5 VOX Phone (Default: Enable)	53
12.2.6 VOX Intercom (Default: Disable)	53
12.2.7 VOX Sensitivity (Default: 3)	53
12.2.8 Bluetooth Intercom Audio Multitasking (Default: Disabled)	54
12.2.9 Intercom-Audio Overlay Sensitivity (Default: 3)	54
12.2.10 Audio Overlay Volume Management (Default: Disable)	54
12.2.11 HD Intercom (Default: Enable)	55
12.2.12 HD Voice (Default: Enable)	55
12.2.13 Smart Volume Control (Default: Disable)	55
12.2.14 Sidetone (Default: Disable)	55
12.2.15 Voice Prompt (Default: Enable)	56
12.2.16 RDS AF Setting (Default: Disable)	56
12.2.17 FM Station Guide (Default: Enable)	56
12.2.18 Advanced Noise Control™ (Default: Enable)	56
<b>13. TROUBLESHOOTING</b>	<b>57</b>
<b>13.1 Fault Reset</b>	<b>57</b>
<b>13.2 Factory Reset</b>	<b>58</b>

# 1. ABOUT THE MOTORCYCLE BLUETOOTH COMMUNICATION SYSTEM WITH MESH INTERCOM™

## 1.1 Product Details

### 1.1.1 Headset Main Unit

Mesh Intercom Antenna



Status LED

Bluetooth Antenna

Mesh Intercom Button

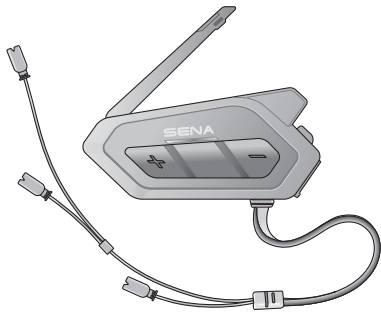
Speaker Connectors

Microphone Connector

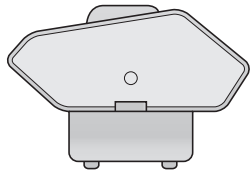
DC Power Charging & Firmware Upgrade Port



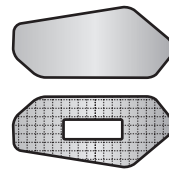
## 1.2 Package Contents



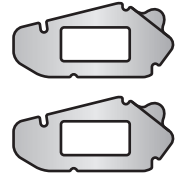
Headset  
Main Unit



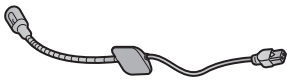
Clamp



Hook and Loop  
Fasteners for  
Main Unit



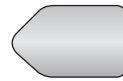
Double Sided  
Adhesive Tapes  
for Main Unit



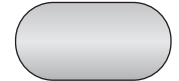
Wired Boom  
Microphone



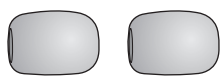
Wired  
Microphone



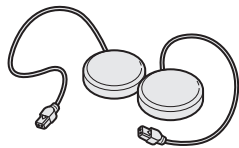
Hook and Loop  
Fastener for  
Boom  
Microphone



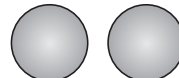
Hook and  
Loop Fastener  
for Wired  
Microphone



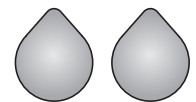
Microphone  
Sponges



Speakers



Speaker Pads



Hook and Loop  
Fasteners for  
Speakers



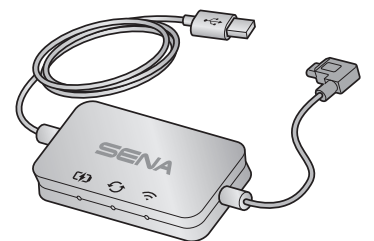
Boom Microphone  
Holder



Hook and Loop  
Fastener for Holder



USB Power &  
Data Cable  
(USB-C)



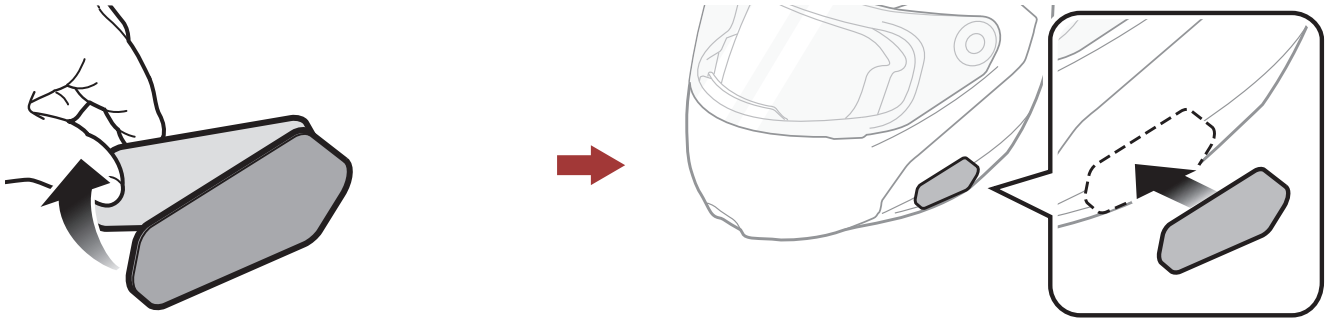
WiFi Adapter

## 2. INSTALLING THE HEADSET ON YOUR HELMET

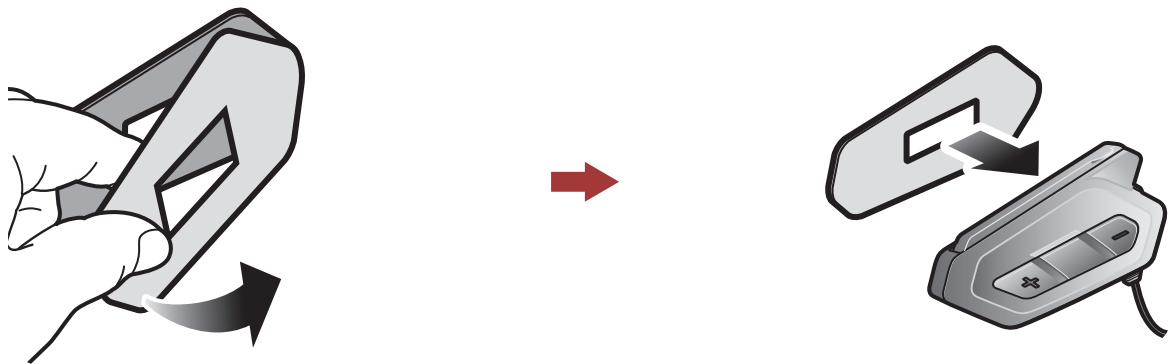
### 2.1 Installing the Main Unit

#### 2.1.1 Using the Hook and Loop Fasteners for Main Unit

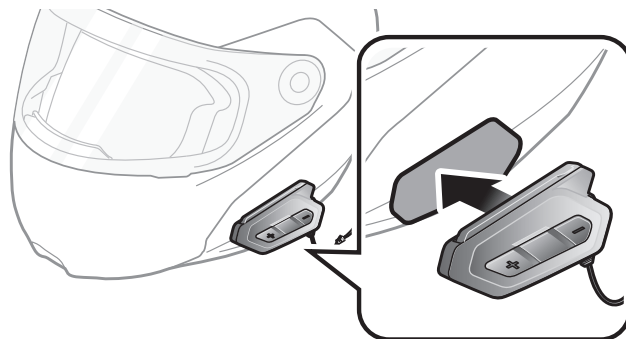
1. Clean the area on the left side of the helmet where you will attach the hook and loop fasteners for main unit with a moistened towel and dry thoroughly.
2. Peel off the cover of the adhesive tape of the loop fastener for main unit and attach it to the helmet.



3. Peel off the cover of the adhesive tape of the hook fastener for main unit and attach it to the back plate of the main unit.



4. Attach the main unit using the hook and loop fasteners that you fitted. Make sure that the main unit is firmly attached to the helmet.



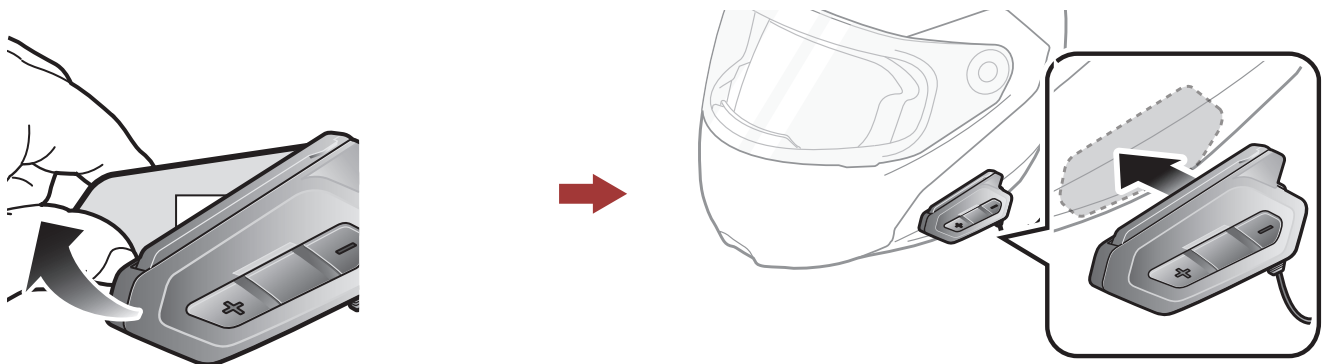
### 2.1.2 Using the Double Sided Adhesive Tapes for Main Unit

If you cannot attach the hook and loop fasteners to the helmet, you can use double sided adhesive tape.

1. Clean the area on the left side of the helmet where you will attach the double sided adhesive tapes with moistened towel and dry thoroughly.
2. Peel off the cover from one side of the double sided adhesive tapes for main unit and attach it to the back plate of the main unit.



3. Peel off the cover from the other side of the double sided adhesive tapes and attach the main unit on the left side of your helmet.



4. Make sure that the main unit sticks on the helmet firmly. Maximum adhesion occurs after 24 hours.

**⚠ Caution:** Sena recommends using the hook and loop fasteners for main unit. The double sided adhesive tape is provided for convenience, but is not the recommended mounting method. Sena is not responsible for its use.

### 2.1.3 Using the Clamp for Main Unit

1. Clean the area on the back plate of clamp where you will attach the double sided adhesive tapes with moistened towel and dry thoroughly.

2. Peel off the cover from one side of the double sided adhesive tapes for main unit and attach it to the back plate of the main unit.

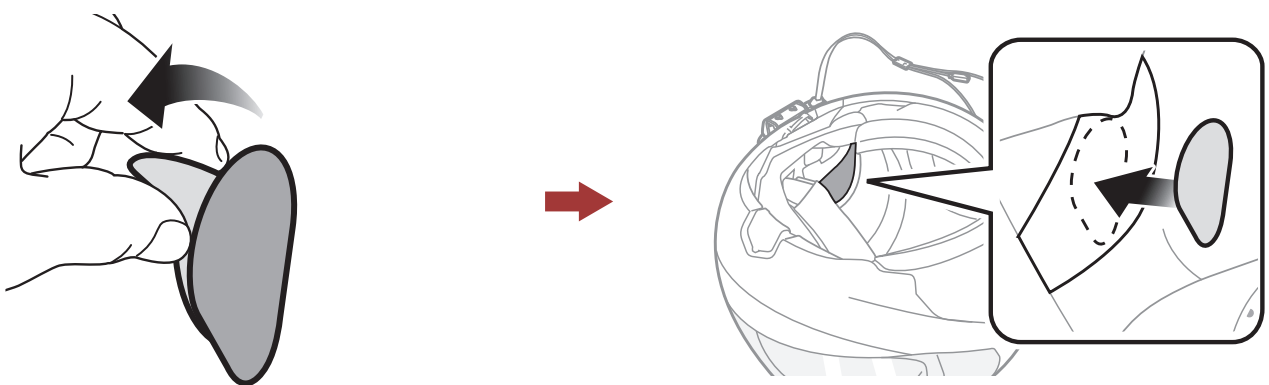


3. Insert the back plate of the clamp between the internal padding and external shell on the left side of the helmet.

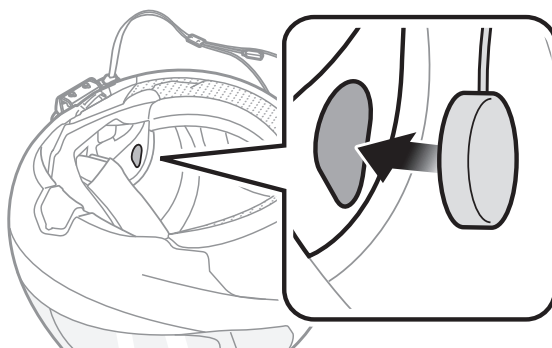


## 2.2 Installing the Speakers

1. Peel off each cover of the hook and loop fasteners for speakers to expose the adhesive surface. Then, attach the fasteners to the ear pockets inside the helmet.

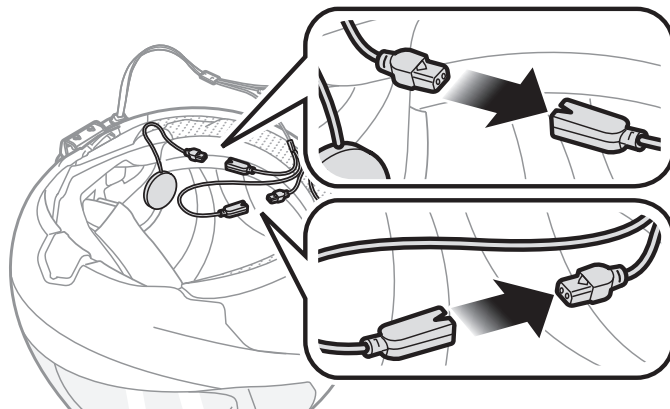


2. Attach the speakers to the hook and loop fasteners for speakers inside the helmet.





3. Align the arrows on the main unit and speaker cables and insert speaker cables into each speaker connector.



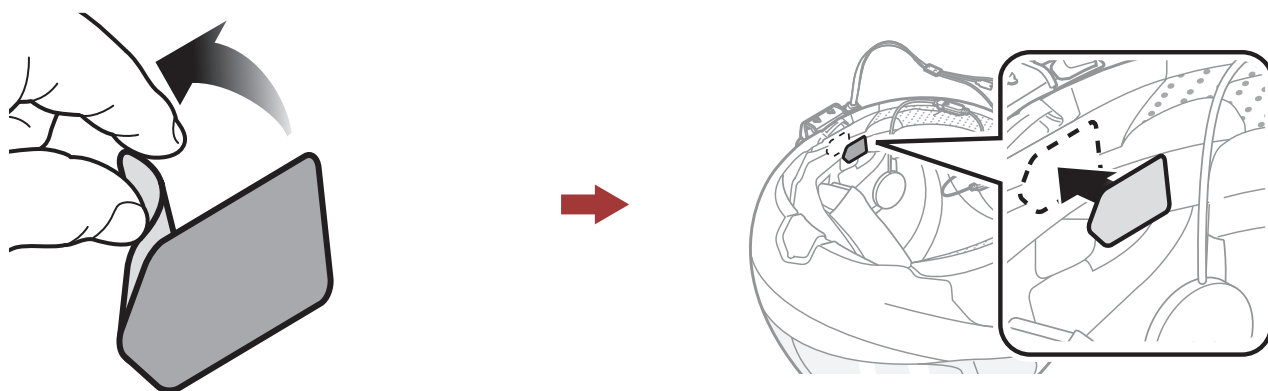
**Note:**

- The cable for the speakers has two leads. The longer lead is for the right speaker and the shorter lead is for the left speaker.
- If the helmet has deep ear pockets, you can use the speaker pads to bring the speakers closer to your ears.

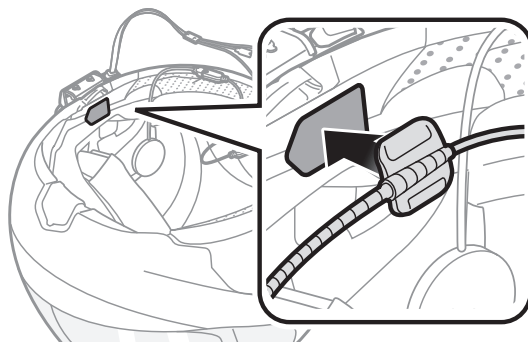
## 2.3 Installing the Microphones

### 2.3.1 Using the Wired Boom Microphone

1. Peel off the cover of the hook and loop fastener for wired boom microphone to expose the adhesive tape. Then, attach the hook and loop fastener on the inside surface of the left external shell.



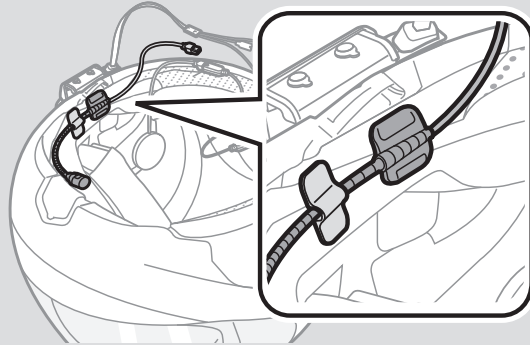
2. Attach the wired boom microphone's mounting plate to the hook and loop fastener.



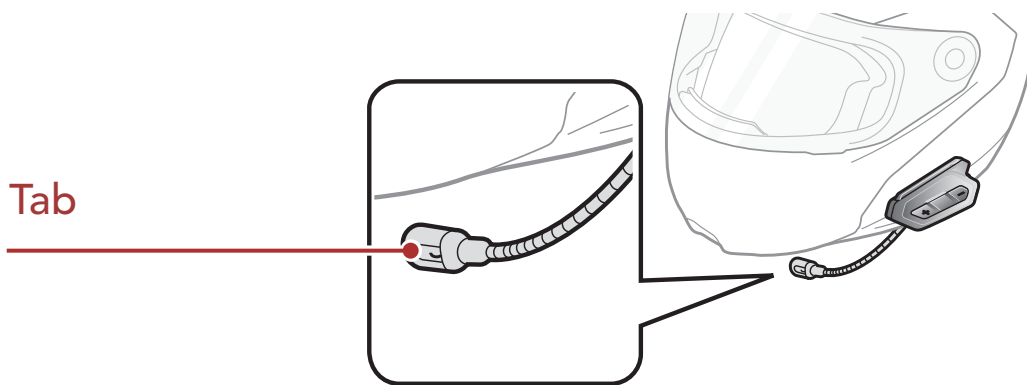


### Note:

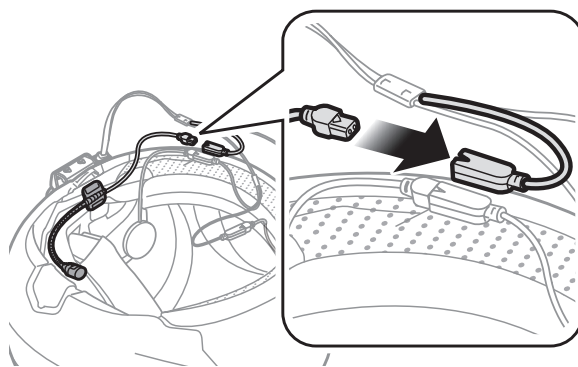
- After you install the wired boom microphone, make sure you reinstall the helmet's internal padding.
- You can use the boom microphone holder after attaching the hook and loop fastener for boom microphone holder on it to ensure secure installation.



3. Make sure that the microphone's receiver is located near your mouth.
4. Adjust the head of the microphone so that the tab is facing away from your mouth.



5. Align the arrows on the main unit and microphone cables and insert the microphone cable into the microphone connector.

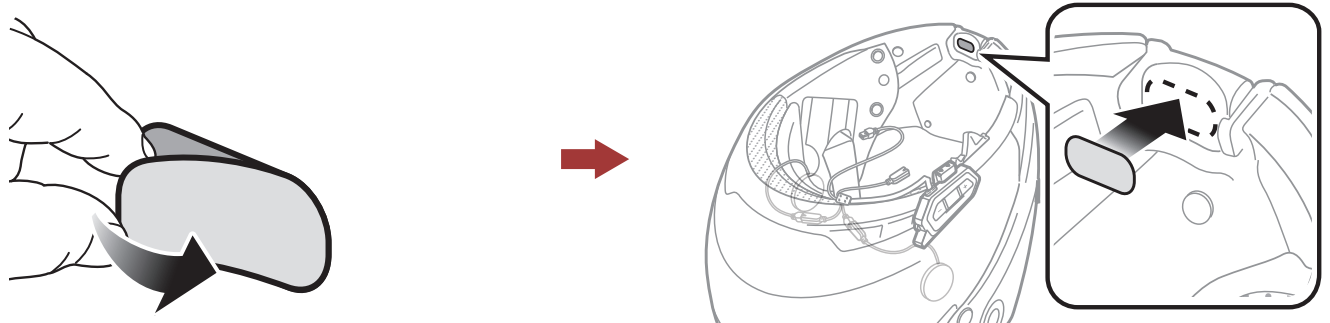


**Note:** The shortest cable is for the microphone.

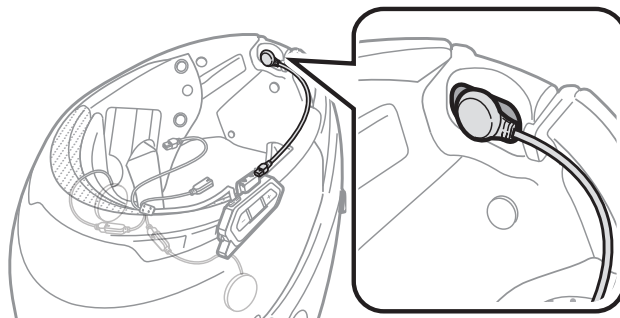
### 2.3.2 Using the Wired Microphone

If you have a full face helmet, you can use the wired microphone.

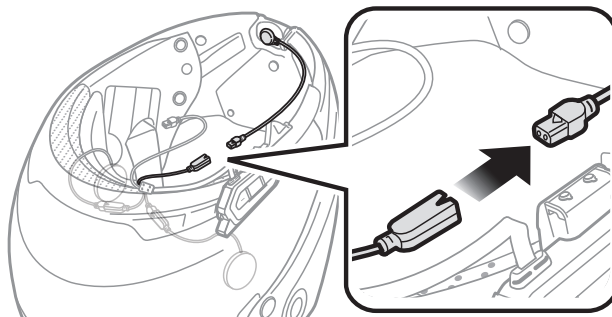
1. Peel off the cover of the hook and loop fastener for wired microphone to expose the adhesive tape. Then, attach the hook and loop fastener on the inside of the helmet's chin guard.



2. Attach the wired microphone to the hook and loop fastener for wired microphone.



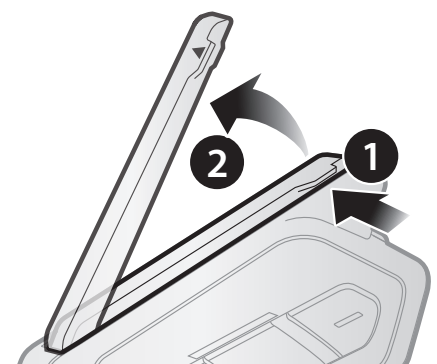
3. Align the arrows on the main unit and microphone cables and insert the microphone cable into the microphone connector.



**Note:** The shortest cable is for the microphone.

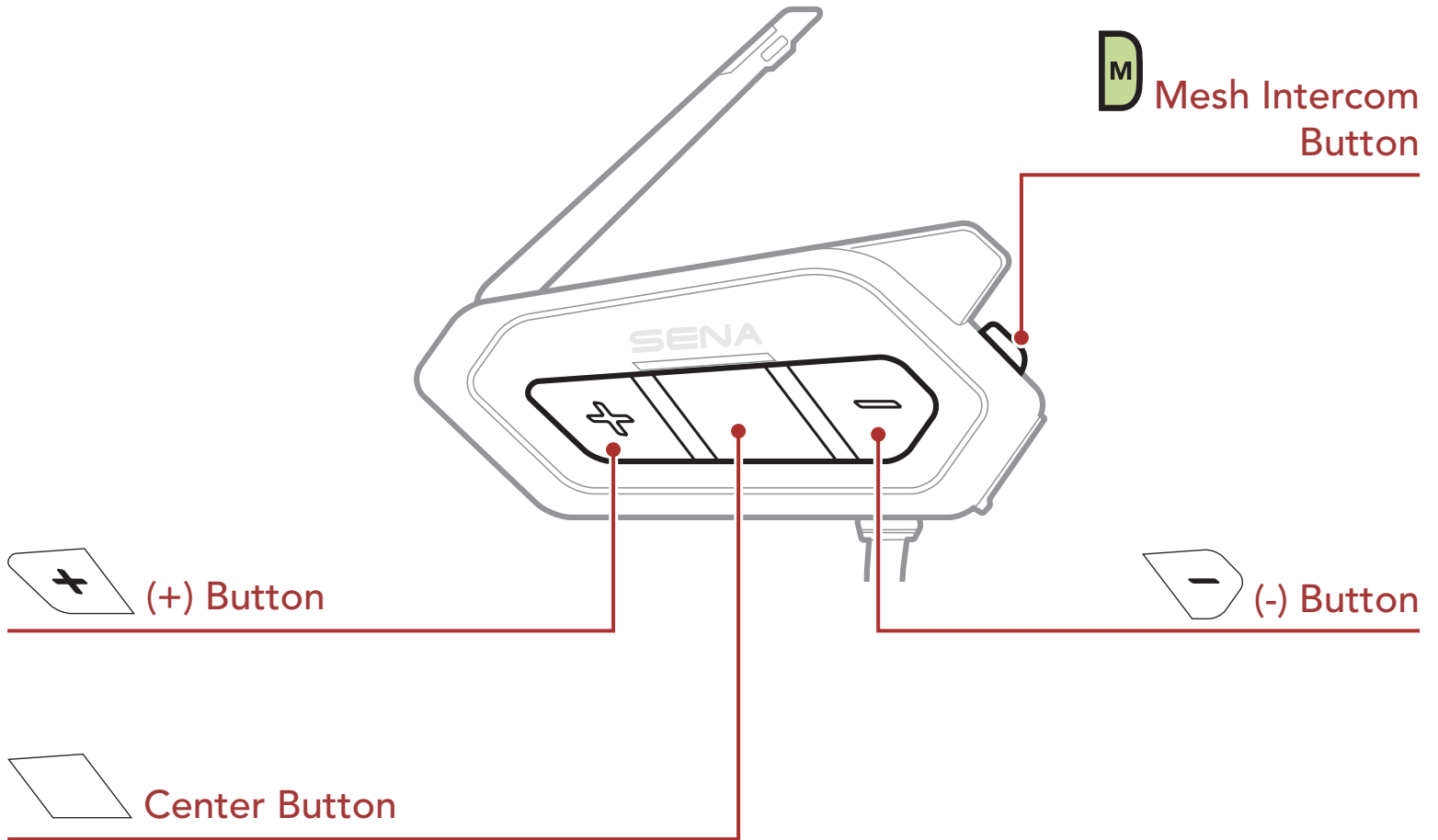
## 2.4 External Mesh Intercom Antenna

Pull the Mesh Intercom Antenna inwards slightly to unfold it.



# 3. GETTING STARTED

## 3.1 Button



## 3.2 Downloadable Sena Software

### 3.2.1 Sena 50 Utility App

By simply pairing your phone with your headset, you can use the **Sena 50 Utility App** for quicker and easier set up and management.

- App Features: Mesh Intercom, Bluetooth Intercom, Music, Device settings, Quick Start Guide, and User's Guide.

- Download

- Android: Google Play Store > '**Sena 50 Utility**'

- iOS: App Store > '**Sena 50 Utility**'



### 3.2.2 Sena Device Manager

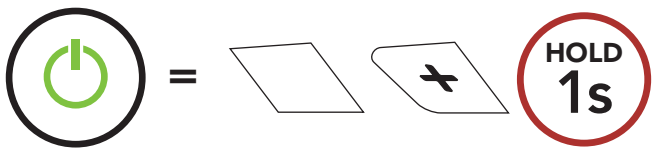
The **Sena Device Manager** allows you to upgrade the firmware and configure its settings directly from your PC or Apple computer. Download the **Sena Device Manager** from [sena.com](http://sena.com).

[Click Here to Visit sena.com](http://sena.com)

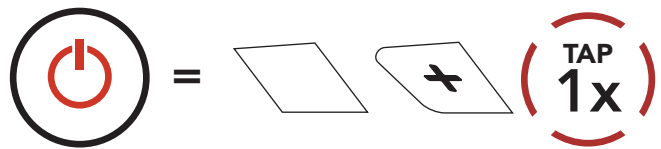
### 3.3 Powering On and Off

Press and hold the **Center Button** and **(+) Button** for **1 second** at the same time to turn the headset on or off.

#### Powering On

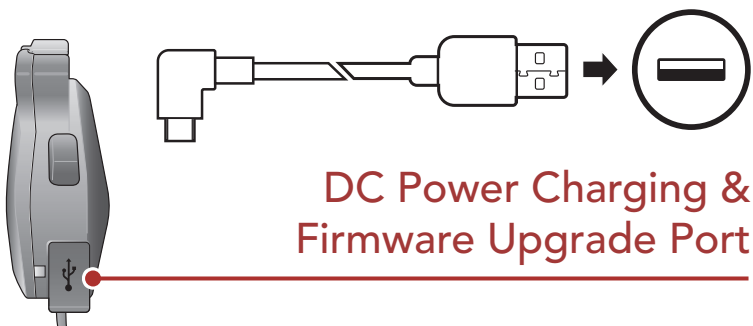


#### Powering Off



### 3.4 Charging

#### Charging the Headset



The headset will be fully charged in about 1 hour. (The charging time may vary depending on the charging method.)

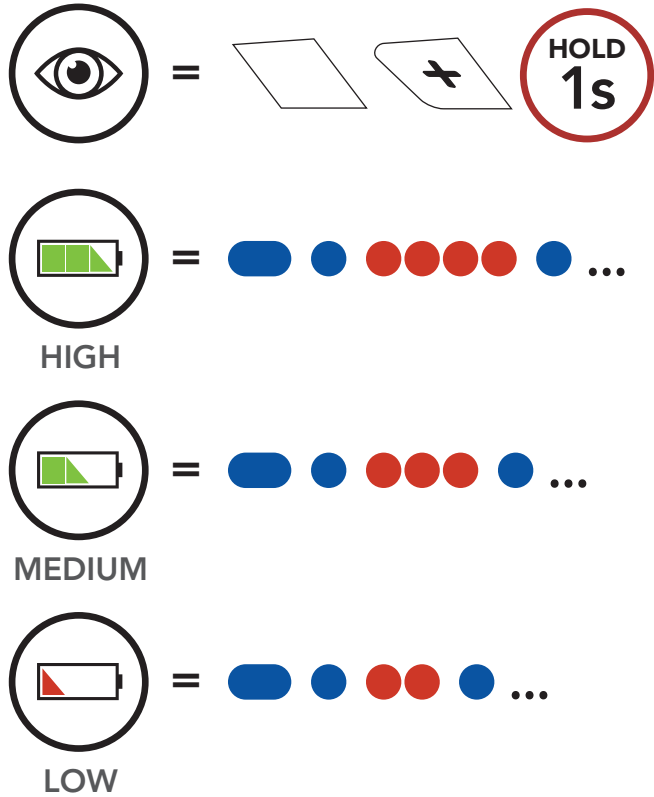
#### Note:

- The headset includes a **Fast Charging** feature which allows it to charge quickly over a short period of time. For example, a user can get up to 3.5 hours of Mesh communication or 6 hours of Bluetooth intercom after charging the headset for 20 minutes.
- Any 3rd party USB charger can be used with Sena products if the charger is approved by either the FCC, CE, IC or other locally approved agencies that Sena accepts.
- The **50R** is compatible with 5 V input USB-charged devices only.

### 3.5 Checking the Battery Level

Instructions are for when powering the headset on.

#### Visual Method

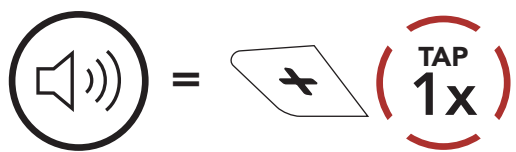


**Note:** When the battery is low while in use, you will hear a voice prompt saying "Low battery".

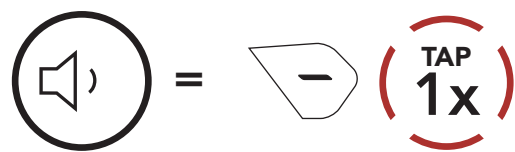
### 3.6 Volume Adjustment

You can raise or lower the volume by tapping the **(+) Button** or the **(-) Button**. Volume is set and maintained independently at different levels for each audio source (i.e., phone, intercom), even when the headset is rebooted.

#### Volume Up



#### Volume Down

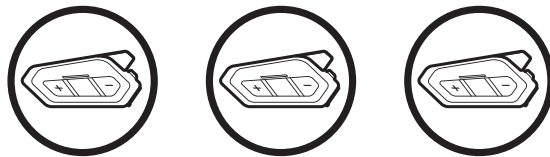


# 4. PAIRING THE HEADSET WITH OTHER BLUETOOTH DEVICES

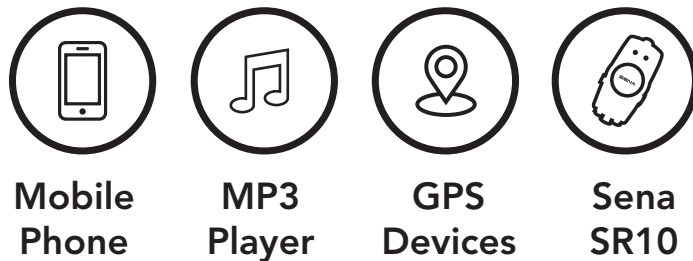
When using the headset with other Bluetooth devices for the first time, they will need to be “paired.” This enables them to recognize and communicate with one another whenever they are within range.

The headset can pair with multiple Bluetooth devices such as a mobile phone, GPS, MP3 player or Sena SR10 Two-Way Radio Adapter via **Mobile Phone Pairing, Second Mobile Phone Pairing and GPS Pairing**. The headset can also be paired with up to three other Sena headsets.

## Pairs with up to Three Sena Headsets



## Also Pairs with:



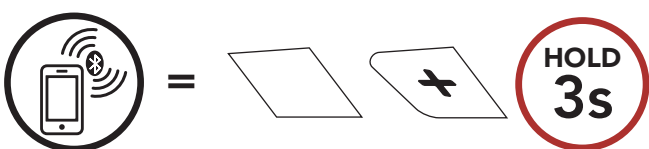
## 4.1 Phone Pairing

There are two ways to pair the phone.

### 4.1.1 Pairing When the 50R is Turned Off

1. Press and hold the **Center Button** and **(+) Button** for **3 seconds** when the **50R** is turned off.

#### Phone Pairing

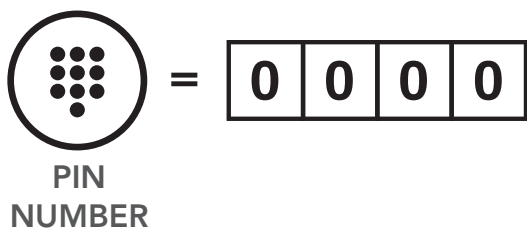


“Phone Pairing”



= Alternating blue and red flashing lights indicate **device is now discoverable**.

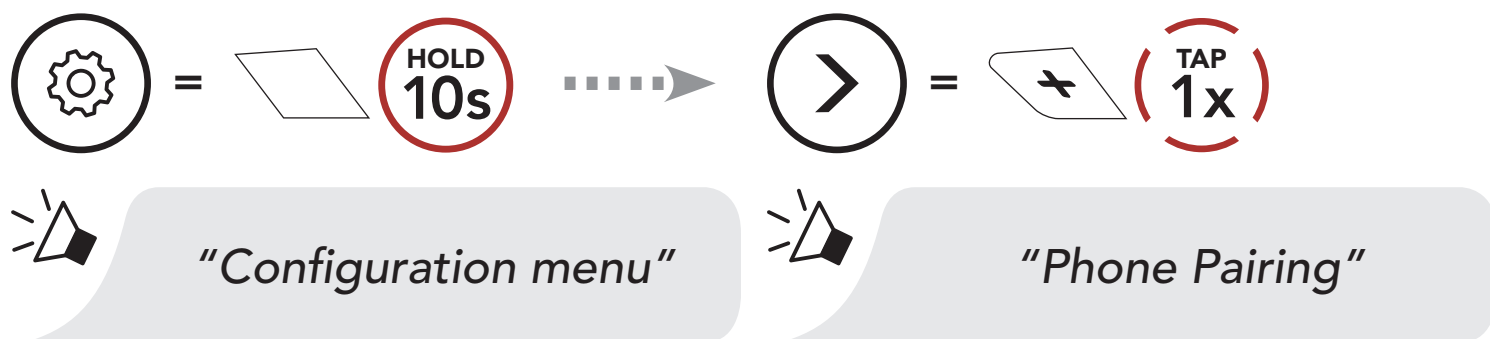
2. With your mobile phone in Bluetooth-pairing mode, select **Sena 50R** in the list of devices detected.
3. If your mobile phone asks for a PIN, enter 0000.



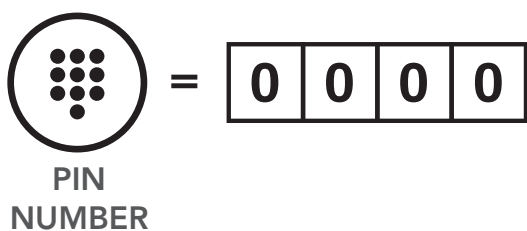
### 4.1.2 Pairing When the 50R is Turned On

1. Execute **Phone Pairing** in the **Configuration Menu**.

#### Phone Pairing



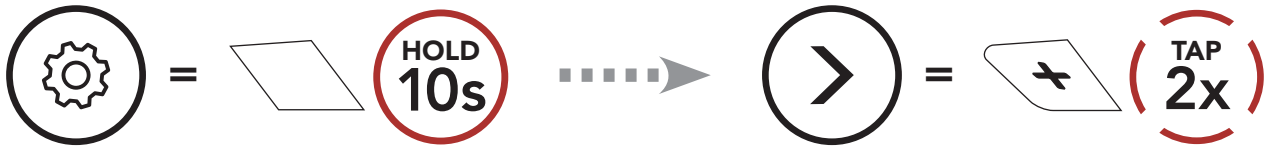
2. With your mobile phone in Bluetooth-pairing mode, select **Sena 50R** in the list of devices detected.
3. If your mobile phone asks for a PIN, enter 0000.



## 4.2 Second Mobile Phone Pairing - Second Mobile Phone, GPS, and SR10

1. Execute **Second Mobile Phone Pairing** in the **Configuration Menu**.

### Second Mobile Phone Pairing



"Configuration menu"

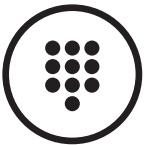


"Second mobile phone pairing"



= Blue flashing light indicates **device is now discoverable**.

2. With your mobile phone in Bluetooth-pairing mode, select **Sena 50R** in the list of devices detected.
3. If your mobile phone asks for a PIN, enter 0000.



= 0 0 0 0

PIN NUMBER

## 4.3 Advanced Selective Pairing: Hands-Free or A2DP Stereo

**Phone Pairing** allows the headset to establish two Bluetooth profiles: **Hands-Free** or **A2DP Stereo**. **Advanced Selective Pairing** allows the headset to separate the profiles to enable connection with two devices.



### 4.3.1 Phone Selective Pairing - Hands-Free Profile

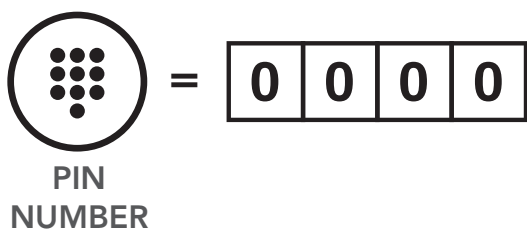
1. Execute **Phone Selective Pairing** in the **Configuration Menu**.

#### Phone Selective Pairing



 = Blue flashing light indicates **device is now discoverable**.

2. With your mobile phone in Bluetooth-pairing mode, select **Sena 50R** in the list of devices detected.
3. If your mobile phone asks for a PIN, enter 0000.



### 4.3.2 Media Selective Pairing - A2DP Profile

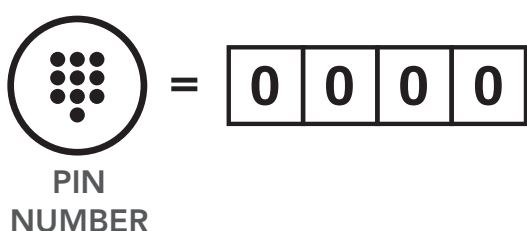
1. Execute **Media Selective Pairing** in the **Configuration Menu**.

#### Media Selective Pairing



 = Red flashing light indicates **device is now discoverable**.

2. With your mobile phone in Bluetooth-pairing mode, select **Sena 50R** in the list of devices detected.
3. If your mobile phone asks for a PIN, enter 0000.



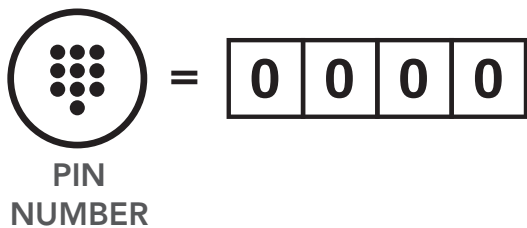
## 4.4 GPS Pairing

1. Execute **GPS Pairing** in the **Configuration Menu**.

### GPS Pairing



2. With your Bluetooth device on the GPS navigation screen, select **Sena 50R** in the list of devices detected.
3. If your Bluetooth device asks for a PIN, enter 0000.

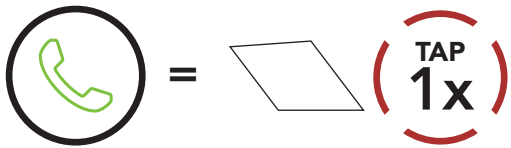


**Note:** If you pair your GPS device via GPS Pairing, its instruction will not interrupt your Mesh Intercom conversations, but overlay with them. Bluetooth intercom conversations will be interrupted by GPS instructions.

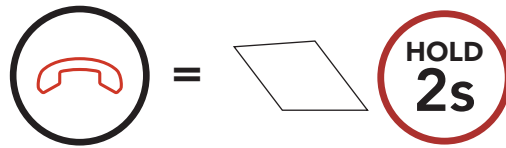
# 5. MOBILE PHONE USAGE

## 5.1 Making and Answering Calls

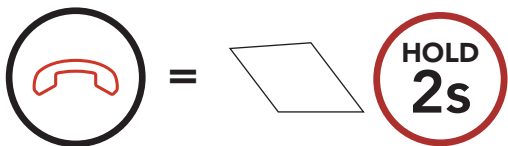
### Answer a Call



### End a Call



### Reject a Call



**Note:** If you have a GPS device connected, you will not hear its voice navigations during a phone call.

## 5.2 Siri and Google Assistant

The **50R** supports the **Siri** and **Google Assistant** access directly.

You can activate the **Siri** or **Google Assistant** using the voice through the headset's microphone, a wake word will be used. This is a word or groups of words such as **"Hey Siri"** or **"Hey Google"**.

### Activate the Siri or Google Assistant Installed on Your Smartphone



## 5.3 Speed Dialing

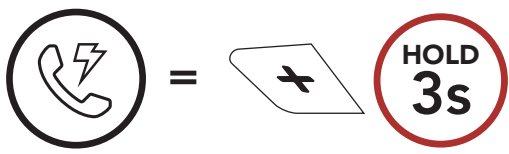
### 5.3.1 Assigning Speed Dial Presets

**Speed Dial Presets could be assigned** in the settings menu, accessible through **Sena Device Manager** or **Sena 50 Utility App**.

### 5.3.2 Using Speed Dial Presets

1. Enter into the **Speed Dial** menu.

#### Enter Speed Dial Mode



*"Speed dial"*

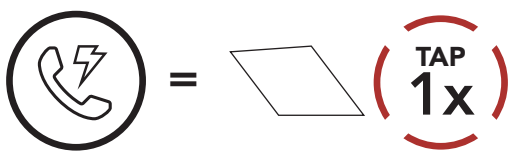
2. Navigate between the **Speed Dial Preset**.

#### Navigate Forward or Backward through Speed Dial Preset Numbers



3. Call one of your **Speed Dial Presets**.

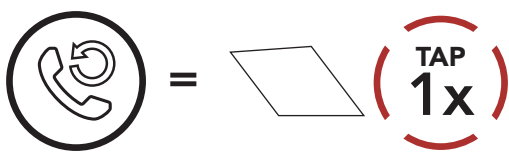
#### Call a Speed Dial Preset Number



*"Speed dial (#)"*

4. Redial the last number called.

#### Redial Last Number



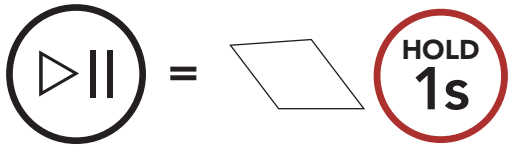
*"Last number redial"*

# 6. STEREO MUSIC

## 6.1 Playing Music with Bluetooth Devices

1. Play or pause music.

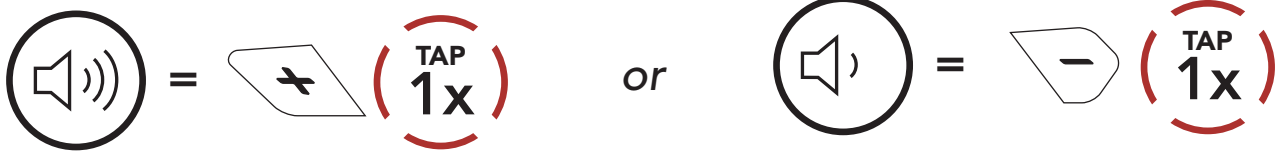
### Play/Pause Music



“[Beep, Beep]”

2. Adjust the volume.

### Volume Up/Down



3. Track forward or back.

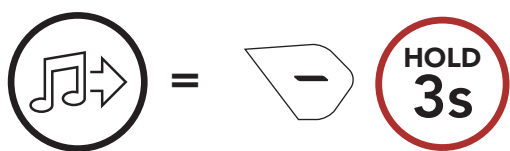
### Track Forward/Backward




## 6.2 Music Sharing

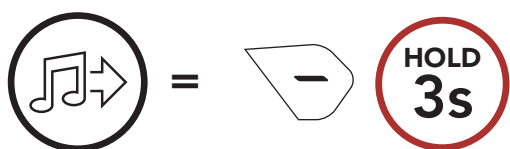
You can start sharing music with one intercom friend using Bluetooth stereo music during a two-way intercom conversation and one participant of a Mesh. Both you and your intercom friend can remotely control music playback such as track forward and track back. If you start sharing music while Bluetooth intercom and Mesh Intercom are running at the same time, then music shared during Bluetooth intercom will take priority over music shared during Mesh Intercom. The Creator will send a request message to a headset connected during Mesh Intercom and will share music with the first participant that accepts the request.


### Bluetooth Intercom Music Sharing




 "Music sharing on"

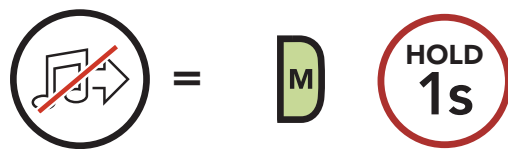
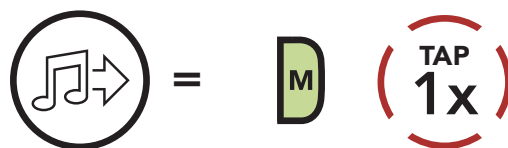
### Mesh Intercom Music Sharing [Creator]



 "Music sharing on"

### [Participant]

 "Would you like to accept music sharing?"



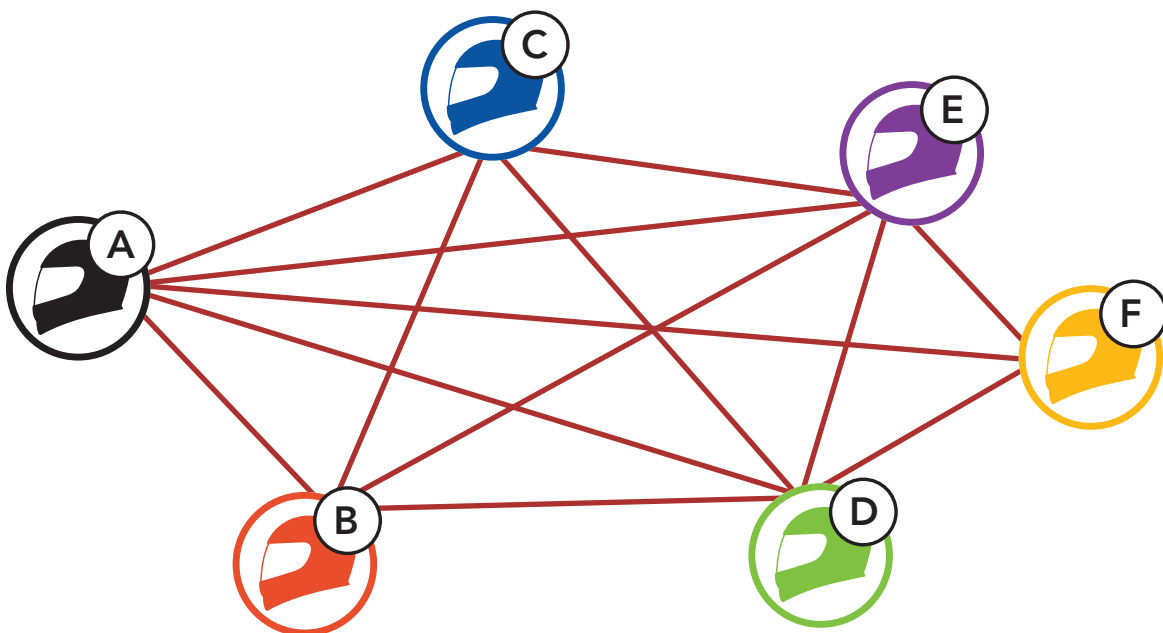
# 7. MESH INTERCOM

## 7.1 What is Mesh Intercom?

**Mesh Intercom™** is a dynamic communication system created by Sena that provides instant and effortless bike-to-bike communication without a pre-grouping process. **Mesh Intercom** allows riders to connect and communicate with nearby users without the need to pair each headset together.

The working distance between each **50R** in **Mesh Intercom** can be up to 2 km (1.2 miles) in open terrain. In open terrain, the **Mesh** can be extended up to 8 km (5 miles) between a minimum of six users. Within the same channel in **Open Mesh™** or the same private group in **Group Mesh™**, six users can talk at the same time and enjoy the optimal quality for their conversation.

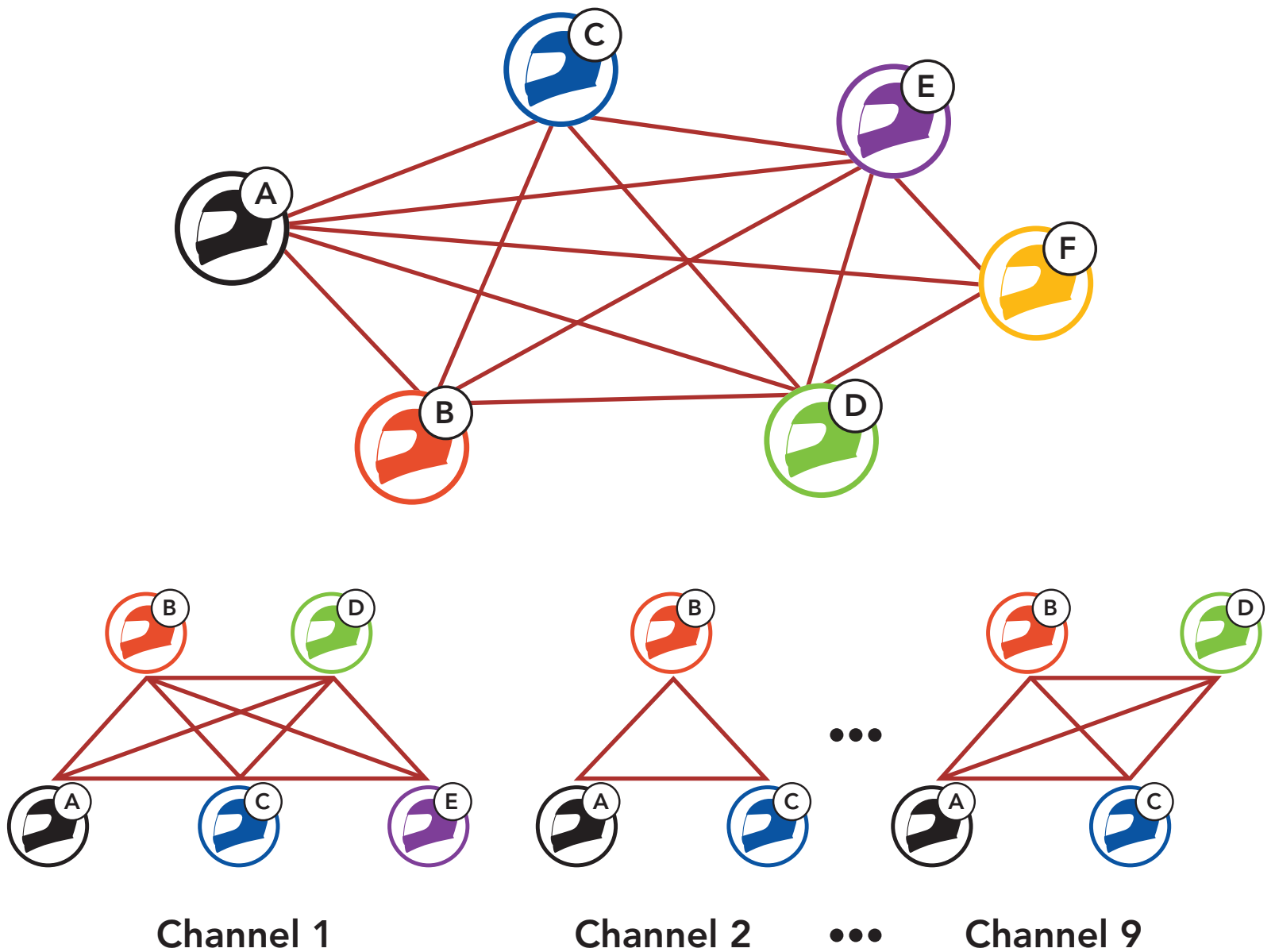
### Mesh Intercom



## 7.1.1 Open Mesh

**Open Mesh** is an open group intercom function. Users can freely communicate with each other in the same **Open Mesh** channel and select which channel (1-9) to use through the headset.

It can connect with a virtually unlimited number of users in each channel.

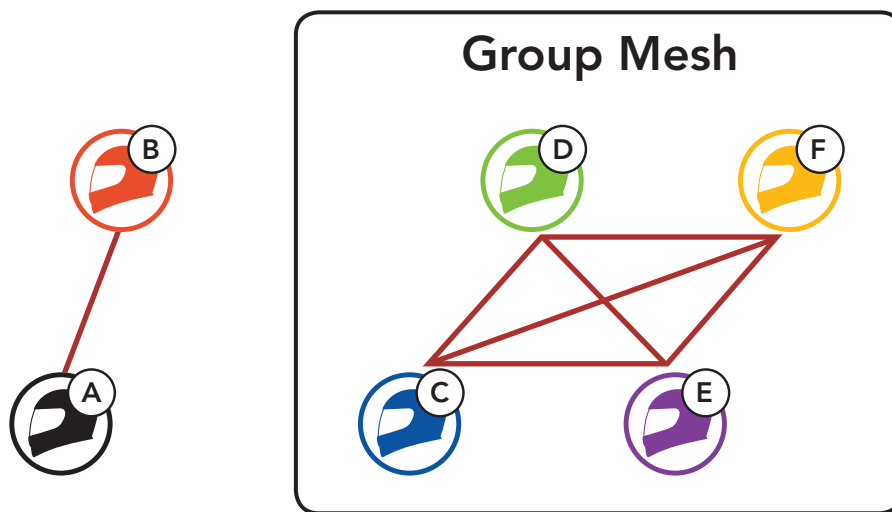




## 7.1.2 Group Mesh

**Group Mesh** is a closed group intercom function that allows users to join, leave, or rejoin a group intercom conversation without pairing each headset. Users can freely communicate with each other in the same private group in **Group Mesh**.

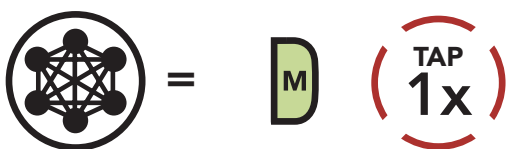
For closed intercom conversations using **Mesh Intercom**, a **Group Mesh** needs to be created by the users. When users create a private group in **Group Mesh** by **Mesh Grouping**, the headset automatically switches from **Open Mesh** to **Group Mesh**. Up to 24 users can all be connected in each private group.



## 7.2 Starting Mesh Intercom

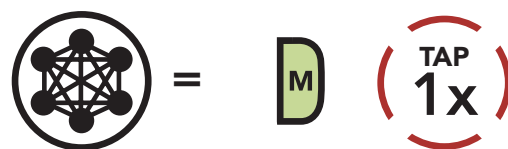
When **Mesh Intercom** is enabled, the **50R** will automatically connect to nearby **50R** users and allow them to talk to each other by pressing the **Mesh Intercom Button**.

### Mesh Intercom On



"Mesh intercom on"

### Mesh Intercom Off



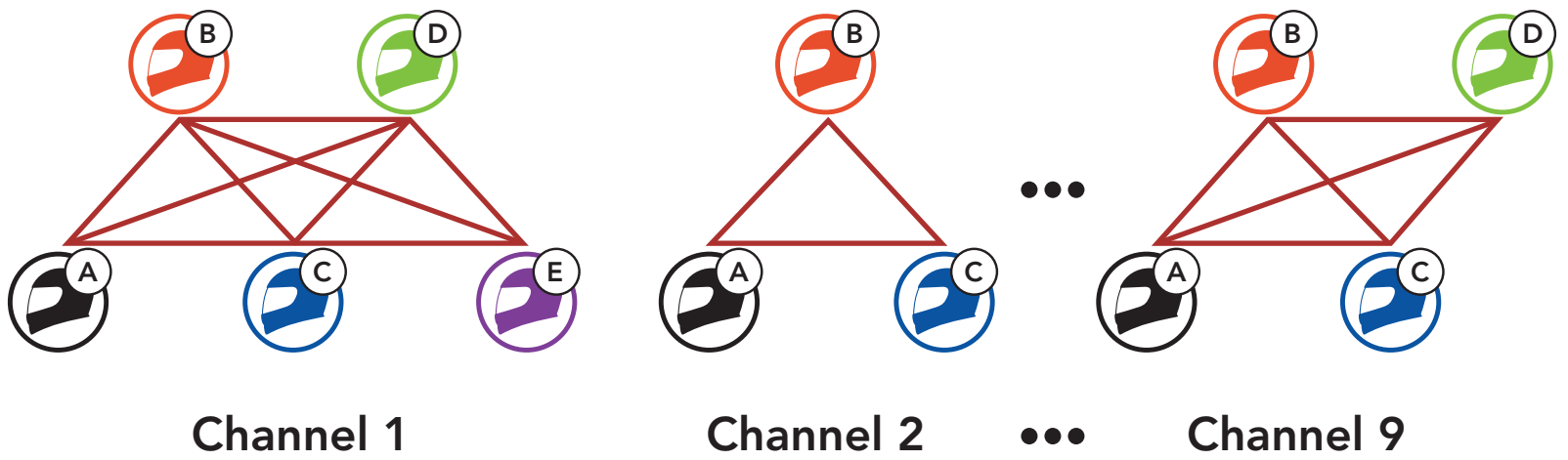
"Mesh intercom off"

## 7.3 Using the Mesh in Open Mesh

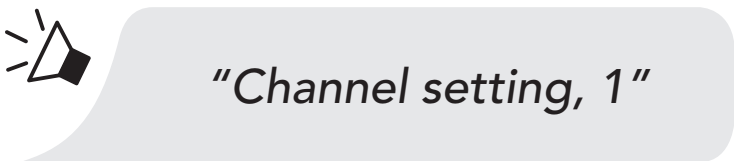
When **Mesh Intercom** is enabled, the headset will be in **Open Mesh** (default: channel 1) initially.

### 7.3.1 Channel Setting (Default: channel 1)

If the **Open Mesh** communication experiences interference because other groups are also using **channel 1 (default)**, change the channel. You can select from channels 1 to 9.

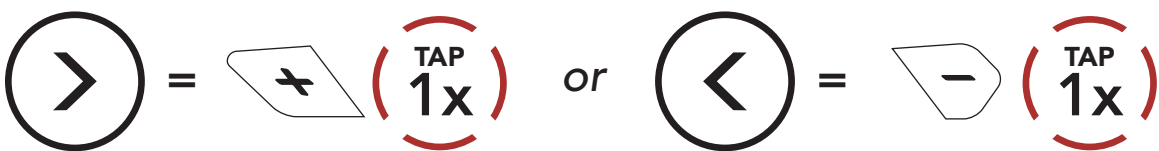


#### Enter into the Channel Setting

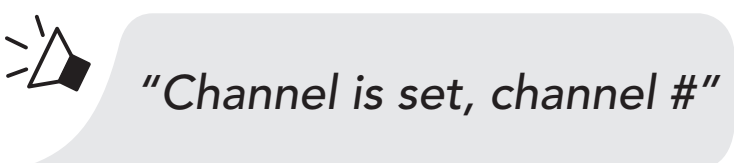
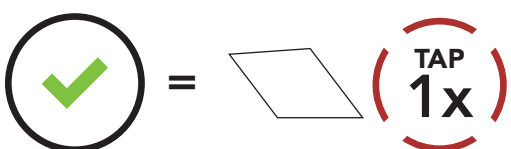


#### Navigate Between Channels

(1 → 2 → ... → 8 → 9 → Exit → 1 → ...)



#### Save the Channel



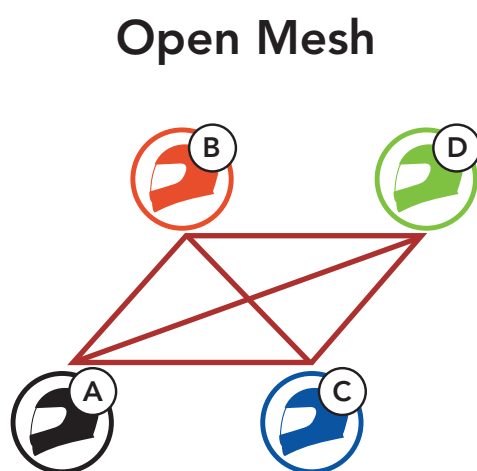
**Note:**

- **Channel Setting** always starts with channel 1.
- If you do not press any button for approximately **10 seconds** in a specific channel, the channel is automatically saved.
- The channel will be remembered even if you turn off the **50R**.

## 7.4 Using Mesh in Group Mesh

### 7.4.1 Creating a Group Mesh

Creating a **Group Mesh** requires **two or more Open Mesh users**.



1. Enter into **Mesh Grouping** to create a **Group Mesh**.



YOU

and =



FRIEND



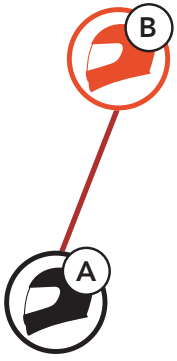
"Mesh Grouping"

2. The headsets complete **Mesh Grouping** and automatically switch from **Open Mesh** to **Group Mesh**.

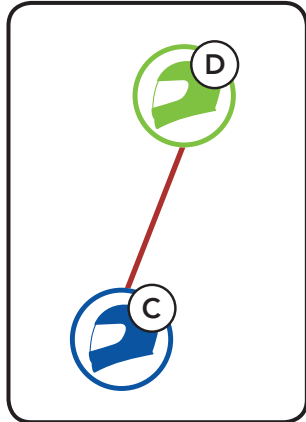


*"Group Mesh"*

**Open Mesh**



**Group Mesh**



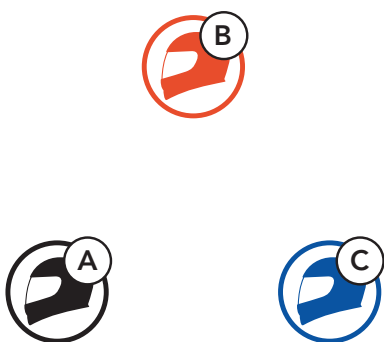
**Note:**

- If the **Mesh Grouping** is not completed within **30 seconds**, users will hear a voice prompt, **"Grouping failed"**.
- If you want to cancel during the **Mesh Grouping**, tap the **Mesh Intercom Button**.

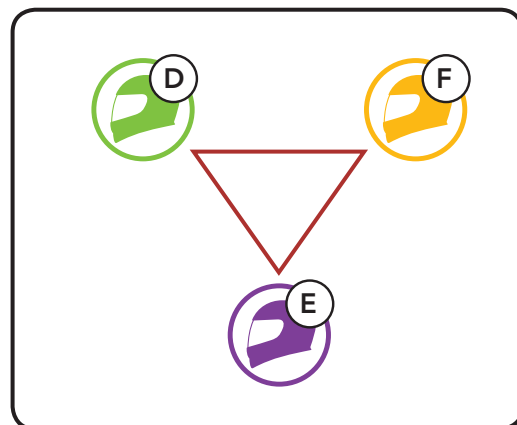
### 7.4.2 Joining an Existing Group Mesh

One of the members in an **Existing Group Mesh** can allow new members in **Open Mesh** to join the **Existing Group Mesh**.

**New Members**



**Existing Group Mesh and Current Members**



1. **One of the current members** and a **new member** enter into **Mesh Grouping** to join the **Existing Group Mesh**.



YOU  
(NEW  
MEMBER)

and =



CURRENT  
MEMBER  
IN GROUP  
MESH

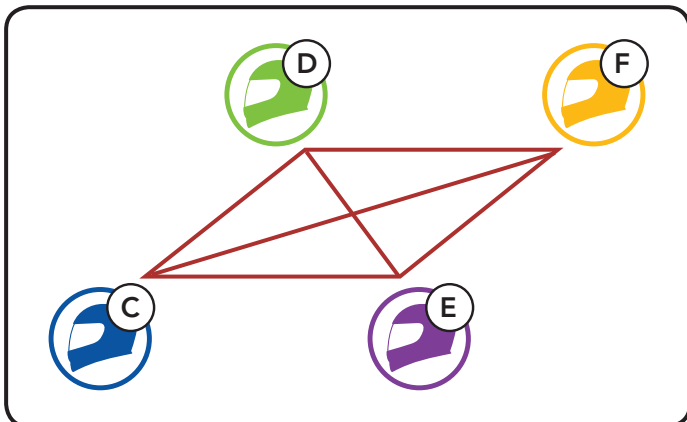


*"Mesh Grouping"*

2. The headsets complete **Mesh Grouping**. The new members will hear a voice prompt as their headsets automatically switch from **Open Mesh** to **Group Mesh**.



*"Group Mesh"*



**Note:** If the **Mesh Grouping** is not completed within **30 seconds**, the current members will hear a low tone double beep and the new member will hear a voice prompt, **"Grouping failed"**.

## 7.5 Reset Mesh

If a headset in an **Open Mesh** or **Group Mesh** resets the **Mesh**, it will automatically return to **Open Mesh (default: channel 1)**.

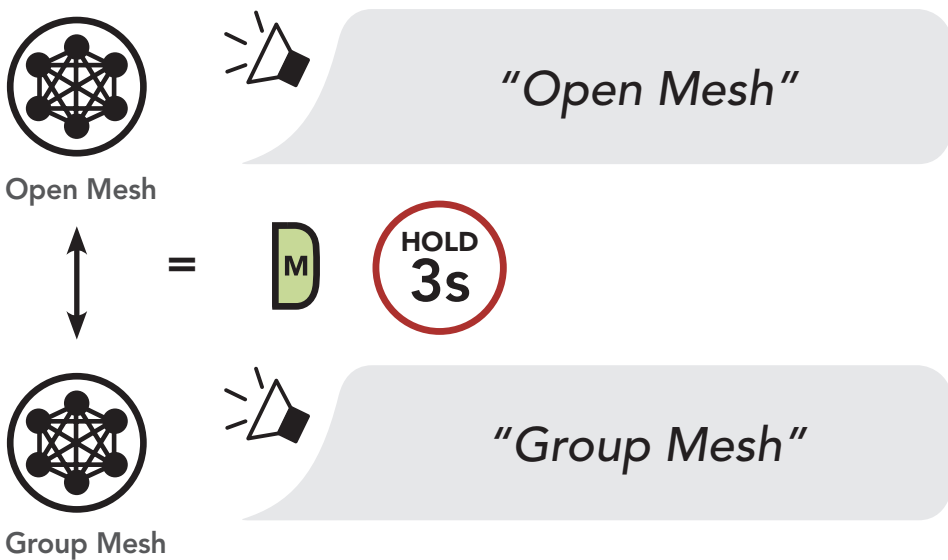


## 7.6 Toggling Open Mesh/Group Mesh

Users are able to toggle between **Open Mesh** and **Group Mesh** without resetting the **Mesh**. This allows users to keep the **Group Mesh Network** connection information while in **Open Mesh**.

Users can toggle to **Group Mesh** to communicate with participants from the stored **Group Mesh Network** connection information.

### Toggle Between Open Mesh and Group Mesh

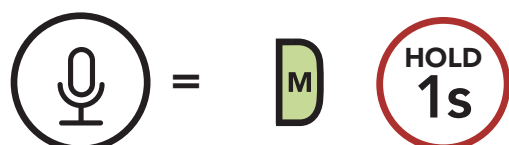


**Note:** If you have never participated in **Group Mesh**, you cannot toggle between **Open Mesh** and **Group Mesh**. You will hear a voice prompt, **"No Group Available"**.

## 7.7 Enable/Disable Mic (Default: Enable)

Users can enable/disable the microphone when communicating in a **Mesh Intercom**.

### Enable/Disable the Microphone

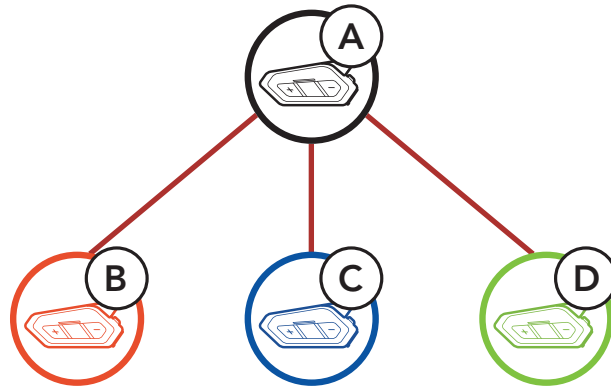


# 8. BLUETOOTH INTERCOM

## 8.1 Intercom Pairing

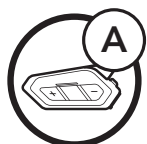
Up to three people can communicate via intercom with the headset simply by pairing their headsets.

### Pairing with Intercom Friends



1. Press and hold the **Center Buttons** of two headsets for **5 seconds** until you hear a voice prompt, **"Intercom pairing"**.

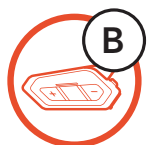
### Pairing Headset A with Headset B



YOU

and

=



"Intercom pairing"



= Red flashing light indicates **device is now discoverable**.



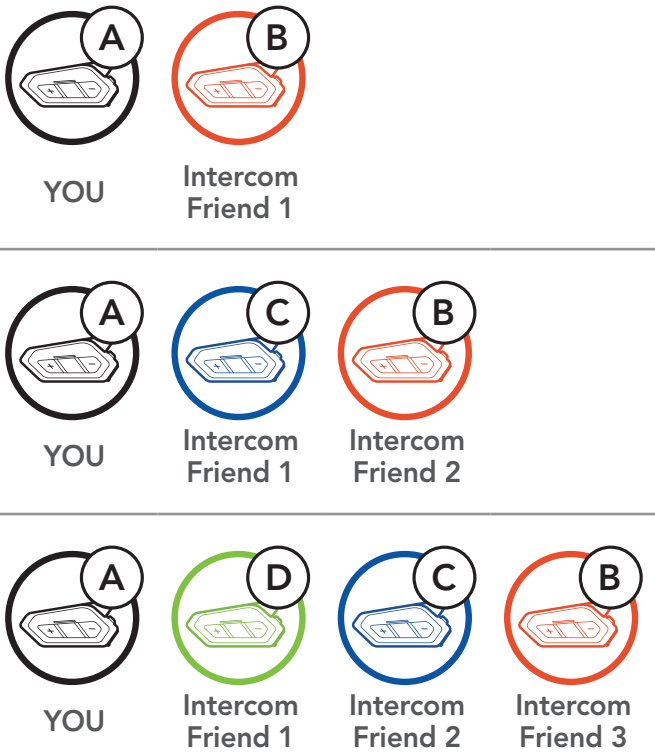
The **50R** will automatically pair with a Sena headset.



= Flashing blue LED confirms **intercoms are paired**.

2. Repeat step 1 to pair with **Intercom Friends C & D**.

**Last-Come, First-Served**

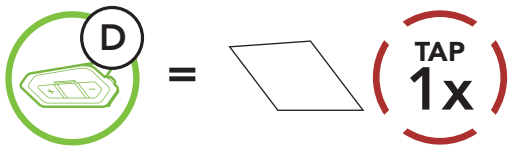


## 8.2 Two-Way Intercom

You can start or end an intercom conversation with an Intercom Friend by tapping the **Center Button**.

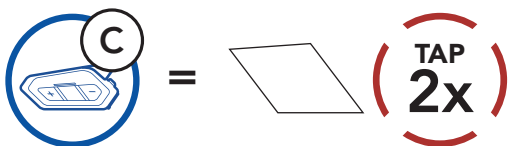
1. Tap once for Intercom **Friend 1**.

**Start/End with Intercom Friend 1**



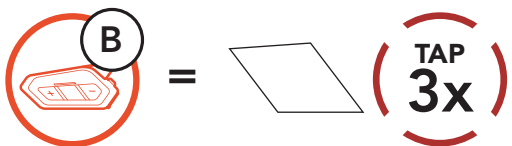
2. Tap twice for Intercom **Friend 2**.

**Start/End with Intercom Friend 2**



3. Tap three times for Intercom **Friend 3**.

**Start/End with Intercom Friend 3**





## 8.3 Multi-Way Intercom

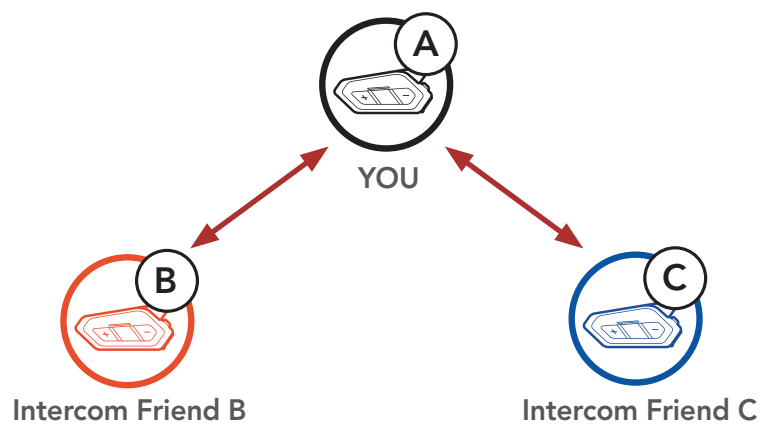
**Multi-Way Intercom** enables conference-call-style conversations with up to three **Intercom Friends** at the same time. While **Multi-Way Intercom** is in progress, mobile phone connection is temporarily disconnected. However, as soon as **Multi-Way Intercom** terminates, the mobile phone connection will be reestablished.

### 8.3.1 Starting a Three-Way Intercom Conference

**You (A)** can have a **Three-Way Intercom Conference** with two other **Intercom Friends (B & C)** by establishing two intercom connections simultaneously.

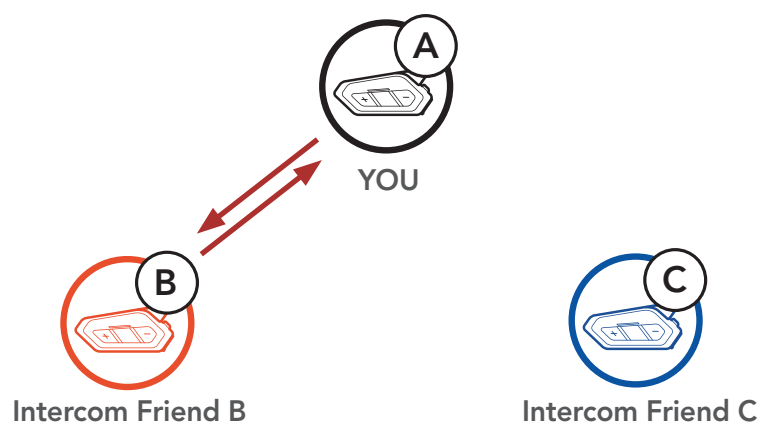
1. Pair your headset (A) with those of two other **Intercom Friends (B & C)**.

#### Pair with Intercom Friends B & C



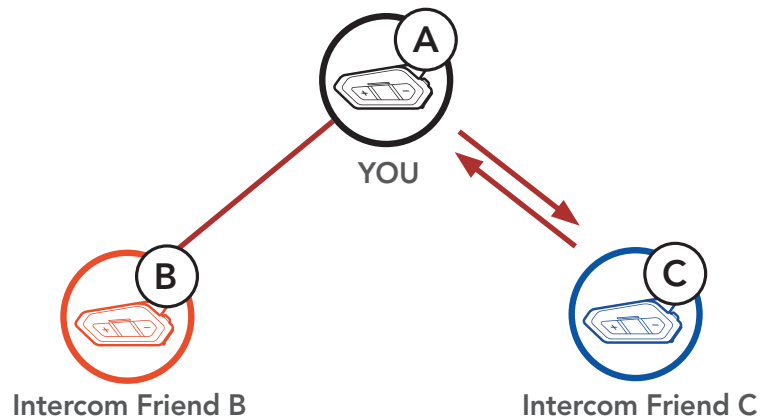
2. Start an intercom conversation with one of the two friends in your intercom group. For example, **you (A)** may start an intercom conversation with the **Intercom Friend (B)**. Or, **Intercom Friend (B)** may start an intercom call with **you (A)**.

#### Starting an Intercom Conversation with Intercom Friend B



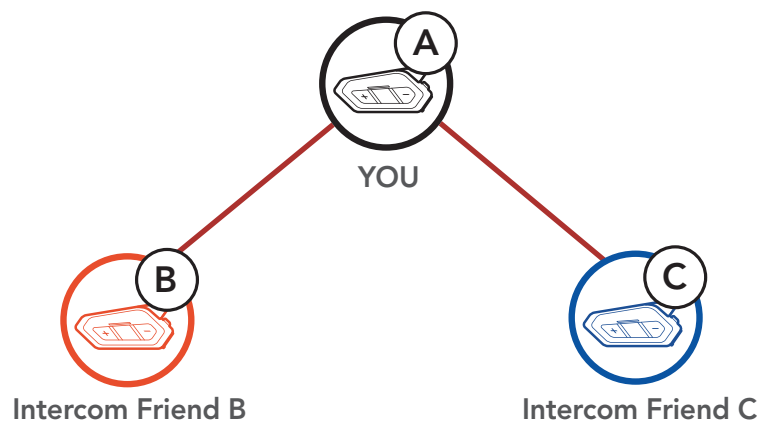
3. Then, **you (A)** can call the second **Intercom Friend (C)**, or the second **Intercom Friend (C)** may join the intercom by making an intercom call to **you (A)**.

### Starting an Intercom Conversation with Intercom Friend C



4. Now **you (A)** and two **Intercom Friends (B & C)** are having a **Three-Way Intercom Conference**.

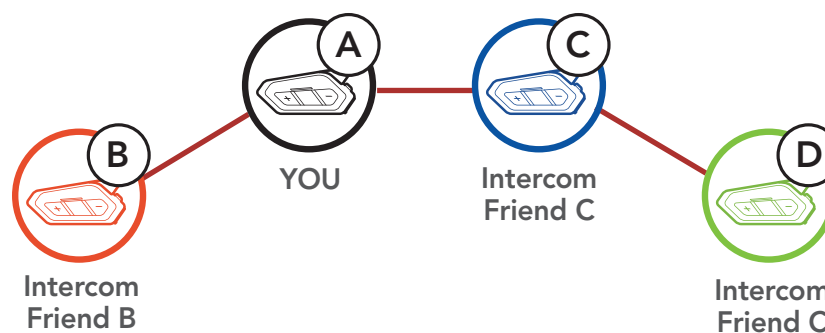
### Three-Way Intercom



## 8.3.2 Starting a Four-Way Intercom Conference

With three **Intercom Friends** connected, a new participant (**D**) can make it a **Four-Way Intercom Conference** by making an intercom call to either (**B**) or (**C**).

### Starting a Four-Way Intercom



### 8.3.3 Ending Multi-Way Intercom

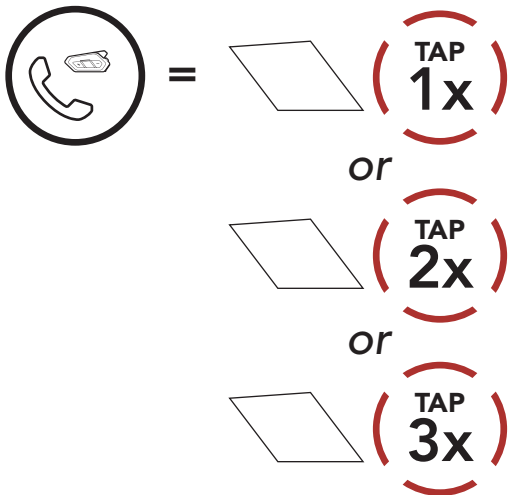
1. Press and hold the **Center Button** for **3 seconds** until you hear a beep to terminate all intercom connections.
2. Tap the **Center Button** to disconnect from your first **Intercom Friend**. Double tap the **Center Button** to disconnect from your second **Intercom Friend**.

## 8.4 Three-Way Conference Phone Call with Intercom Users

You can have a **Three-Way Conference Phone Call** by adding an **Intercom Friend** to the mobile phone conversation.

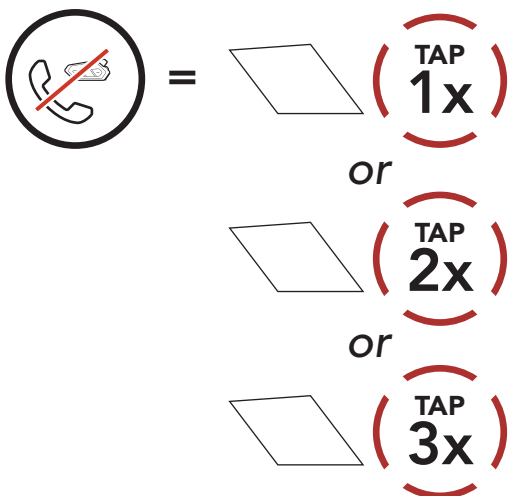
1. During a mobile phone call, tap the **Center Button once, twice or, three times** to invite one of your **Intercom Friends** to the conversation.

### Invite an Intercom Friend into Phone Conference



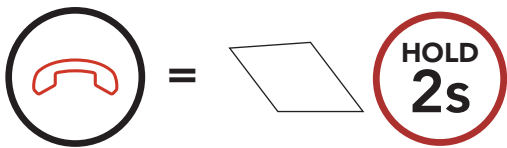
2. To disconnect the intercom during a conference phone call, tap the **Center Button once, twice or three times**.

### Disconnect Intercom Friend from Conference



- To disconnect the mobile phone call during a conference phone call, press and hold the **Center Button** for **2 seconds**.

### End Phone Call from Conference



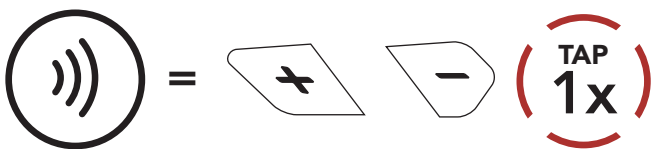
**Note:** When you have an incoming intercom call during a mobile phone call, you will hear high tone double beeps.

## 8.5 Group Intercom

**Group Intercom** allows you to instantly create a **Multi-Way Conference Intercom** with three of the most recently paired headsets.

- Go through intercom pairing with up to three headsets you want to have **Group Intercom** with.
- Tap the **(+) Button** and **(-) Button** to begin **Group Intercom**. The LED will flash green and you will hear a voice prompt, **"Group intercom"**.

### Start Group Intercom



*"Group intercom"*

- When all of the headsets are connected together, everyone will hear a voice prompt, **"Group intercom connected"**.

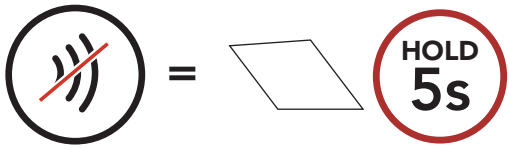


*"Group intercom connected"*



4. To terminate **Group Intercom**, press and hold the **Center Button** for **5 seconds** during **Group Intercom**. You will hear a voice prompt, "**Group intercom terminated**".

### End Group Intercom



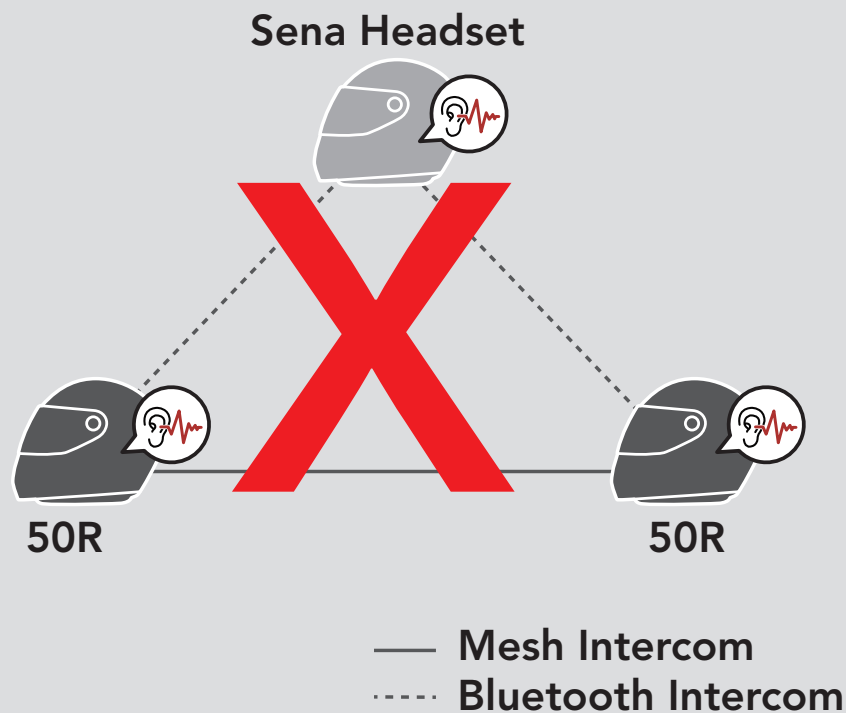
*"Group intercom terminated"*

## 8.6 Mesh Intercom Conference with Bluetooth Intercom Participant

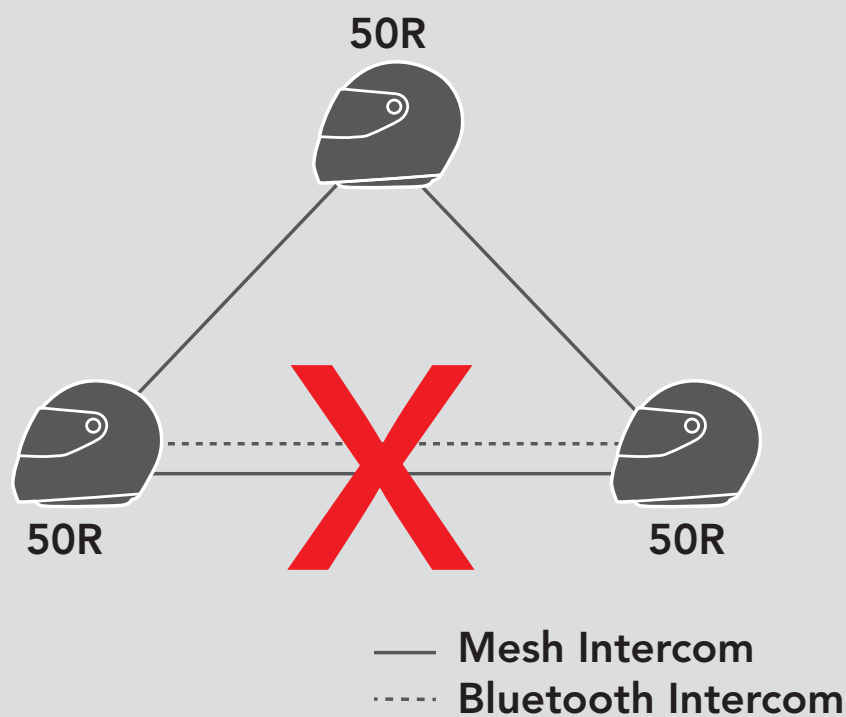
Users can use the existing Bluetooth intercom and **Mesh Intercom** function at the same time. In this case, it is recommended to communicate with other Sena headsets via Bluetooth intercom connection and use **Mesh Intercom** between **50R** headsets. A user who is in **Open Mesh** or **Group Mesh** when using Mesh Intercom is able to include up to 3 of their Bluetooth intercom friends. You can start a Two-Way Intercom conversation with one of your three Intercom Friends to include them in the Mesh.

**Note:**

- The audio quality will be reduced if a **50R** connects to 2 or more Bluetooth intercom friends while in **Open Mesh** or **Group Mesh** when using **Mesh Intercom**.
- If a closed loop is created, as shown below, each user will experience severe noise issues. Sena recommends that a closed loop not be created.



- If **Bluetooth intercom** is accidentally turned on during **Mesh Intercom** communication between **50R** headsets, as shown below, you will hear a voice prompt, "**Mesh intercom disabled, Bluetooth intercom connected**" every **1 minute**. If you turn off the **Bluetooth Intercom** or turn off the **Mesh Intercom**, the voice prompt will no longer come out.

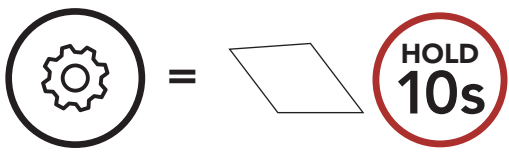


## 8.7 Universal Intercom

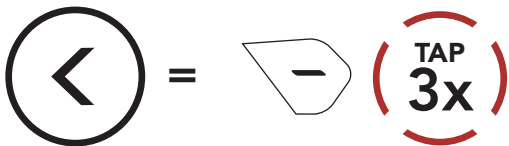
**Universal Intercom** allows you to have intercom conversations with users of non-Sena Bluetooth headsets. You can pair your headset with only one non-Sena headset at a time. The intercom distance depends on the performance of the Bluetooth headset to which it is connected. When a non-Sena Bluetooth headset is paired with the Sena headset, if another Bluetooth device is paired via **Second Mobile Phone Pairing**, it will be disconnected.

1. Execute **Universal Intercom** in the **Headset Configuration Menu**.

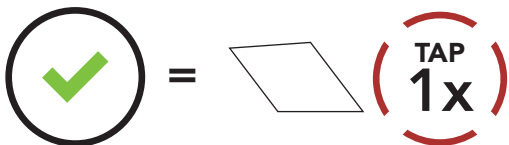
### Access Universal Intercom in the Configuration Menu



*"Configuration menu"*

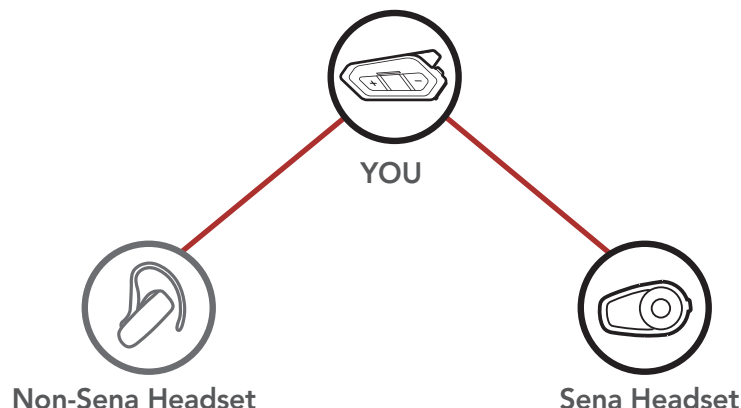


*"Universal intercom pairing"*

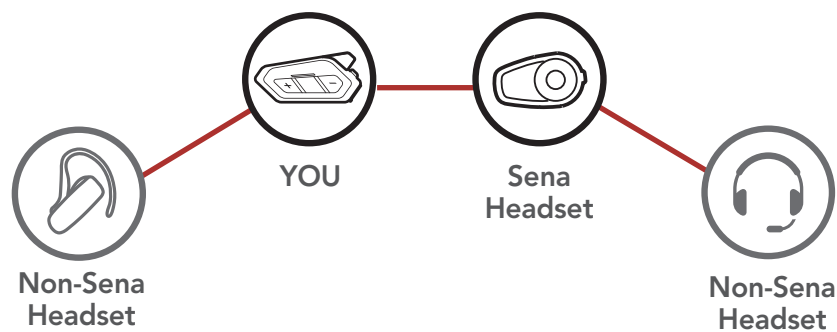


2. Put the non-Sena Bluetooth headset in Pairing Mode. The headset will automatically pair with a non-Sena Bluetooth headset.
3. You can have **Two-Way Intercom** or **Multi-Way Intercom** communication with up to three **Intercom Friends** using non-Sena headsets by following the procedures described below.

### Example of a Three-Way Universal Intercom



### Example of a Four-Way Universal Intercom



**Note:** Some non-Sena headsets may not support Multi-Way Universal Intercom.

## 8.8 Mesh Intercom Conference with Two-way Universal Intercom Participant

Users can use the existing **Two-way Universal Intercom** and **Mesh Intercom** function at the same time. In this case, it is recommended to communicate with **non-Sena headset** via **Two-way Universal Intercom** connection and use **Mesh Intercom** between **50R** headsets.

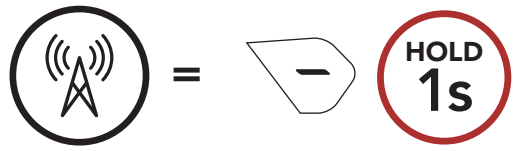
A user who is in **Open Mesh** or **Group Mesh** when using **Mesh Intercom** is able to include one **Universal Intercom friend**. You can start a **Two-way Universal Intercom** conversation with your **Universal Intercom Friend** to include it in the **Mesh**.



# 9. USING THE FM RADIO

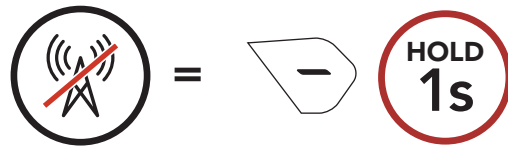
## 9.1 FM Radio On/Off

### FM Radio On



"FM on"

### FM Radio Off



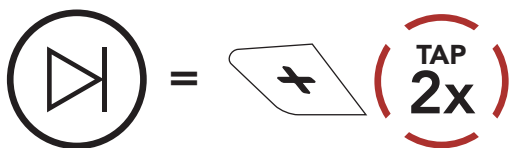
"FM off"

## 9.2 Seek and Save Radio Stations

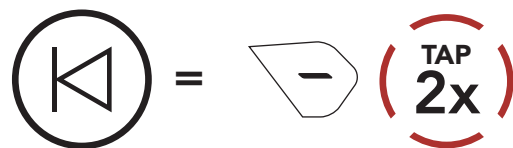
The **"Seek"** feature searches for radio stations.

1. Search for radio stations.

### Seek Stations Forward

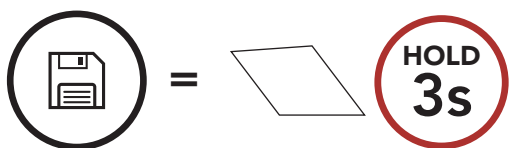


### Seek Stations Backward



2. Save the current station.

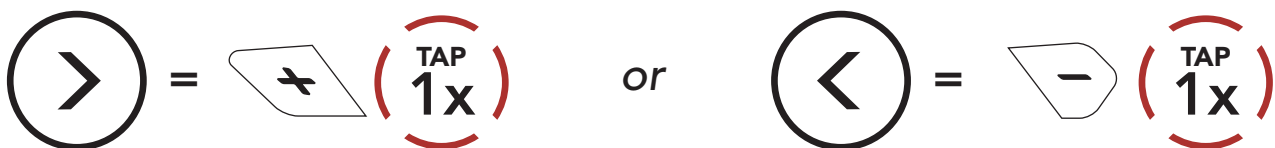
### Enter Preset Selection Mode



"Preset (#)"

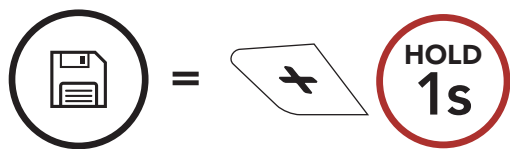
3. Navigate through the preset numbers that you want to store.

### Navigate Forward/Backward Through Preset Stations

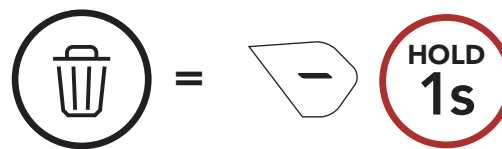


- Save the station in the preset number you choose or delete the station from memory.

**Save Station to the Preset Number**



**Delete Station from Memory**

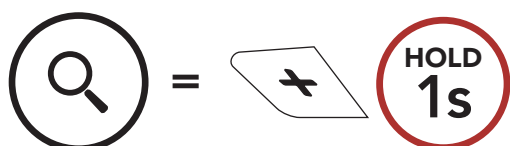


### 9.3 Scan and Save Radio Stations

The **"Scan"** function automatically searches for radio stations, starting with the current station's frequency, then up from there.

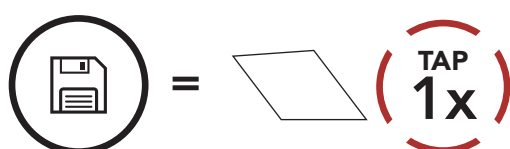
- Scan for stations.

**Start Scanning**



- The Sena tuner pauses at each station it finds for **8 seconds** before moving to the next.
- Save the current station. The station will be saved as the next preset number.

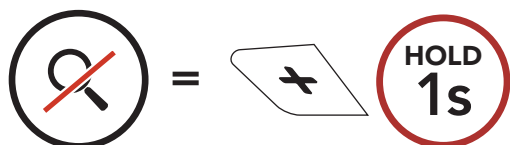
**Save the Current Station**



"Save preset (#)"

- Stop scanning.

**Stop scanning**

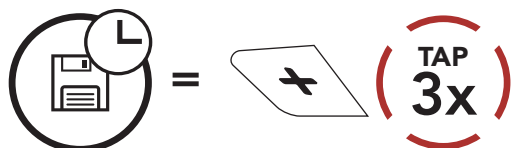


## 9.4 Temporary Station Preset

The **Temporary Preset** feature automatically finds and saves the nearest 10 radio stations without changing your existing preset stations.

1. Automatically find and save 10 stations.

### Temporary Stations

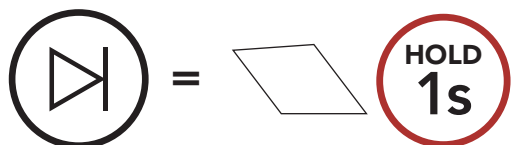


2. The temporary preset stations will be cleared when the headset reboots.

## 9.5 Navigating Preset Stations

Using the methods above, up to 10 radio stations can be stored. You can navigate through the saved stations.

### Navigate through Preset Stations



**Note:** You can use the **Sena Device Manager** or the **Sena 50 Utility App** to save the preset stations.

## 9.6 Region Selection

You can select the proper FM frequency range for your location from the **Sena Device Manager** or the **Sena 50 Utility App**. Using the region setting, you can optimize the seek function to avoid unnecessary frequency ranges.

Region	Frequency range	Step
Worldwide	76.0 ~ 108.0 MHz	± 100 kHz
North America, South America and Australia	87.5 ~ 107.9 MHz	± 200 kHz
Asia and Europe	87.5 ~ 108.0 MHz	± 100 kHz
Japan	76.0 ~ 95.0 MHz	± 100 kHz

# 10. VOICE COMMAND

The **Voice Command** of the headset allows you to operate certain operations by simply using your voice. You can control the headset completely handsfree using the voice recognition. Multi-language Voice Command supports **English, French, German, Spanish, Italian, Chinese, Japanese, and Russian.**

## Speak a Voice Command List

Mode Status	Function	Voice Command
Standby/ Bluetooth Intercom/Mesh Intercom/FM Radio/Music	Check battery	"Hey Sena, Check Battery"
	Volume Up	"Hey Sena, Volume Up"
	Volume Down	"Hey Sena, Volume Down"
	Phone Pairing	"Hey Sena, Phone Pairing"
	Bluetooth Intercom Pairing	"Hey Sena, Pairing Intercom"
	Start/End each Bluetooth Intercom	"Hey Sena, Intercom [one, two, three]"
Standby/ Bluetooth Intercom/FM Radio/Music	Turn on Mesh Intercom	"Hey Sena, Mesh On"
Mesh Intercom	Turn off Mesh Intercom	"Hey Sena, Mesh Off"
	Mesh Grouping	"Hey Sena, Mesh Grouping"
	Switch to Open Mesh	"Hey Sena, Open Mesh"
	Switch to Group Mesh	"Hey Sena, Group Mesh"
	End the Bluetooth intercom and Mesh intercom	"Hey Sena, End intercom"
Standby/ Bluetooth Intercom/Mesh Intercom	Play Music	"Hey Sena, Play Music"
Standby/ Intercom/Mesh Intercom/Music	Turn on FM radio	"Hey Sena, FM Radio On"

Mode Status	Function	Voice Command
Music/FM Radio	<ul style="list-style-type: none"> <li>• FM - Next Preset</li> <li>• Music - Next Track</li> </ul>	"Hey Sena, Next"
	<ul style="list-style-type: none"> <li>• FM - Previous Preset</li> <li>• Music - Previous Track</li> </ul>	"Hey Sena, Previous"
Music	Pause Music	"Hey Sena, Stop Music"
FM Radio	Turn off FM Radio	"Hey Sena, FM Radio Off"
Answer an Incoming Call		"Answer"
Ignore an Incoming Call		"Ignore"

**Note:**

- You can set a language to another language by using the **Unit Language** feature on the **Sena 50 Utility App**.
- If you set a language that does not support voice commands, the voice command will work only with English commands.
- You can see the another language's voice command list on the **Sena 50 Utility App**.
- **Voice command** performance may vary based on the environmental conditions including riding speed, helmet type and ambient noise. To improve the performance, minimize wind noise on the microphone by using a large microphone sponge and closing the visor.

# 11. FUNCTION PRIORITY AND FIRMWARE UPGRADES

## 11.1 Function Priority

The headset prioritizes connected devices in the following order:

- (highest)** Mobile phone
- Voice command mode
- Mesh Intercom/Bluetooth Intercom
- Music sharing via Bluetooth stereo
- FM radio
- Stereo music by audio cable
- (lowest)** Bluetooth stereo music

A lower-priority function gets interrupted by a higher-priority function. For example, stereo music will be interrupted by an **Intercom Conversation**; an **Intercom Conversation** will be interrupted by an incoming mobile phone call.

## 11.2 Firmware Upgrades

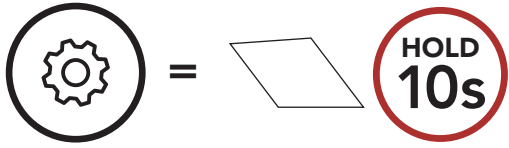
The headset supports firmware upgrades. You can upgrade the firmware using the **Sena Device Manager**. Please visit **sena.com** to check for the latest software downloads.

[Click Here to Visit sena.com](https://www.sena.com)

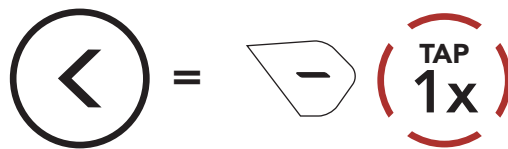
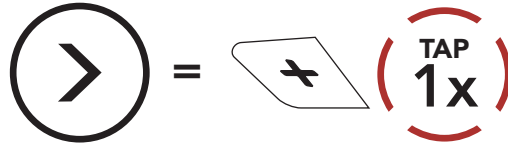
# 12. CONFIGURATION SETTING

## 12.1 Headset Configuration Setting

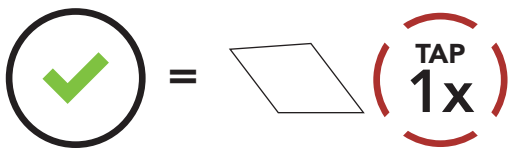
### Access the Configuration Menu



### Navigate Between Menu Options



### Execute Menu Options



### Headset Configuration Menu

Voice Configuration Menu	Tap the Center Button
Phone Pairing	None
Second Mobile Phone Pairing	None
Phone Selective Pairing	None
Media Selective Pairing	None
GPS Pairing	None
Delete All Pairings	Execute
Remote Control Pairing	Execute
Universal Intercom Pairing	Execute
Factory Reset	Execute
Exit	Execute

## 12.1.1 Delete All Pairings

**Delete All Bluetooth Pairing Information** stored in the Bluetooth system.

## 12.1.2 Remote Control Pairing

You can remotely control the headset using **Sena** Remote Control devices (sold separately).

1. Turn on the headset and the Remote Control device.
2. Execute **Remote Control Pairing**.
3. Enter pairing mode in the Remote Control device. The headset will automatically connect with the Remote Control device in pairing mode.

## 12.2 Software Configuration Setting

You can change the settings of the headset through the **Sena Device Manager** or the **Sena 50 Utility App**.

### 12.2.1 Speed Dial

Assign phone numbers for speed dialing to make a phone call quickly.

### 12.2.2 Channel Setting (Default: channel 1)

If the **Open Mesh** communication experiences interference because other groups are also using the **channel 1 (default)**, change the channel. You can select one of 1 to 9 channels.

### 12.2.3 Unit Language

You can select the device language. The selected language is maintained even when the headset is rebooted.



### 12.2.4 Audio Equalizer (Default: Off)

You can use the **Audio Equalizer** to increase/decrease the decibel level of different frequency ranges of audio.

**Balance** will adjust all of the frequency ranges to be the same volume level (0 dB). **Bass Boost** will increase the bass range of audio (20 Hz - 250 Hz). **Mid Boost** will increase the mid range of audio (250 Hz - 4 kHz). **Treble Boost** will increase the high range of audio (4 kHz - 20 kHz).

### 12.2.5 VOX Phone (Default: Enable)

If this feature is enabled, you can answer incoming calls by voice. When you hear a ringtone for an incoming call, you can answer the phone by saying a word such as **"Hello"** loudly or by blowing air into the microphone. **VOX phone** is temporarily disabled if you are connected to intercom. If this feature is disabled, you have to tap the **Center Button** to answer an incoming call.

### 12.2.6 VOX Intercom (Default: Disable)

If **VOX Intercom** is enabled, you can initiate an intercom conversation with the last connected intercom friend by voice. When you want to start intercom, say a word such as **"Hello"** loudly or blow air into the microphone. If you start an intercom conversation by voice, the intercom terminates automatically when you and your intercom friend remain silent for 20 seconds. However, if you manually start an intercom conversation by tapping the **Center Button**, you have to terminate the intercom conversation manually. However, if you start the intercom by voice and end it manually by tapping the **Center Button**, you will not be able to start intercom by voice temporarily. In this case, you have to tap the **Center Button** to restart the intercom. This is to prevent repeated unintentional intercom connections by strong wind noise. After rebooting the headset, you can start the intercom by voice again.

### 12.2.7 VOX Sensitivity (Default: 3)

**VOX sensitivity** can be adjusted depending on your riding environment. **Level 5** is the highest sensitivity setting and **level 1** is the lowest.

### 12.2.8 Bluetooth Intercom Audio Multitasking (Default: Disabled)

**Audio Multitasking (Bluetooth Intercom Audio Multitasking and Mesh Intercom Audio Multitasking)** allows you to have an intercom conversation while simultaneously listening to music, FM radio, or GPS instructions. The overlaid audio is played in the background with reduced volume whenever there is an intercom conversation and will return to normal volume once the conversation is finished.

The **Mesh Intercom Audio Multitasking** feature is always **on**.

#### Note:

- For **Bluetooth Intercom Audio Multitasking** to work properly, you need to power the headset off and on. **Please restart the headset.**
- **Bluetooth Intercom Audio Multitasking** will be activated during two-way intercom conversations with a headset that also supports this feature.
- Some GPS devices may not support this feature.
- The **Audio Multitasking** feature can be configured through the **Intercom-Audio Overlay Sensitivity** and the **Audio Overlay Volume Management settings**.

### 12.2.9 Intercom-Audio Overlay Sensitivity (Default: 3)

The music, FM radio and GPS volume will be lowered to play in the background if you talk over the intercom while the overlaid audio is playing. You can adjust the intercom sensitivity to activate this background audio mode. **Level 1** has the lowest sensitivity and **level 5** has the highest sensitivity.

**Note:** If your voice is not louder than the sensitivity of the selected level, the overlaid audio will not be lowered.

### 12.2.10 Audio Overlay Volume Management (Default: Disable)

The music, FM radio and GPS overlaid audio reduces in volume whenever there is an ongoing intercom conversation. If **Audio Overlay Volume Management** is enabled, the volume level of the overlaid audio will not be reduced during an intercom conversation.

### 12.2.11 HD Intercom (Default: Enable)

**HD Intercom** enhances the two-way intercom audio from normal quality to HD quality. **HD Intercom** will become temporarily disabled when you enter into a multi-way intercom. If this feature is disabled, the two-way intercom audio will change to normal quality.

**Note:**

- The intercom distance of **HD Intercom** is relatively shorter than that of normal intercom.
- **HD Intercom** will become disabled temporarily when **Bluetooth Intercom Audio Multitasking is enabled**.

### 12.2.12 HD Voice (Default: Enable)

**HD Voice** allows you to communicate in high-definition during phone calls. This feature increases the quality so that the audio will be crisp and clear during phone call conversations.

If this feature is enabled, incoming phone calls will interrupt intercom conversations and audio from the SR10 will not be heard during intercom conversations. Three-Way Conference Phone Call with Intercom Participant will not be available if **HD Voice** is enabled.

**Note:**

- Refer to the manufacturer of your Bluetooth device that will be connected to the headset to see if it supports **HD Voice**.
- **HD Voice** is active only when **Bluetooth Intercom Audio Multitasking** is disabled.

### 12.2.13 Smart Volume Control (Default: Disable)

Enabling **Smart Volume Control** automatically changes the level of the speaker volume based on the level of the environment noise. You can enable it by setting the sensitivity to **low**, **medium** or **high**.

### 12.2.14 Sidetone (Default: Disable)

**Sidetone** is audible feedback of your own voice. It helps you to naturally speak at the correct level according to varying helmet noise conditions. If this feature is enabled, you can hear what you are speaking during an intercom conversation or a phone call.

### 12.2.15 Voice Prompt (Default: Enable)

You can disable voice prompts by software configuration settings, but the following voice prompts are always on.

- Headset configuration settings menu, battery level indicator, speed dial, FM radio functions

### 12.2.16 RDS AF Setting (Default: Disable)

**Radio Data System (RDS) Alternative Frequency (AF) Setting** allows a receiver to re-tune to the second frequency location when the first signal becomes too weak. With RDS AF enabled on the receiver, a radio station with more than one frequency can be used.

### 12.2.17 FM Station Guide (Default: Enable)

When **FM Station Guide** is enabled, FM station frequencies are given by voice prompts as you select preset stations. When **FM Station Guide** is disabled, the voice prompts on FM station frequencies will not be given as you select preset stations.

### 12.2.18 Advanced Noise Control™ (Default: Enable)

When **Advanced Noise Control** is enabled, the background noise is reduced during an intercom conversation. When it is disabled, the background noise is mixed with your voice during intercom.

# 13. TROUBLESHOOTING

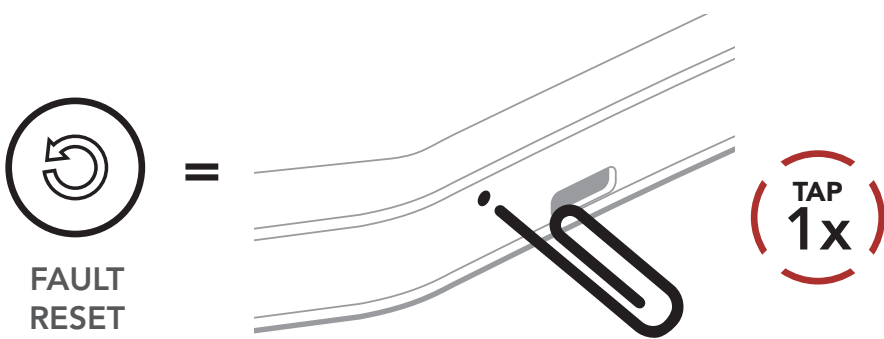
Please visit [sena.com](https://www.sena.com) for answers to frequently asked questions. This detailed online FAQ section deals with troubleshooting, illustrates case studies and contains tips on using the headset.

[Click Here to Visit sena.com](https://www.sena.com)

## 13.1 Fault Reset

When the headset is not working properly, you can easily reset the unit:

1. Locate the **pinhole reset button** at the bottom of the main unit.
2. Gently insert a paperclip into the hole and tap the **Fault Reset Button** with light pressure.

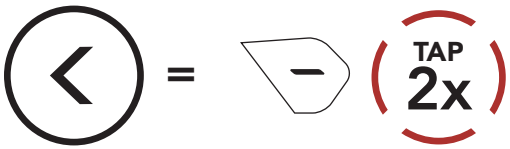
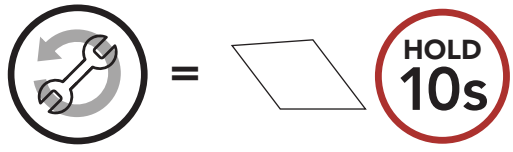


3. The headset will shut down.

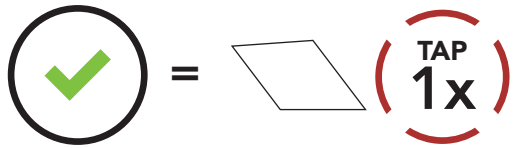
**Note: Fault Reset** will not restore the headset to factory default settings.

## 13.2 Factory Reset

To erase all of your settings and start fresh, the headset can be restored to factory default settings using the **Factory Reset** feature.



"Factory Reset"



"Headset reset, good-bye"



Copyright © 2020 Sena Technologies, Inc.  
All rights reserved.

© 1998–2020 Sena Technologies, Inc. All rights reserved.

Sena Technologies, Inc. reserves the right to make any changes and improvements to its product without providing prior notice.

Sena™ is a trademark of Sena Technologies, Inc. or its subsidiaries in the USA and other countries. SF1™, SF2™, SF4™, SFR™, SRL™, Momentum™, Momentum INC™, Momentum Lite™, Momentum Pro™, Momentum INC Pro™, Momentum EVO™, Cavalry™, Latitude SR™, Latitude SX™, 30K™, 50S™, 50R™, 20S EVO™, 20S™, 10S™, 10C™, 10C PRO™, 10C EVO™, 10U™, 10Upad™, 10R™, 3S™, SMH5™, SMH5-FM™, SMH5 MultiCom™, SMH10™, SMH10R™, SPH10™, SPH10H-FM™, Savage™, Prism Tube WiFi™, Prism™, Bluetooth Audio Pack for GoPro®, R1™, R1 EVO™, R1 EVO CS™, RC1™, RC3™, RC4™, Handlebar Remote™, Wristband Remote™, PowerPro Mount™, Powerbank™, FreeWire™, WiFi Docking Station™, WiFi Sync Cable™, +mesh™, +Mesh Universal™, Econo™, OUTRUSH™, OUTSTAR™, EcoCom™, SR10™, SR10i™, SM10™, X1™, X1 Pro™, Expand™, Bluetooth Mic & Intercom™, Tufftalk™, Tufftalk Lite™, Tufftalk M™ are trademarks of Sena Technologies, Inc. or its subsidiaries. These trademarks may not be used without the express permission of Sena.

GoPro® is a registered trademark of Woodman Labs of San Mateo, California. Sena Technologies, Inc. ("Sena") is not affiliated with Woodman Labs, Inc. The Sena Bluetooth Pack for GoPro® is an aftermarket accessory specially designed and manufactured by Sena Technologies, Inc. for the GoPro® Hero3 and Hero4 allowing for Bluetooth capabilities.

The Bluetooth® word mark and logos are owned by the Bluetooth SIG, Inc. and any use of such marks by Sena is under license. iPhone® and iPod® touch are registered trademarks of Apple Inc.

Address: 152 Technology Drive Irvine, CA 92618