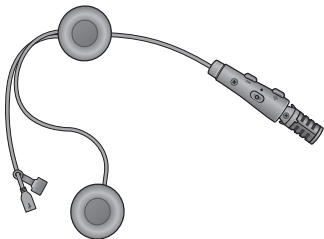


SENA



ACS-RAM

**MOTORCYCLE BLUETOOTH®
COMMUNICATION SYSTEM**

HD SPEAKERS

QUICK START GUIDE

■ Downloadable Sena Software

Download the **SENA MOTORCYCLES App** on **Google Play Store** or **App Store**.



SENA MOTORCYCLES

- Device Configuration Setting

Download the following items at **sena.com**.



Firmware



Sena Device Manager

- Firmware upgrade
- Device configuration setting



Quick Start Guide, User's Guide

Follow us on Facebook, YouTube, Twitter and Instagram to check the latest information and helpful tips.

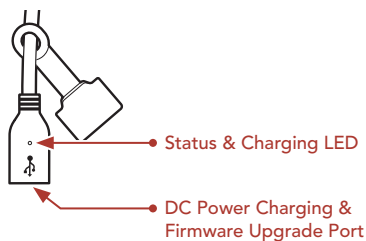
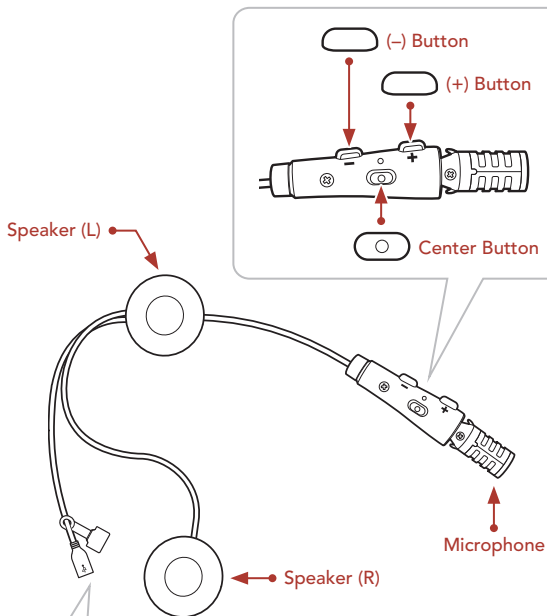
SENA



SENA Technologies, Inc.

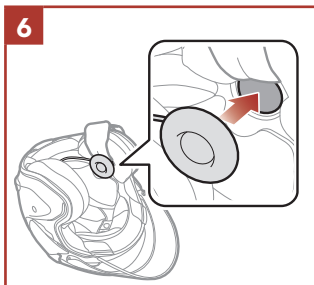
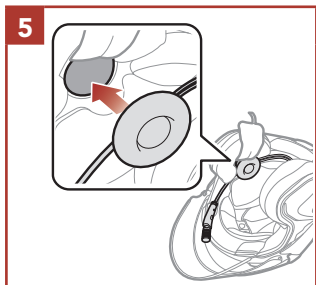
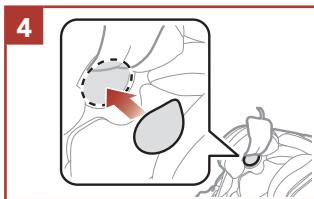
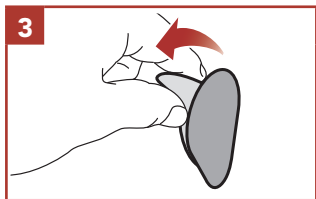
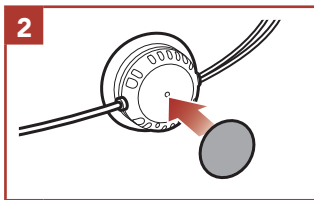
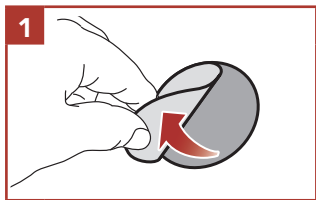
Customer Support: **sena.com**

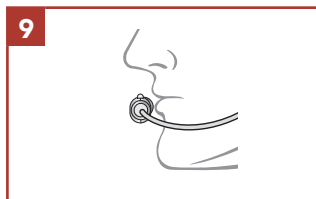
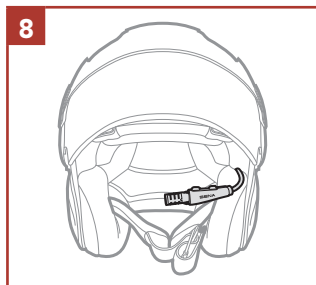
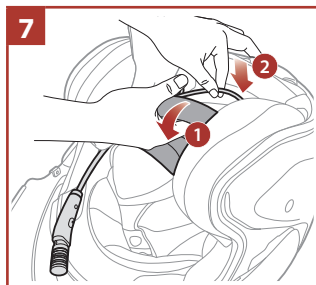
■ Product Details



■ Installation

- The **ACS-RAM** fits best when installed on the **Arai SZ-R VAS** Helmet.
- For more information about installation, refer to the User's Guide.





Icon Legend



Tap button the specified number of times



Press and Hold button for the specified amount of time

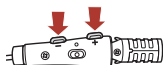


"Hello"

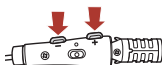
Audible prompt

Basic Operations

Powering On



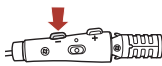
Powering Off



Volume Up



Volume Down



Checking the Battery Level

Powering On



=



=



=

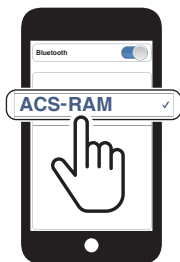


■ Phone Pairing

When you initially turn on the headset:



- ③ Select **ACS-RAM** in the list of Bluetooth devices detected.



- For more information on phone pairing, refer to the User's Guide.

■ Using the Phone

Answer a Call



End a Call



Reject a Call



Voice Dial



Redial Last Number



■ Music Control

Play/Pause



Track Forward



Track Backward



Bluetooth Intercom

The **headset** can be paired with another headset for Bluetooth intercom conversation.






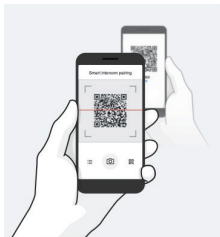
Intercom Pairing

There are two ways to pair the headset.

Using the Smart Intercom Pairing (SIP)

SIP allows you to quickly pair with your friends for intercom communication by scanning the QR code on the **SENA MOTORCYCLES App** without remembering the button operation.

- ① Pair the mobile phone with the headset.
- ② Open the **SENA MOTORCYCLES App** and tap  (**Smart Intercom Pairing Menu**).
- ③ Scan the **QR code** displayed on your friend (**B**)'s mobile phone.
 - Your friend (**B**) can display the QR code on the mobile phone by tapping  > **QR code**  on the **SENA MOTORCYCLES App**.



- ④ Tap **Save** and check that your friend **(B)** is paired with **you (A)** correctly.

Note: The **Smart Intercom Pairing (SIP)** is not compatible with Sena products that use **Bluetooth 3.0** or **below**.

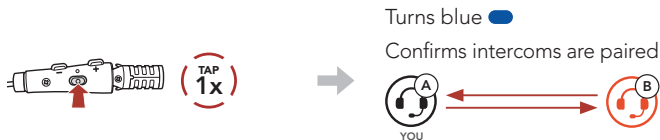
Using the Button



- ① **Users (You, B)** enter into **Intercom Pairing**.



- ② Tap the **Center Button** on either headset.



Two-way Intercom

Start/End Conversation with the Intercom Friend

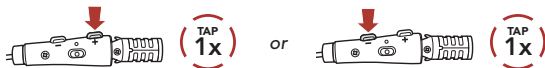


Configuration Menu

Accessing the Configuration Menu



Navigating Between Menu Options

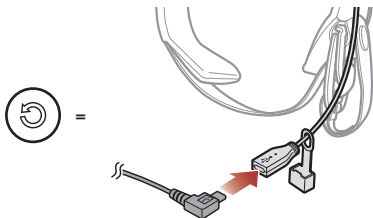


Execute Menu Options



Troubleshooting

Fault Reset
















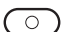

















When the USB charging & data cable connects a power supply to the headset, the headset will automatically be turned off and a fault reset will occur.

Note: Fault Reset will not restore the headset to factory default settings.

Factory Reset

- ①   →  "Configuration menu"
- ②   →  "Factory reset"
- ③   →  "Headset reset, good-bye"

Quick Reference

TYPE	OPERATION	BUTTON COMMANDS
 Basic Operations	Power on	  
	Power off	  
	Volume up/down	 or  
 Mobile Phone	Answer phone call	 
	End/reject phone call	 
	Voice dial	 
	Redial Last Number	 
 Music	Play/Pause music	 
	Track forward	 
	Track backward	 
 Intercom	Intercom pairing	 
		 
	Start/end intercom	