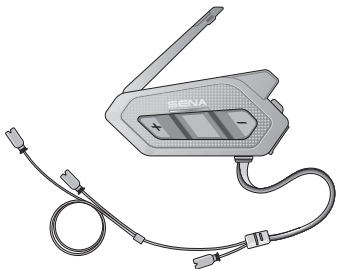


SENA



SPIDER RT1

MOTORCYCLE MESH COMMUNICATION SYSTEM

HD SPEAKERS

QUICK START GUIDE

■ Downloadable Sena Software

Download the **SENA MOTORCYCLES App** at **Google Play Store** or **App Store**.



SENA MOTORCYCLES

Download the following items at **sena.com**.



Firmware



Sena Device Manager

- Firmware upgrade
- Device configuration setting



**Quick Start Guide,
User's Guide**

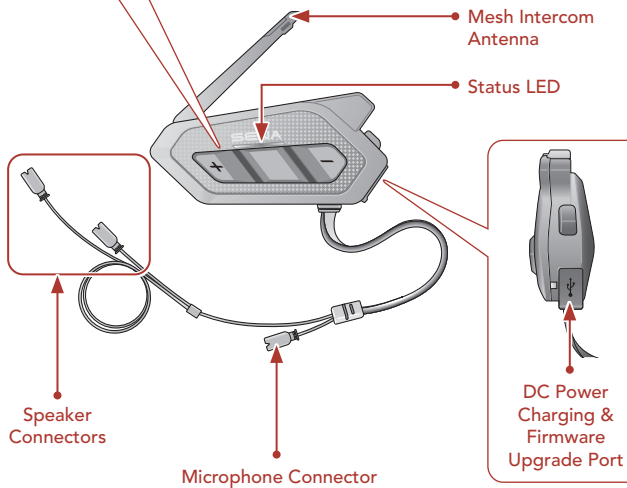
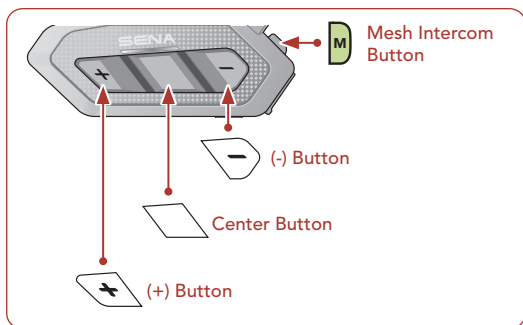
Follow us on Facebook, YouTube, Twitter and Instagram to check the latest information and helpful tips.

SENA

SENA Technologies, Inc.
Customer Support: sena.com

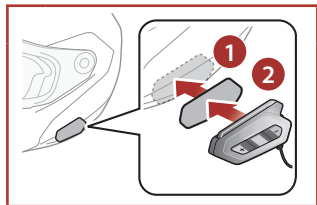


Product Details

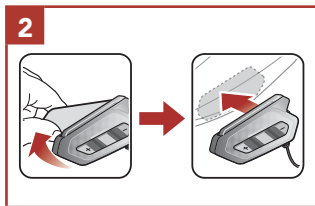
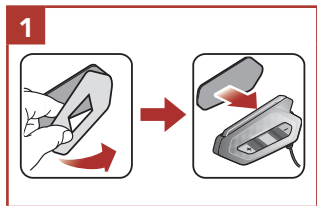


■ Installation

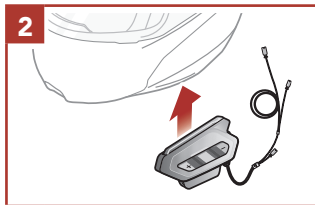
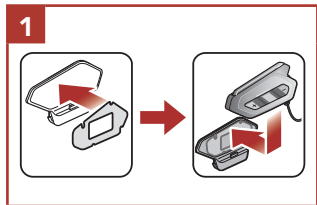
Using the Hook and Loop Fasteners for Main Unit



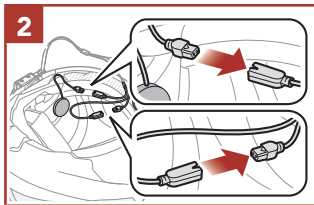
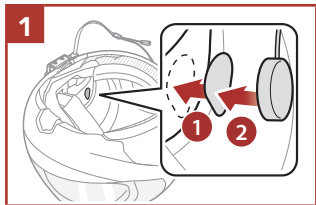
Using the Double Sided Adhesive Tapes for Main Unit



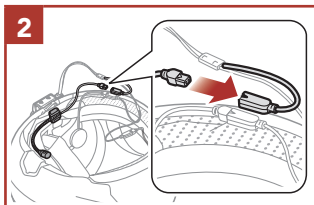
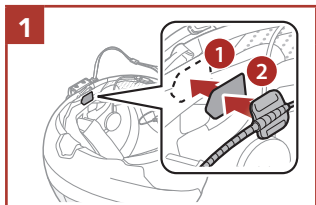
Using the Clamp for Main Unit



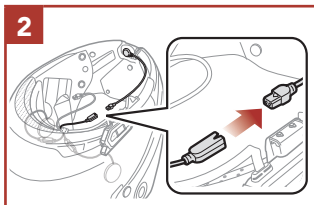
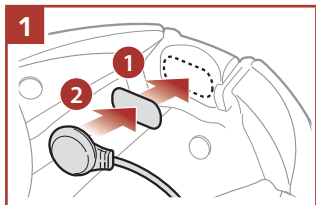
Installing the Speakers



Installing the Wired Boom Microphone



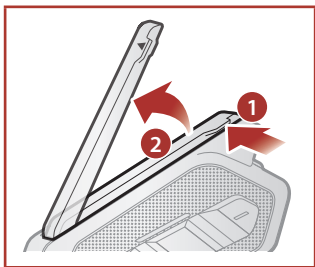
Installing the Wired Microphone



- For more information about installation, refer to the User's Guide.

Mesh Intercom Antenna

Pull the Mesh Intercom Antenna inwards slightly to unfold it.



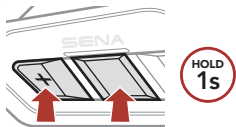
Icon Legend

TAP 1x Tap button the specified number of times

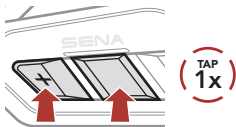
HOLD 10s Press and Hold button for the specified amount of time

Basic Operations

Powering On



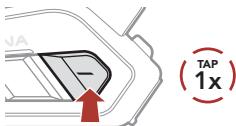
Powering Off



Volume Up



Volume Down



■ Checking the Battery Level

Powering On

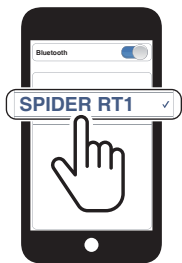


■ Phone Pairing

When you initially turn on the headset:



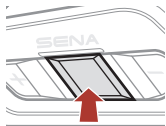
- ② Select **SPIDER RT1** in the list of Bluetooth devices detected.



- For more information on phone pairing, refer to the User's Guide.

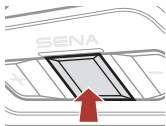
Using the Phone

Answer a Call



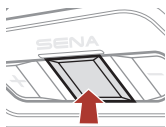
TAP
1x

End a Call



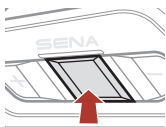
HOLD
2s

Reject a call



HOLD
2s

Voice Dial

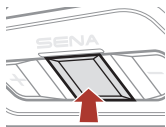


HOLD
3s

in
stand-by
mode

Music Control

Play/Pause



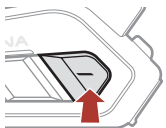
HOLD
1s

Track forward



HOLD
1s

Track backward



HOLD
1s

Mesh Intercom™

Open Mesh™: communication within the same channel.

Group Mesh™: communication within the same private group.

- For more information on **Mesh Intercom**, refer to the User's Guide.

Mesh Intercom On



Mesh Intercom Off



Note: When **Mesh Intercom** is on, the **SPIDER RT1** will automatically connect to nearby **SPIDER RT1** users and the headset will be in **Open Mesh (default: channel 1)** initially.

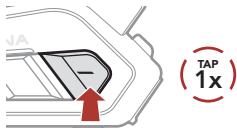
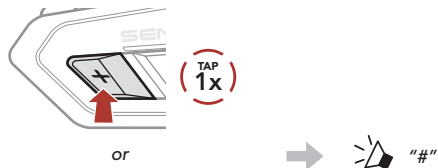
Open Mesh

Channel Setting (Default: channel 1) in Open Mesh

- ① Enter into the **Channel Setting**.



- ② Navigate between channels.
(1 → 2 → ●●● → 8 → 9 → Exit → 1 → ●●●)



- ③ Save the channel.



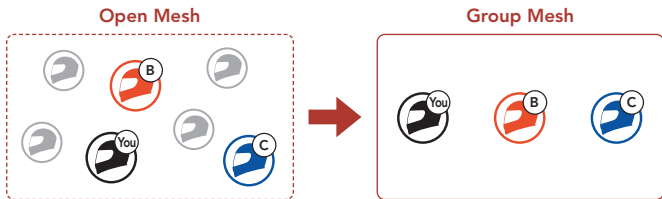
Note: You can use the **SENA MOTORCYCLES App** to change the channel.

Group Mesh

Group Mesh is a closed group intercom function that allows users to join, leave, or rejoin a group intercom conversation without pairing each headset.

1) Creating a Group Mesh

Creating a **Group Mesh** requires **two or more Open Mesh users**.



- ① **Users (You, B, and C)** enter into **Mesh Grouping** to create a **Group Mesh**.

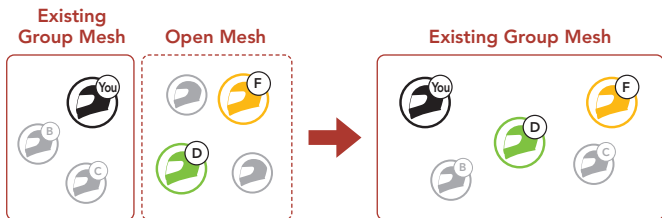


- ② When **Mesh Grouping** is completed, the **users (You, B and C)** will hear a voice prompt on their headset as **Open Mesh** switches to **Group Mesh**.



2) Joining an Existing Group Mesh

One of the **current users** in an **Existing Group Mesh** can allow **new users (one or more)** in **Open Mesh** to join the **Existing Group Mesh**.



- ① One (**You**) of the **current users** in the **Existing Group Mesh** and **new users (D and F)** in **Open Mesh** enter into **Mesh Grouping** to join the **Existing Group Mesh**.

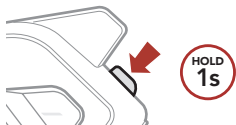


- ② When **Mesh Grouping** is completed, the **new users (D and F)** will hear a voice prompt on their headset as **Open Mesh** switches to **Group Mesh**.



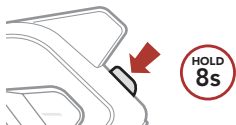
■ Enable/Disable Mic (Default: Enable)

Users can enable/disable the microphone when communicating in a **Mesh Intercom**.



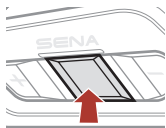
■ Reset Mesh

If a headset in an **Open Mesh** or **Group Mesh** resets the **Mesh**, it will automatically return to **Open Mesh (default: channel 1)**.



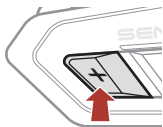
■ Configuration Menu

Accessing the Configuration Menu

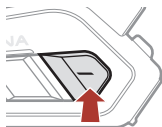


"Configuration Menu"

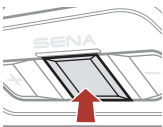
Navigating Between Menu Options



or

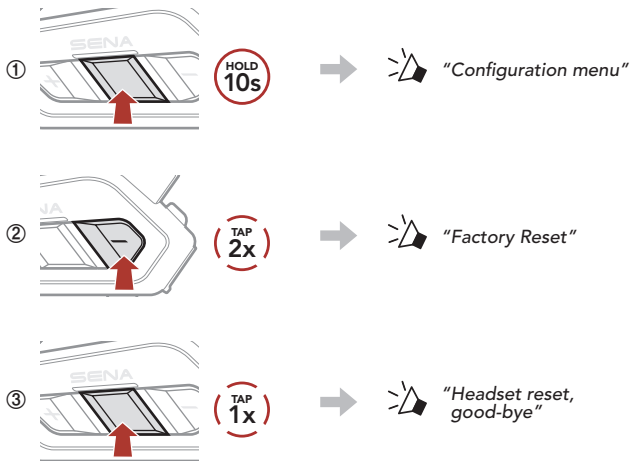


Execute Menu Options

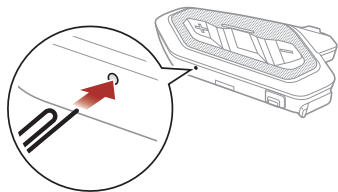


Troubleshooting

Factory Reset




































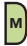

Fault Reset



Note: Fault Reset will not restore the headset to the factory default settings.

Quick Reference

TYPE	OPERATION	BUTTON COMMANDS
 Basic Operations	Power on / Power off	     
	Volume up / Volume down	 or  
 Mobile Phone	Answer phone call	 
	End phone call	 
	Reject phone call	 
	Voice Dial	 
 Music	Play/Pause music	 
	Track forward	 
	Track backward	 

TYPE	OPERATION	BUTTON COMMANDS
 <p data-bbox="104 438 227 485">Mesh Intercom™</p>	Mesh Intercom on/off	 
	Channel setting	 
	Mesh Grouping	 
	Reset Mesh	 
	Enable/Disable Mic	