

# SMART HJC 21B

2<sup>nd</sup> GEN STANDARD MOTORCYCLE BLUETOOTH®  
COMMUNICATION SYSTEM FOR HJC HELMETS

**HD** SPEAKERS

## Downloadable Software

Download the **SMART HJC BT App** on [Google Play Store](#) or [App Store](#).



### SMART HJC BT

- Device Configuration Setting

Download the following items at [www.smarthjc.com](http://www.smarthjc.com)



### SMART HJC Device Manager

- Firmware upgrade
- Device configuration setting

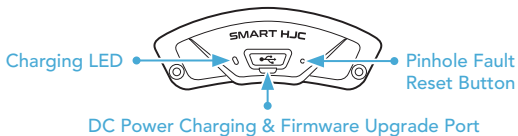


### Quick Start Guide, User's Guide

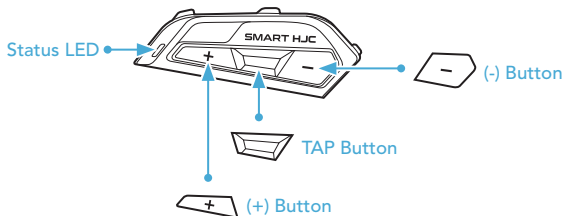
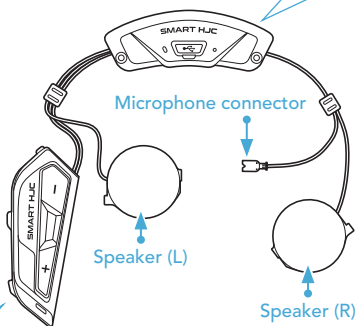


HJC Corporation  
[www.smarthjc.com](http://www.smarthjc.com)

## Product Details



Bluetooth Module



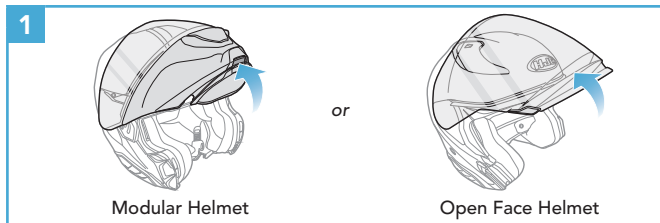
Button Module

## Installation

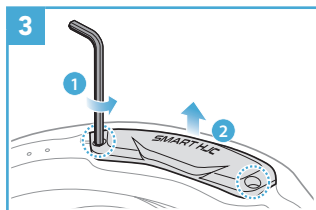
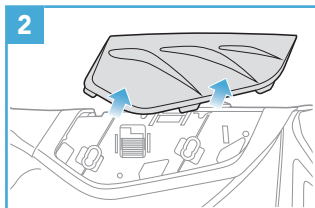
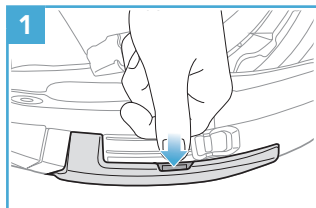
**SMART HJC 21B** compatible **HJC helmets** can be found at [www.smarthjc.com](http://www.smarthjc.com)

- For more information about installation, refer to the User's Guide.

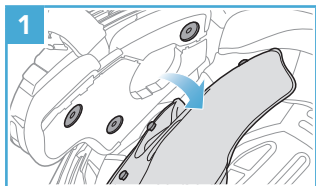
### 1. Modular Chin Bar / Open & Full Face Visor Opening



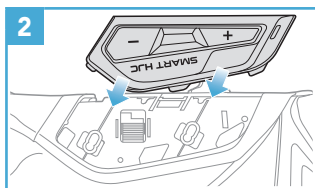
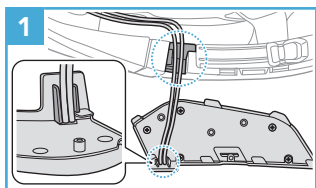
### 2. Helmet Module Cover Removing



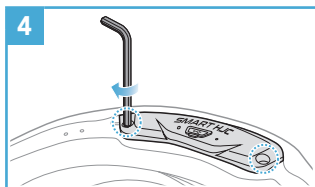
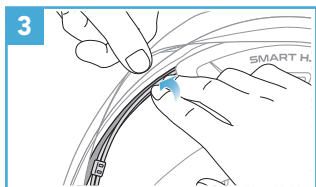
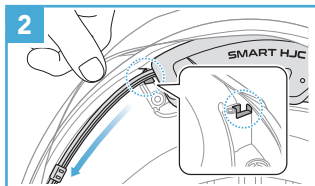
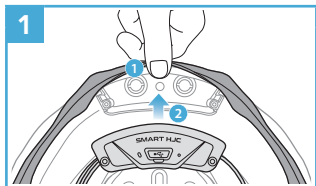
### 3. Helmet's Cheek Pad Take Off



### 4. Button Module Installation

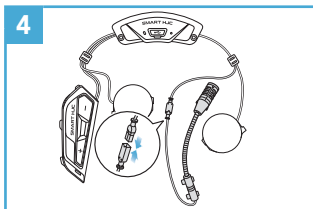
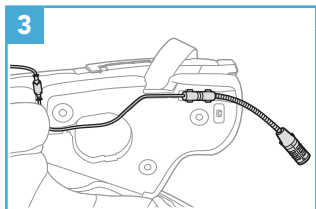
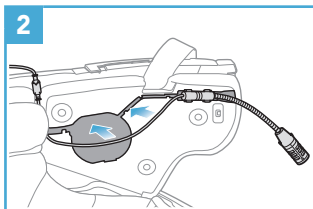
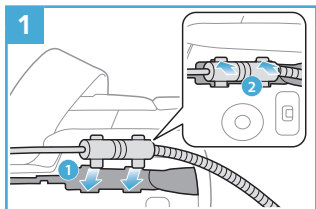


### 5. Bluetooth Module Installation

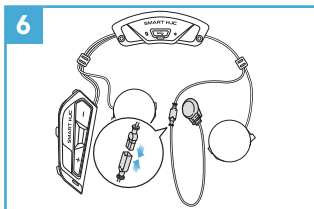
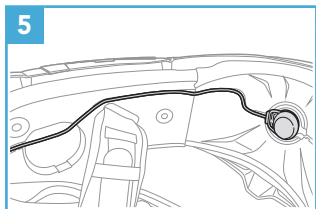
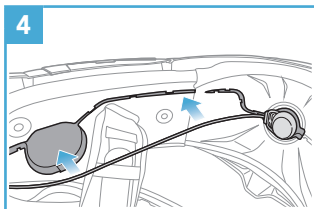
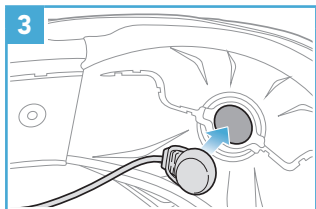
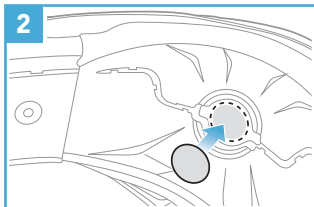
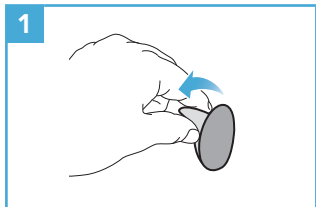


## 6. Microphone Installation

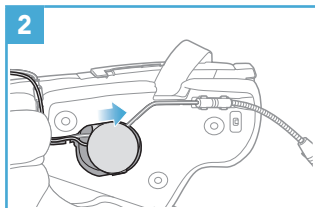
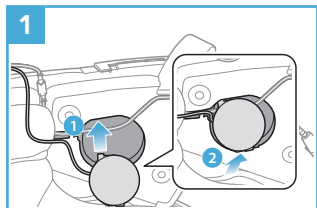
### 6.1 Modular or Open Face Microphone Installation



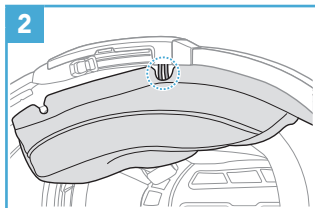
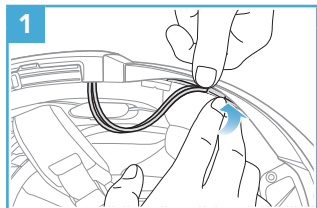
## 6.2 Full Face Microphone Installation



## 7. Speaker Module Installation

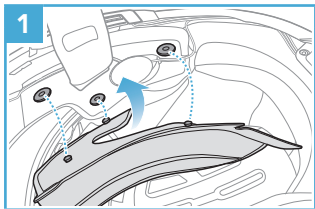


## 8. Wire Arrangement

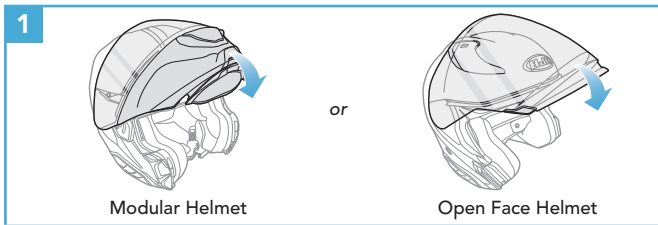





## 9. Cheek Pad Fasten Up



## 10. Modular Chin Bar / Open & Full Face Visor Closing



## Icon Legend

 Tap button the specified number of times

 Press and Hold button for the specified amount of time



"Hello"

Audible prompt

## Basic Operations

Powering On



Powering Off



Volume Up



Volume Down



## Checking the Battery Level

Powering On



## Phone Pairing



- ③ Select **SMART HJC 21B** in the list of Bluetooth devices detected.



- The headset will enter the **Phone Pairing mode** automatically when you **initially turn on** the headset.
- For more information on phone pairing, refer to the User's Guide.

## Using the Phone

### Answer a Call



### End a Call



### Reject a Call



### Voice Dial



## Music Control

### Play/Pause



### Track Forward

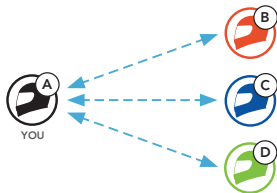


### Track Backward



## Bluetooth Intercom

Up to three other people can be paired with the headset for Bluetooth intercom conversations.






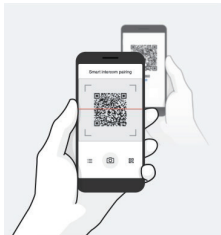
### Intercom Pairing

There are two ways to pair the headset.

#### Using the Smart Intercom Pairing (SIP)

**SIP** allows you to quickly pair with your friends for intercom communication by scanning the QR code on the **SMART HJC BT App** without remembering the button operation.

- ① Pair the mobile phone with the headset.
- ② Open the **SMART HJC BT App** and tap  (**Smart Intercom Pairing Menu**).
- ③ Scan the **QR code** displayed on your friend (**B**)'s mobile phone.
  - Your friend (**B**) can display the QR code on the mobile phone by tapping  > **QR code** () on the **SMART HJC BT App**.



- ④ Tap **Save** and check that your friend **(B)** is paired with **you (A)** correctly.
- ⑤ Tap **Scan** (📷) and repeat steps 3-4 to pair with **Intercom Friends (C) and (D)**.

**Note:** The **Smart Intercom Pairing (SIP)** is not compatible with SMART HJC headsets that use **Bluetooth 3.0** or **below**.

### Using the Button



- ① **Each user** simultaneously presses and holds the **TAP Button** for **5 seconds** until users hear the voice prompt, **"Intercom Pairing."**



- ② Tap the **TAP Button** on either headset.

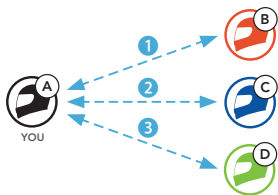


- ③ Repeat the steps above to pair with **other headsets (C and D)**.

## Last-Come, First-Served

If the headset has multiple paired headsets for intercom conversations, the last paired headset is set as the **First Intercom Friend**.

### Intercom Pairing Order



### Last-Come, First-Served



## Two-way Intercom

### Start/End Conversation with the First Intercom Friend D



### Start/End Conversation with the Second Intercom Friend C

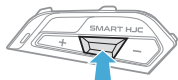


### Start/End Conversation with the Third Intercom Friend B



# Configuration Menu

## Accessing the Configuration Menu

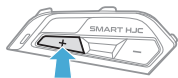


HOLD  
10s



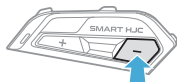
"Configuration menu"

## Navigating Between Menu Options



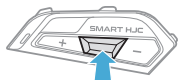
TAP  
1x

or



TAP  
1x

## Execute Menu Options

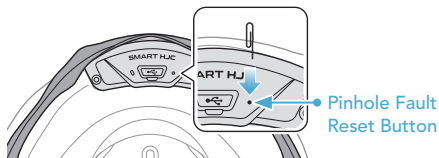


TAP  
1x



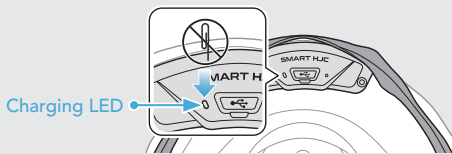
# Troubleshooting

## Fault Reset




### Note:


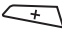





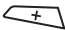










- **Fault Reset** will not restore the headset to factory default settings.
- The charging LED is not the **Pinhole Fault Reset Button**. Do not press it.













## Factory Reset

-  ①  **HOLD 10s** →  "Configuration menu"
-  ②  **TAP 2x** →  "Factory reset"
-  ③  **TAP 1x** →  "Headset reset, good-bye"

## Quick Reference

TYPE	OPERATION	BUTTON COMMANDS
 Basic Operations	Power on / Power off	     
	Volume up / Volume down	 or  
 Mobile Phone	Answer phone call	 
	End phone call	 
	Reject phone call	 
	Voice Dial	 

TYPE	OPERATION	BUTTON COMMANDS
 Intercom	Intercom pairing	 
		 
 Music	Play/Pause music	 
	Track forward	 
	Track backward	