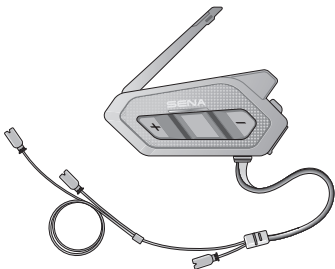


SENA



SPIDER RT1

MOTORCYCLE MESH COMMUNICATION SYSTEM

HD SPEAKERS

QUICK START GUIDE

■ Downloadable Sena Software

Download the **Sena Motorcycles App** at [Google Play Store](#) or [App Store](#).



Sena Motorcycles

- Device configuration
- Over-The-Air (OTA) Firmware Update

Download the following items at [sena.com](#).



Sena Device Manager

- Firmware upgrade
- Device configuration setting



Quick Start Guide, User's Guide

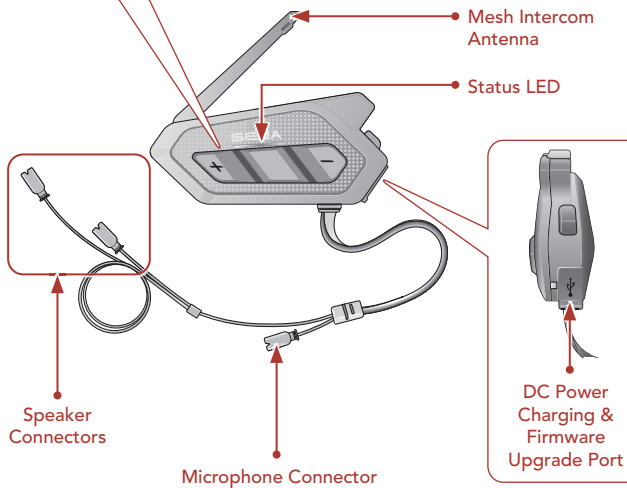
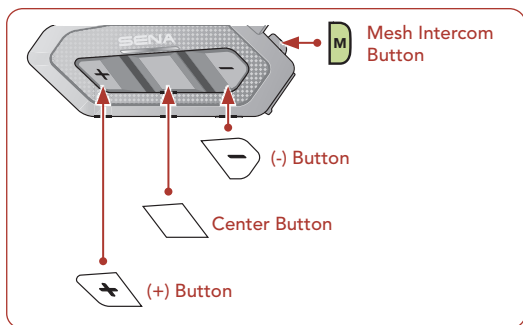
Follow us on Facebook, YouTube, Twitter and Instagram to check the latest information and helpful tips.

SENA



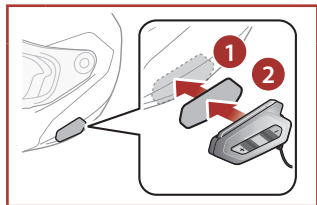
Sena Technologies Co., Ltd.
Customer Support: [sena.com](#)

■ Product Details

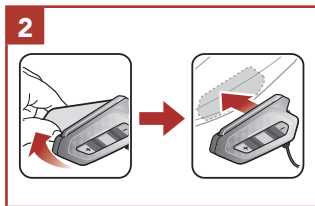
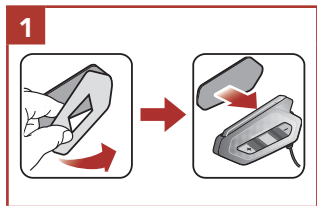


■ Installation

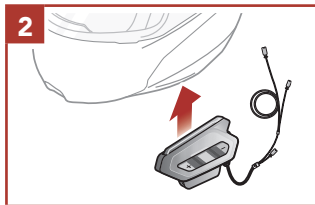
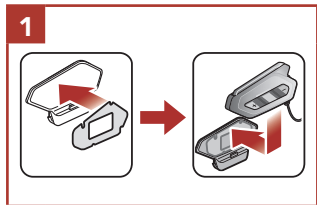
Using the Hook and Loop Fasteners for Main Unit



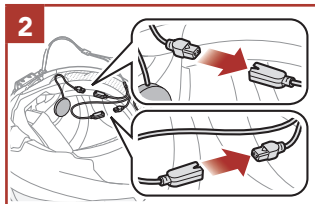
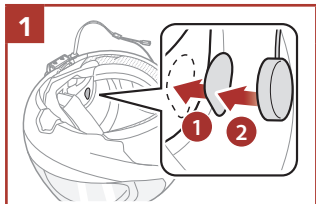
Using the Double Sided Adhesive Tapes for Main Unit



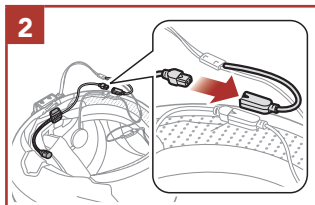
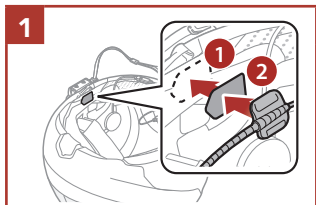
Using the Clamp for Main Unit



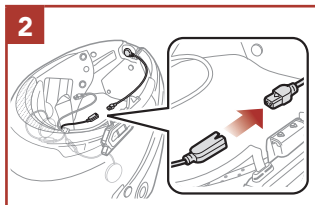
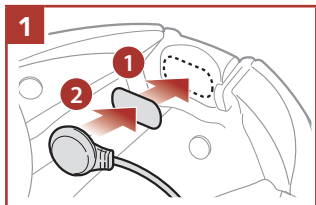
Installing the Speakers



Installing the Wired Boom Microphone



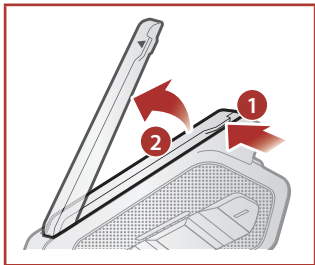
Installing the Wired Microphone



- For more information about installation, refer to the User's Guide.

Mesh Intercom Antenna

Pull the Mesh Intercom Antenna inwards slightly to unfold it.



NOTICE

- This **Quick Start Guide (Version 2.0.0 or higher)** explains how to operate the SPIDER RT1 with **firmware version 2.0.0 or higher**.
- For operating the SPIDER RT1 with **a firmware version lower than 2.0.0**, refer to the **SPIDER RT1 Quick Start Guide** that is available when you connect the SPIDER RT1 to the **Sena Motorcycles App**.

Icon Legend



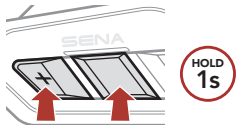
Tap button the specified number of times



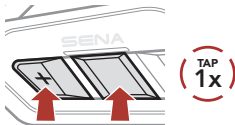
Press and Hold button for the specified amount of time

Basic Operations

Powering On



Powering Off



Volume Up



Volume Down



Checking the Battery Level

Powering On



and

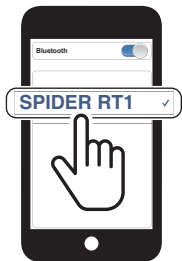


"Battery level is high/medium/low"

Phone Pairing



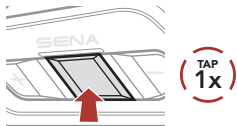
- ② Select **SPIDER RT1** in the list of Bluetooth devices detected.



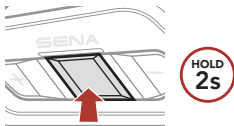
- The headset will enter the **Phone Pairing mode** automatically when you **initially turn on** the headset.
- For more information on phone pairing, refer to the User's Guide.

Using the Phone

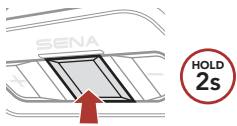
Answer a Call



End a Call



Reject a call

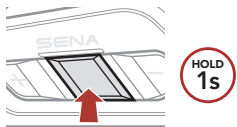


Call a Voice Assistant



Music Control

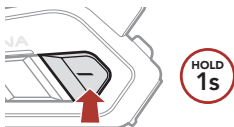
Play/Pause



Track forward



Track backward



Mesh Intercom™

Open Mesh™: communication within the same channel.

Group Mesh™: communication within the same private group.

- For more information on **Mesh Intercom**, refer to the User's Guide.

Mesh Intercom On



Mesh Intercom Off



Note: When **Mesh Intercom** is on, the **SPIDER RT1** will automatically connect to nearby **SPIDER RT1** users and the headset will be in **Open Mesh (default: channel 1)** initially.

Open Mesh

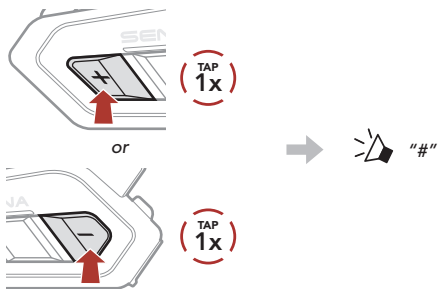
Channel Setting (Default: channel 1) in Open Mesh

Using the Button

- ① Enter into the **Channel Setting**.



- ② Navigate between channels.
(1 → 2 → ●●● → 8 → 9 → Exit → 1 → ●●●)



- ③ Save the channel.



Using the Sena Motorcycles App

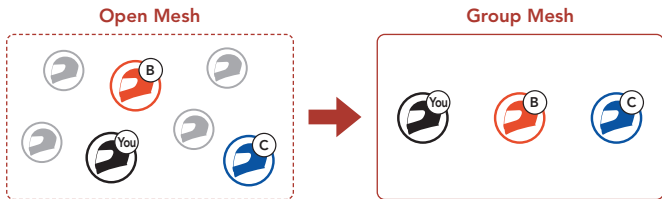
You can select the channel through the **Sena Motorcycles App**.

Group Mesh

Group Mesh is a closed group intercom function that allows users to join, leave, or rejoin a group intercom conversation without pairing each headset.

1) Creating a Group Mesh

Creating a **Group Mesh** requires **two or more Open Mesh users**.



- ① **Users (You, B, and C)** enter into **Mesh Grouping** to create a **Group Mesh**.

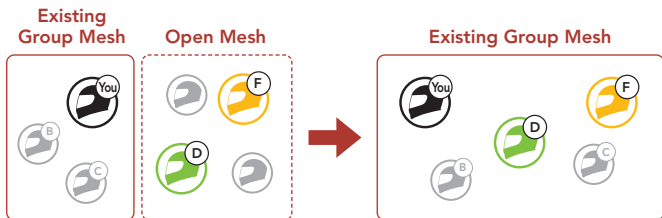


- ② When **Mesh Grouping** is completed, the **users (You, B and C)** will hear a voice prompt on their headset as **Open Mesh** switches to **Group Mesh**.



2) Joining an Existing Group Mesh

One of the **current users** in an **Existing Group Mesh** can allow **new users (one or more)** in **Open Mesh** to join the **Existing Group Mesh**.



- ① One (**You**) of the **current users** in the **Existing Group Mesh** and **new users (D and F)** in **Open Mesh** enter into **Mesh Grouping** to join the **Existing Group Mesh**.

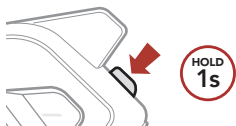


- ② When **Mesh Grouping** is completed, the **new users (D and F)** will hear a voice prompt on their headset as **Open Mesh** switches to **Group Mesh**.



■ Enable/Disable Mic (Default: Enable)

Users can enable/disable the microphone when communicating in a **Mesh Intercom**.

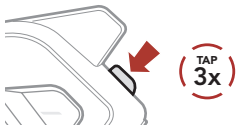


■ Mesh Reach-Out Request

You (caller) can send a request message to turn on the Mesh Intercom to nearby friends who have it turned off.

- ① If you want to send or receive a request message, you need to enable **Mesh Reach-Out** on the **Sena Motorcycles App**.
- ② While your headset's Mesh Intercom is on, you (caller) send a request message using the **headset's Button** or the **Sena Motorcycles App**.

[Caller]



[Caller]



"Mesh reach-out request"

[Nearby Friends]



"Mesh intercom requested"

- ③ Friends who receive the request message need to manually turn on their Mesh Intercom using the **headset's Button** or the **Sena Motorcycles App**.

Reset Mesh

If a headset in an **Open Mesh** or **Group Mesh** resets the **Mesh**, it will automatically return to **Open Mesh (default: channel 1)**.

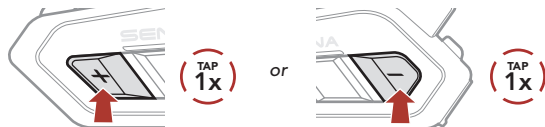


Configuration Menu

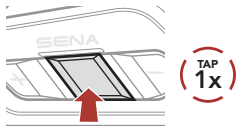
Accessing the Configuration Menu



Navigating Between Menu Options

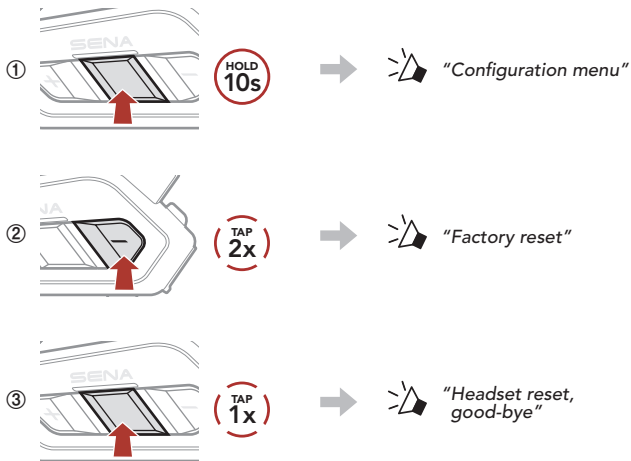


Execute Menu Options

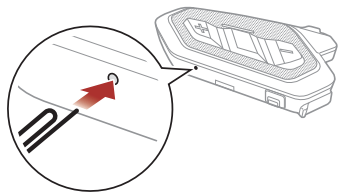


Troubleshooting

Factory Reset



































Fault Reset



Note: Fault Reset will not restore the headset to the factory default settings.

Quick Reference

TYPE	OPERATION	BUTTON COMMANDS
 Basic Operations	Power on/ Power off	     
	Volume up/Volume down	 or  
 Mobile Phone	Answer phone call	 
	End phone call	 
	Reject phone call	 
	Call a Voice Assistant	 
 Music	Play/Pause music	 
	Track forward	 
	Track backward	 

TYPE	OPERATION	BUTTON COMMANDS
 <p data-bbox="104 494 228 538">Mesh Intercom™</p>	Mesh Intercom on/off	
	Channel setting	
	Mesh Grouping	
	Enable/Disable Mic	
	Mesh Reach-Out Request	
	Reset Mesh	