

QUICK START GUIDE



EN

SC
EDGE
ANC
active noise cancellation



SCHUBERTH

The SC EDGE ANC is approved according to ECE 22.06 for the following SCHUBERTH helmets:

Helmet model	approval number
C5	0610510

Serial number / Batch number

Approval number acc. ECE 22.06



Certifying authority

Sequential number



Cardo Connect App SCHUBERTH SC EDGE ANC

App functions: Mesh Intercom, Bluetooth Intercom,
Music, Device settings, Language settings,
Voice Commands List



User's Guide

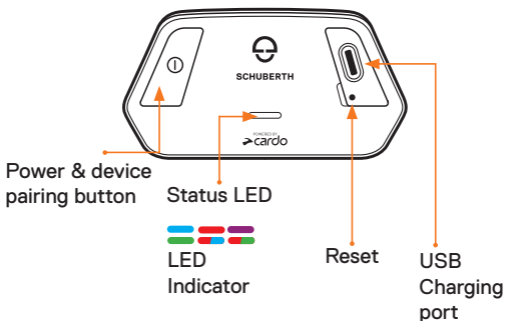
This product comes with a Quick Start Guide, which is a basic version of the User's Guide.

A full version of the user's guide can be downloaded from:

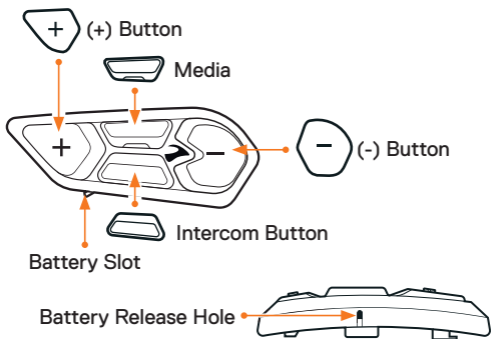
cardosystems.com/pages/support/sc-edge-anc

PRODUCT DETAILS

SC EDGE ANC

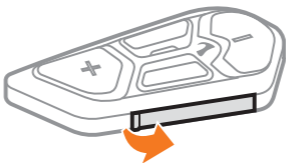


SC EDGE ANC Remote Control



INSERTING THE BATTERY

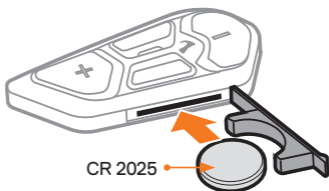
1



2



3



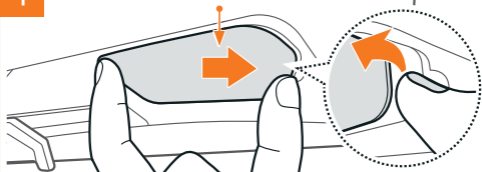
CR 2025

*unit also compatible with CR 2016

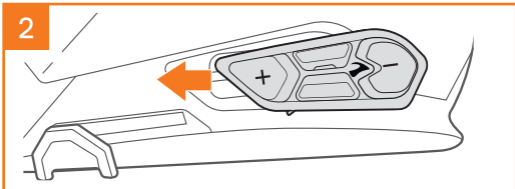
INSTALLING THE SC EDGE ANC REMOTE CONTROL

1

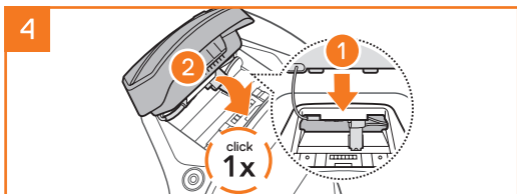
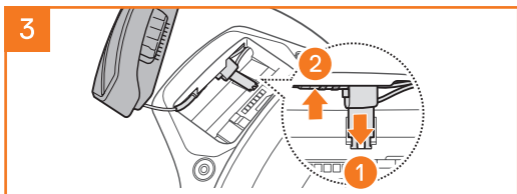
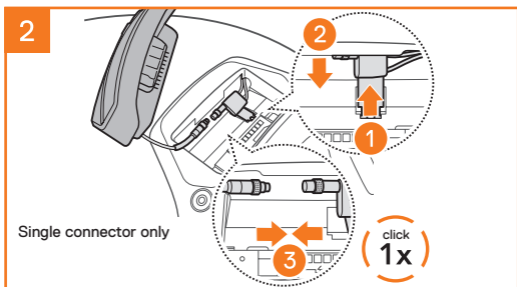
Cover for the SC EDGE ANC Remote Control



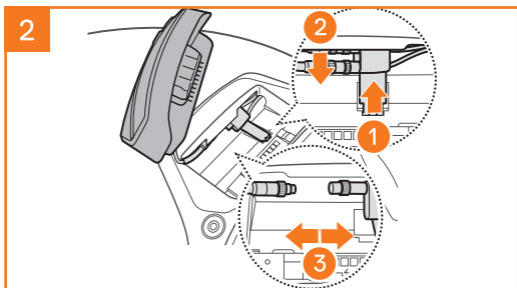
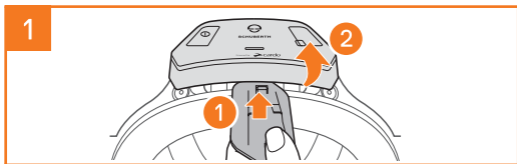
2



INSTALLING THE SC EDGE ANC

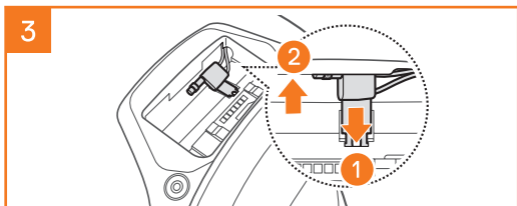


REMOVING THE SC EDGE ANC



Note: When you need to un-plug the connectors, please wiggle and pull it. It will help the connector connection be released more easily.

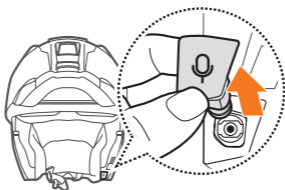
Note: Do not pull on the cable.



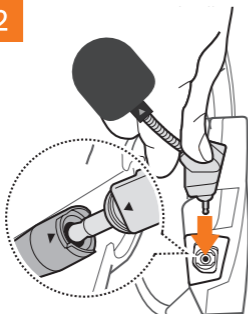
Note: Clean the communicator with a soft, lint-free cloth dampened in an electronic-safe solution, avoiding abrasive materials, and power off before cleaning.

INSTALLING THE MICROPHONE

1

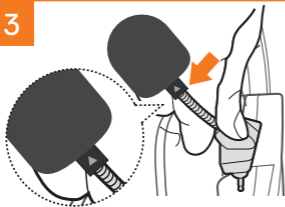


2



Install the microphone by pressing firmly on the area marked with the orange circle.

3



Position the small triangle towards the mouth

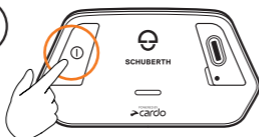
Getting Started

The SC EDGE ANC and the SC EDGE ANC Remote Control come paired together. They will automatically connect to each other when the SC EDGE ANC and the SC EDGE ANC Remote Control are powered on.

* If you are using the SC EDGE ANC Remote Control other than the one included in the package, follow the procedure below to pair the SC EDGE ANC and the SC EDGE ANC Remote Control



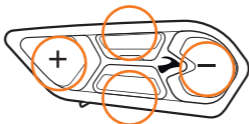
On



Off



Wake up

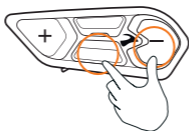


Press any button

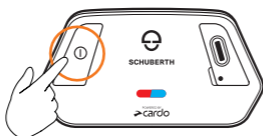
* The remote enters sleep mode after 2 hours of no activity.



Power Off - Remote



Phone pairing



LED Red & Blue 





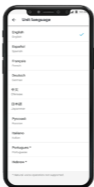
Download



Register and Activate



Choose Language

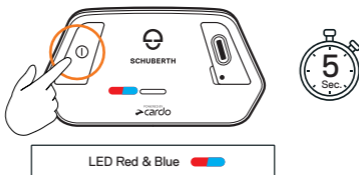


Update Software

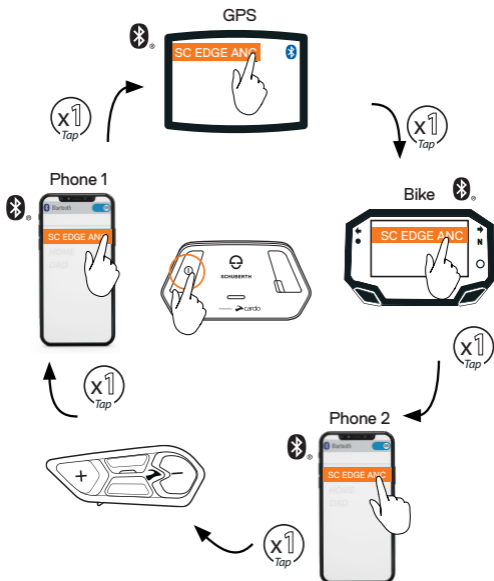


Device pairing (GPS/Bike/Phone)

1 Step 1



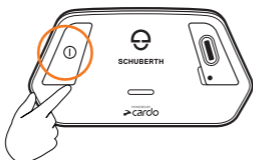
2 Step 2



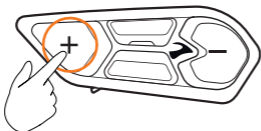
Device pairing (GPS/Bike/Phone)



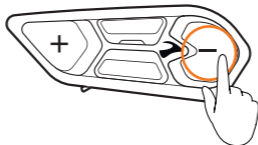
Stop phone



Volume Up



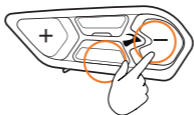
Volume Down



Device pairing (GPS/Bike/Phone)



Mute / Unmute Microphone



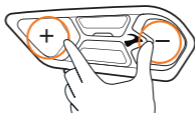
Voice Assistant



Siri



Google Assistant

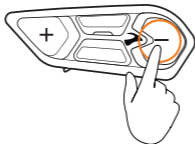


ANC On/off

ANC is off by default & after each power cycle.

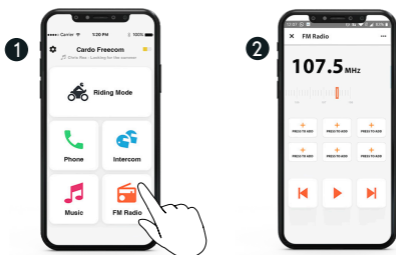


ANC on/off





Set Presets



On



Off



Next Preset

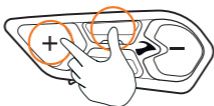


 Previous Preset



 x2
Tap

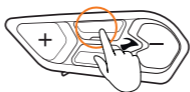
 Auto tune



 2
Sec.

Music

 On



 x1
Tap

 Off



 2
Sec.

 Next



 x1
Tap

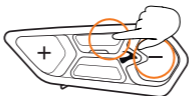
Music



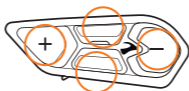
Previous



Mute audio



Unmute audio



tap any button



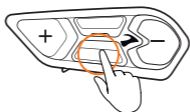


Set Sharing Partner

-
-
-
-



Start / Stop Sharing



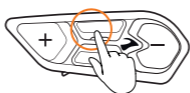
Switch source



Music to Radio



Radio to Music



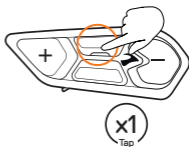
Phone Call



Answer incoming call



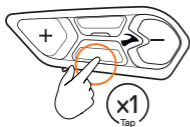
OR



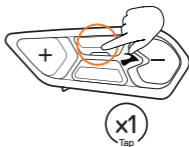
Ignore incoming call



End Call



OR

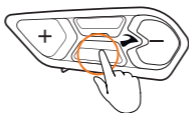


Speed dial (predefined number)





Grouping



LED Red & Green

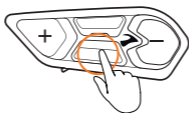


> Grouping Success >

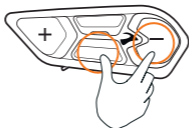
LED Purple



Stop Grouping

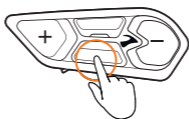


Mute / Unmute group

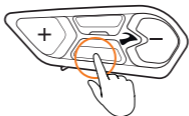




Share call



Start / Stop Private Chat



Connect / Disconnect Bluetooth passenger to DMC



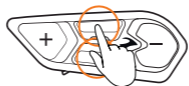
Switch source



DMC to Bluetooth®



Bluetooth® to DMC



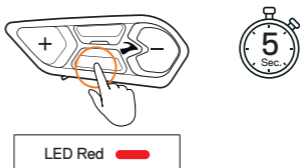
Bluetooth Intercom



Pairing

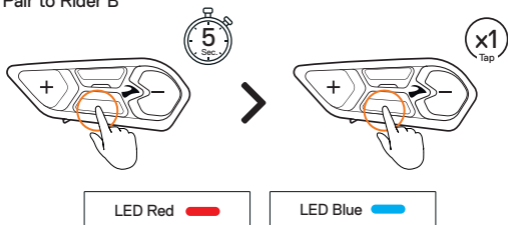


Pair to Rider A



*Start Bluetooth intercom pairing on the other unit, according to its manual

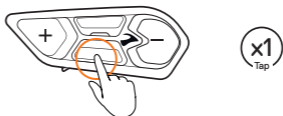
Pair to Rider B



*Start Bluetooth intercom pairing on the other unit, according to its manual



Return to Rider A

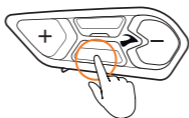




Stop Intercom pairing



Share / Stop phone call

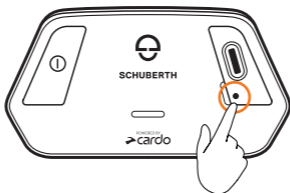


Call/End Intercom (for both Rider A&B)



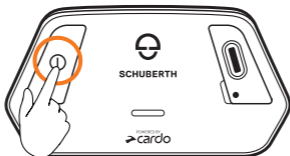
TROUBLE SHOOTING

Reboot



Factory Reset

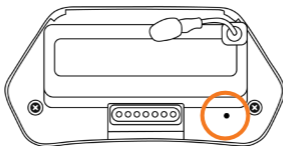
Factory Reset will delete all pairings and all user setting



OR

Through Cardo Connect App

Caution! This hole is a microphone.
Do not insert any sharp object.



Voice Commands - Always On!



- Answer
- Ignore
- “Hey Cardo, end call”
- “Hey Cardo, speed dial”
- “Hey Cardo, redial number”



- “Hey Cardo, music on”
- “Hey Cardo, music off ”
- “Hey Cardo, next track”
- “Hey Cardo, previous track”
- “Hey Cardo, share music”



- “Hey Cardo, radio on”
- “Hey Cardo, radio off ”
- “Hey Cardo, next station”
- “Hey Cardo, previous station”



For Bluetooth intercom only

- “Hey Cardo, call intercom”
- “Hey Cardo, end intercom”



- “Hey Siri”
- “Ok Google”



- “Hey Cardo, volume up”
- “Hey Cardo, volume down”
- “Hey Cardo, mute audio”
- “Hey Cardo, unmute audio”
- “Hey Cardo, mute microphone”
- “Hey Cardo, unmute microphone”



- “Hey Cardo, battery status”



- “Hey Cardo, ANC on”
- “Hey Cardo, ANC off”

Manufacturer: Cardo Systems Ltd.,
101 E. Park Blvd., Suite 600 Plano, TX
75074, USA.

Importer in Europe: SCHUBERTH GmbH
Stegelitzer Strasse 12, 39126 Magdeburg,
Germany

Importer in UK: Tran Am Ltd
William House, Gore Road GB BH25 6RJ
New Milton Hants

Importer in US: SCHUBERTH North
America 9920 Pacific Heights Blvd.,
Suite 150, San Diego, CA 92121

Subject to change. No liability (accepted) for mistakes and print errors

WWW.SCHUBERTH.COM