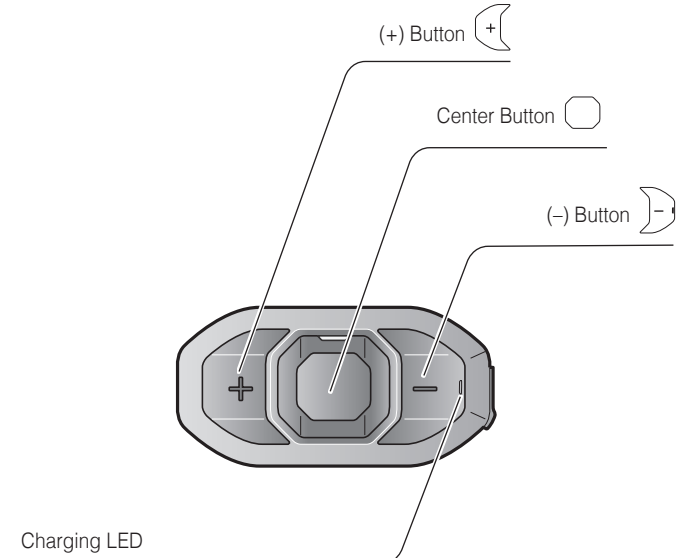
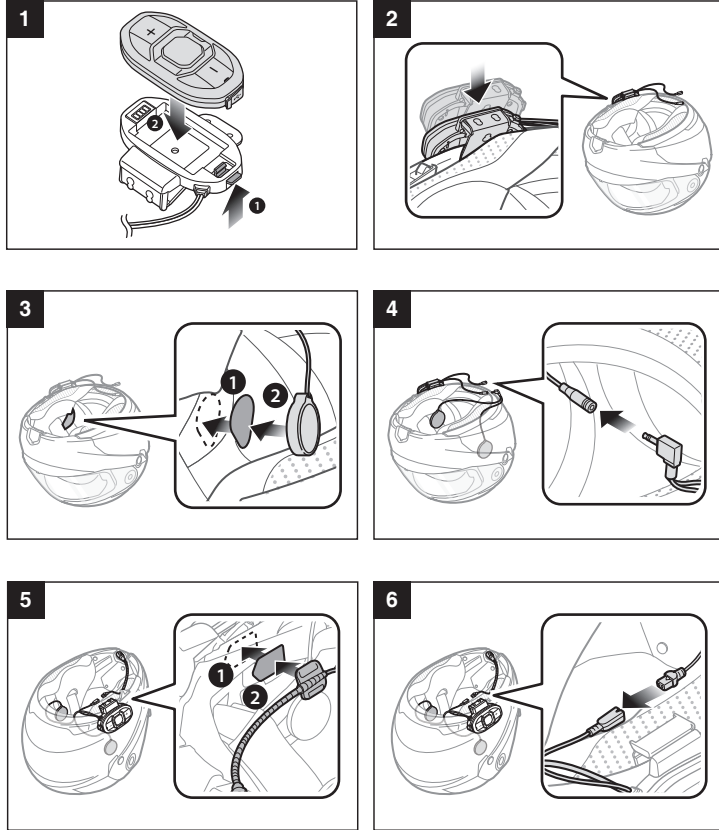


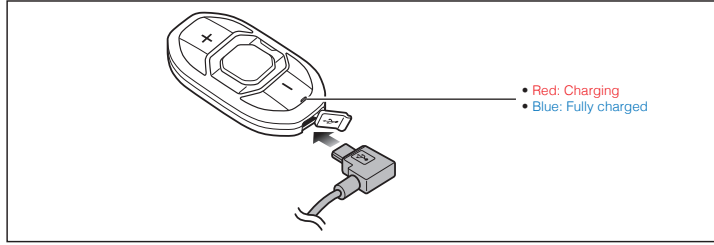
Sena SF4 Quick Start Guide



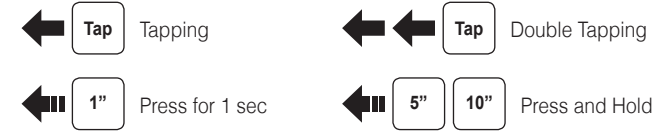
Installation



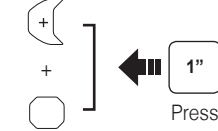
Charging



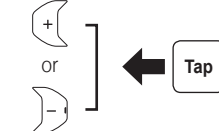
Button Operation



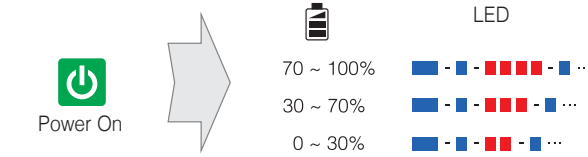
Power On/Off



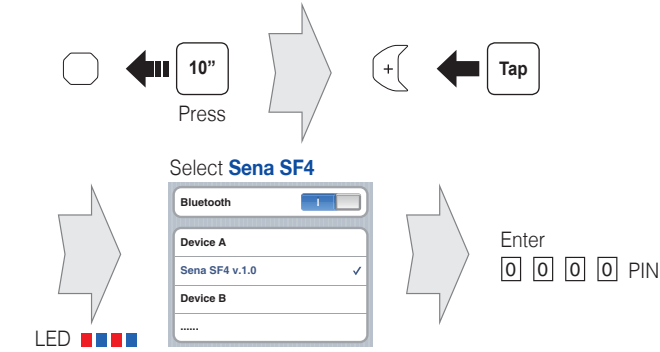
Volume Adjustment



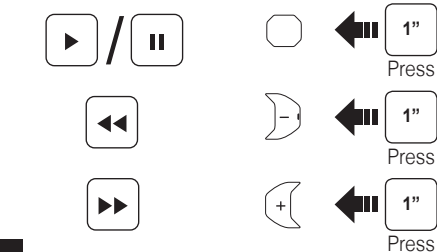
Battery Check



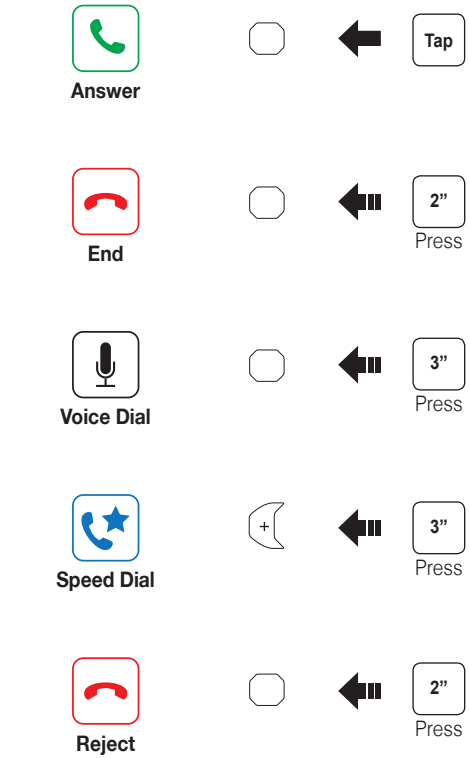
Phone, Music Pairing



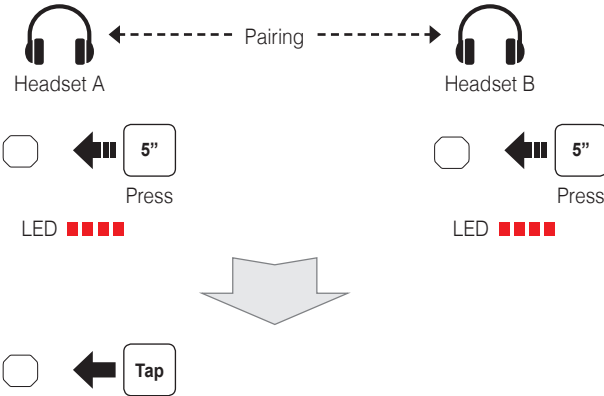
Music Operation



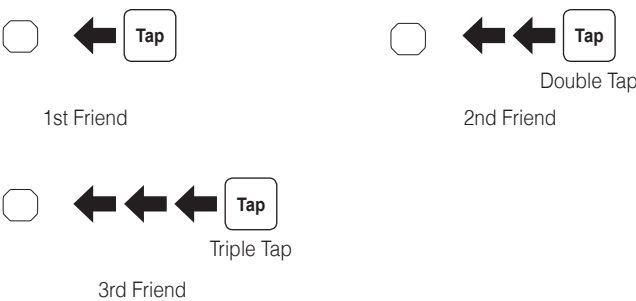
Mobile Phone Call Making and Answering



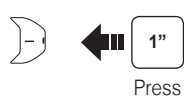
Intercom Pairing



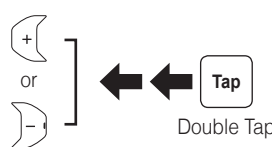
Intercom Start/End



Radio On/Off



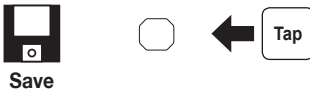
Radio Seek Stations



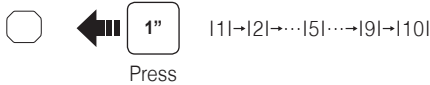
Radio Scan Up FM Band



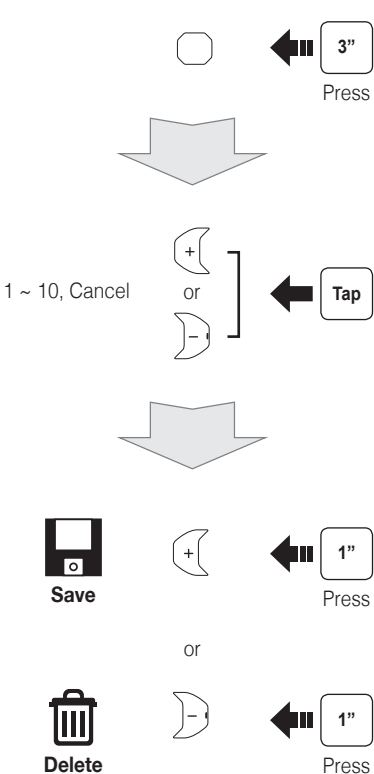
Save to preset while scanning



Radio Move to Preset Station

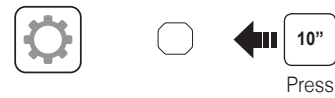


Radio Save or Delete Preset



Setting

Configuration Menu



Using the Sena Device Manager

Connect the headset to your computer via a USB cable. Launch the Sena Device Manager and click **DEVICE SETTING** to configure the headset settings.
For details about downloading the Sena Device Manager, please refer to the leaflet included in the package.

Using the Sena SF Utility App

1. On your smartphone, download the **Sena SF Utility App** for Android or iPhone from Google Play or App Store. Please refer to **Sena.com/SF-app** for more details.
2. Pair your smartphone with the headset.
3. Run the **Sena SF Utility App**. Swipe the screen to the right and tap Setting to configure the headset settings.

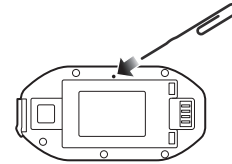
Troubleshooting

Factory Reset

If you want to restore the Sena SF4 to factory default settings, use the Factory Reset in the configuration menu. The headset automatically restores the default settings and turns off.

Fault Reset

If the Sena SF4 is not working properly for any reason, reset by gently pushing the pin-hole reset button on the back of the main unit.



Sena Technologies, Inc.
www.sena.com
Customer Support: support.sena.com
E-mail: support@sena.com