



ACS 10

For Arai Quantic Helmet

MOTORCYCLE BLUETOOTH® COMMUNICATION SYSTEM

HD SPEAKERS

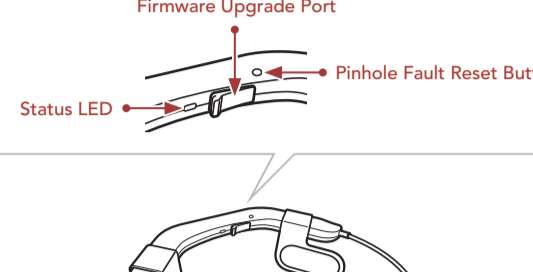
QUICK START GUIDE

1.1.0

ENGLISH

Downloadable Sena Software

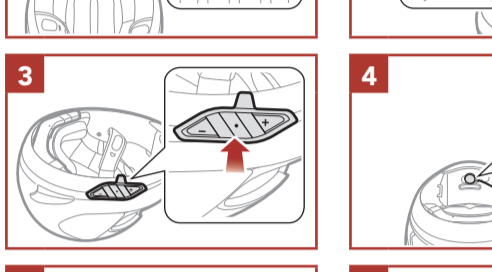
Download the Sena Motorcycles App at [Google Play Store](#) or [App Store](#).



Download the following items at [sena.com](#).

- Firmware**
- Sena Device Manager**
 - Firmware upgrade
 - Device configuration setting
- Quick Start Guide, User's Guide**

Follow us on Facebook, YouTube, Twitter and Instagram to check the latest information and helpful tips.

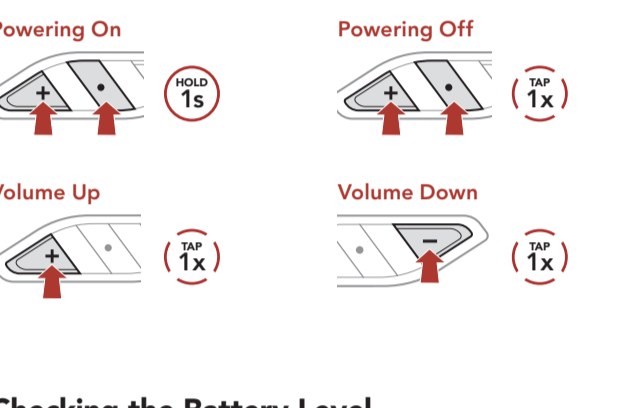
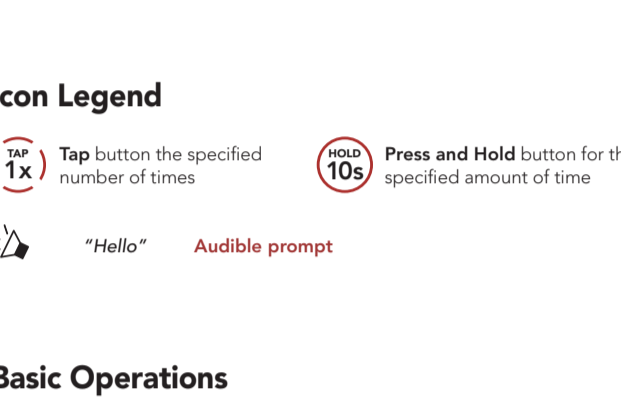


Product Details

DC Power Charging & Firmware Upgrade Port

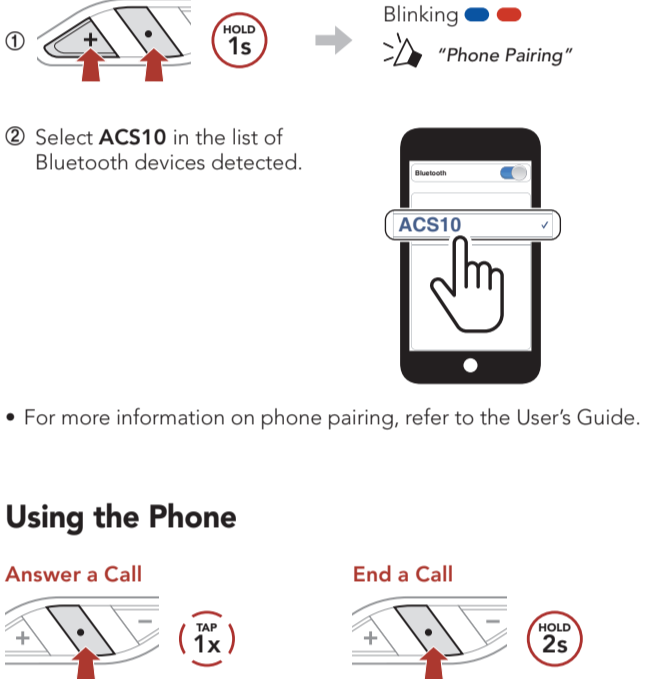
Status LED

Pinhole Fault Reset Button



Installation

- The ACS10 is compatible with **Arai Quantic Helmets**.
- For more information about installation, refer to the **User's Guide**.



Icon Legend

- TAP 1x**: Tap button the specified number of times
- HOLD 10s**: Press and Hold button for the specified amount of time
- "Hello"**: Audible prompt

Basic Operations

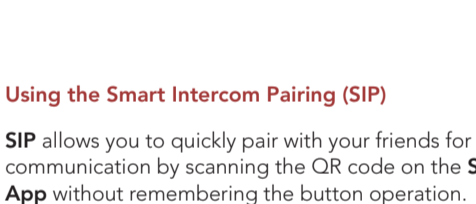
Powering On: TAP (+) 1x, HOLD (+) 1s

Powering Off: TAP (+) 1x, HOLD (+) 10s

Volume Up: TAP (+) 1x

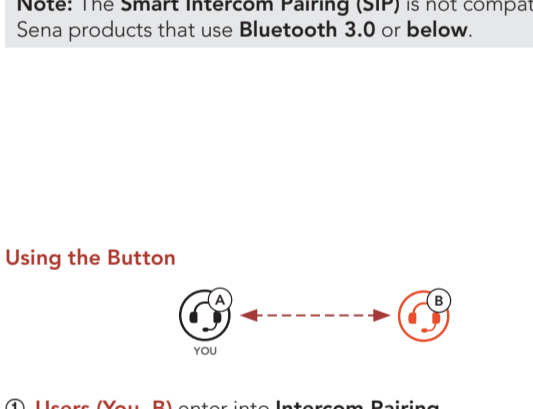
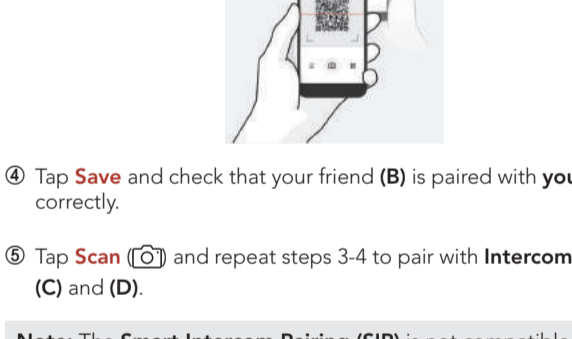
Volume Down: TAP (-) 1x

Checking the Battery Level



Phone Pairing

When you initially turn on the headset:



For more information on phone pairing, refer to the User's Guide.

Using the Phone

Answer a Call: TAP (+) 1x

End a Call: HOLD (+) 2s

Reject a Call: HOLD (+) 2s

Voice Dial: HOLD (+) 3s in stand-by mode

Music Control

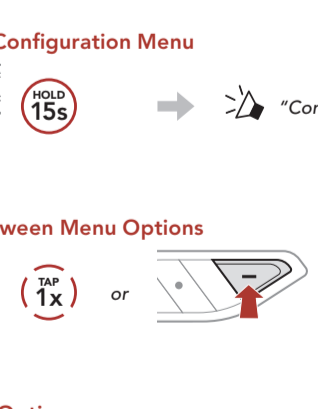
Play/Pause: HOLD (+) 1s

Track Forward: HOLD (+) 1s

Track Backward: HOLD (-) 1s

Bluetooth Intercom

Up to three other people can be paired with the headset for Bluetooth intercom conversations.



Intercom Pairing

There are two ways to pair the headset.

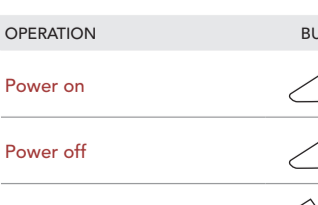
Using the Smart Intercom Pairing (SIP)

SIP allows you to quickly pair with your friends for intercom communication by scanning the QR code on the **Sena Motorcycles App** without remembering the button operation.

- Pair the mobile phone with the headset.
- Open the **Sena Motorcycles App** and tap **Smart Intercom Pairing Menu**.
- Scan the **QR code** displayed on your friend (B)'s mobile phone.
 - Your friend (B) can display the QR code on the mobile phone by tapping **QR code** on the **Sena Motorcycles App**.
- Tap **Save** and check that your friend (B) is paired with you (A) correctly.
- Tap **Scan** and repeat steps 3-4 to pair with **Intercom Friends (C and D)**.

Note: The **Smart Intercom Pairing (SIP)** is not compatible with Sena products that use **Bluetooth 3.0 or below**.

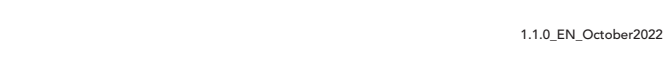
Using the Button



- Users (You, B)** enter into **Intercom Pairing**.
 - Blinking red/blue LEDs and "Intercom Pairing" prompt.
- Tap the **Center Button** on either headset.
 - Turns blue.
 - Confirms intercoms are paired.
- Repeat the steps above to pair with **other headsets (C and D)**.

Last-Come, First-Served

If a headset has multiple paired headsets for intercom conversations, the last paired headset is set as the first intercom friend.



Two-way Intercom

Start/End Conversation with the First Intercom Friend D: TAP (+) 1x

Start/End Conversation with the Second Intercom Friend C: TAP (+) 2x

Start/End Conversation with the Third Intercom Friend B: TAP (+) 3x

Configuration Menu

Accessing the Configuration Menu: HOLD (+) 15s

Navigating Between Menu Options: TAP (+) 1x or TAP (-) 1x

Execute Menu Options: TAP (+) 1x

Troubleshooting

Factory Reset

1. HOLD (+) 15s → "Configuration menu"

2. TAP (-) 2x → "Factory Reset"

3. TAP (+) 1x → "Headset reset, good-bye"

Fault Reset

Note: **Fault Reset** will not restore the headset to the factory default settings.

Quick Reference

TYPE	OPERATION	BUTTON COMMANDS
Basic Operations	Power on	TAP (+) 1x, HOLD (+) 1s
	Power off	TAP (+) 1x, HOLD (+) 10s
	Volume up/down	TAP (+) 1x or TAP (-) 1x
Mobile Phone	Answer phone call	TAP (+) 1x
	End/reject phone call	HOLD (+) 2s
	Voice dial	HOLD (+) 3s
Music	Play/Pause music	HOLD (+) 1s
	Track forward	HOLD (+) 1s
	Track backward	HOLD (-) 1s
Intercom	Intercom pairing	HOLD (+) 5s, TAP (+) 1x
	Start/end intercom	TAP (+) 1x