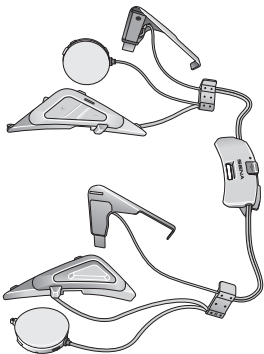


SENA



SRL-MESH

MOTORCYCLE MESH & BLUETOOTH®
COMMUNICATION SYSTEM FOR SHOEI HELMETS

———— SOUND BY ————
harman/kardon®

QUICK START GUIDE

ENGLISH / 1.2.0

Downloadable Sena Software

Download the **Sena Motorcycles App** on **Google Play Store** or **App Store**.



Sena Motorcycles

- Device Configuration Setting

Download the following items at **sena.com**.



Sena Device Manager

- Firmware upgrade
- Device configuration setting



Quick Start Guide, User's Guide

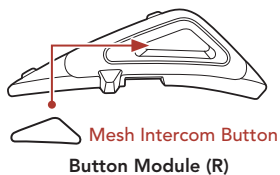
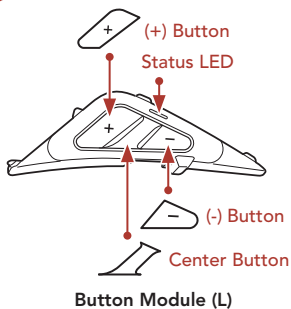
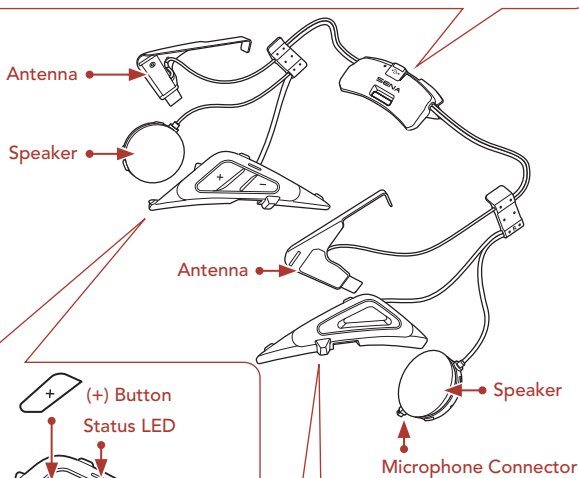
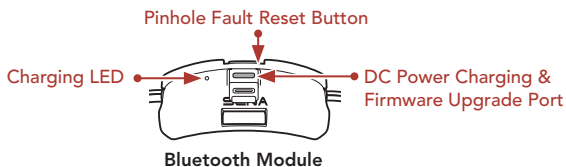
Follow us on Facebook, YouTube, Twitter and Instagram to check the latest information and helpful tips.

SENA



Sena Technologies Co., Ltd.
Customer Support: sena.com

Product Details



Installation

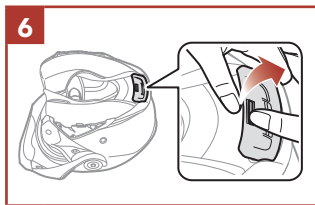
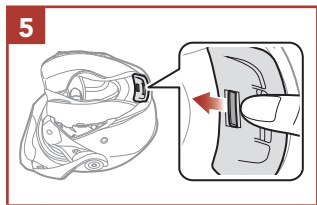
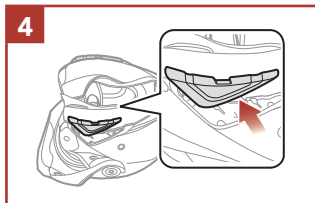
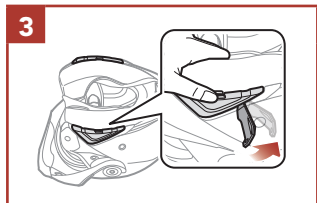
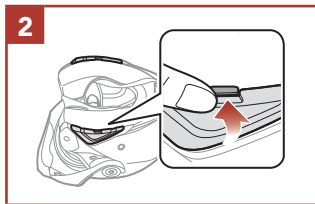
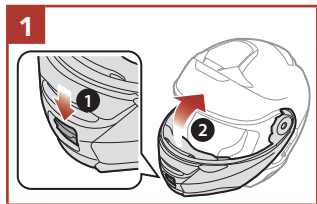
The following **SHOEI helmets** are compatible with the **SRL-Mesh**.

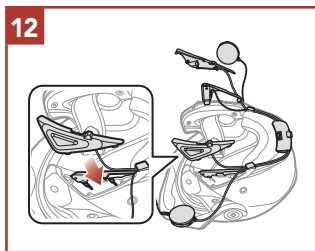
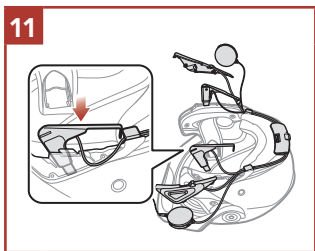
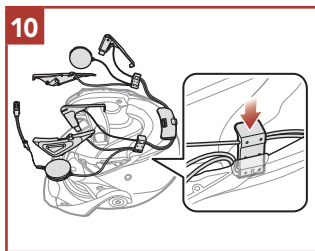
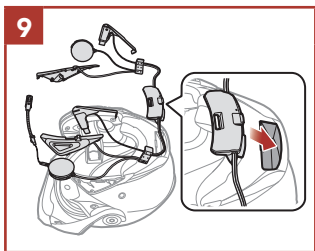
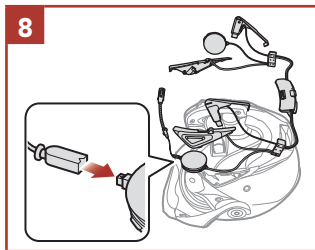
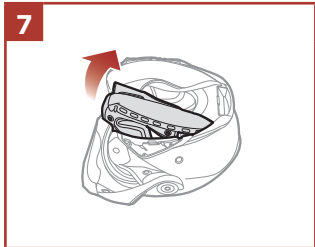
- **GT-Air II, J-Cruise II, Neotec II***

* **Neotec II's** manufactured on and after March 8, 2019.

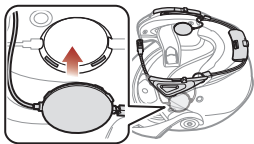
- For more information about installation, refer to the User's Guide.

Flip Up Helmet Installation

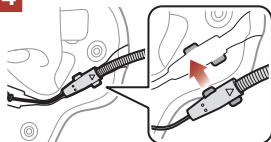




13



14



15



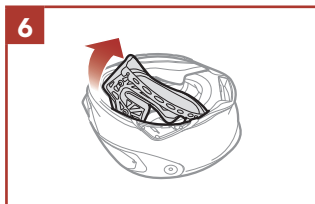
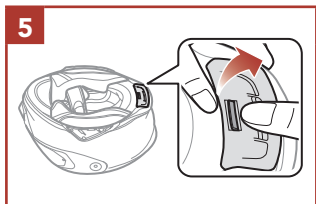
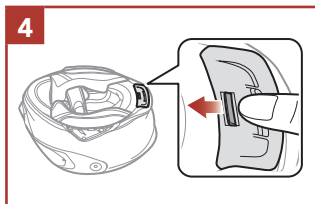
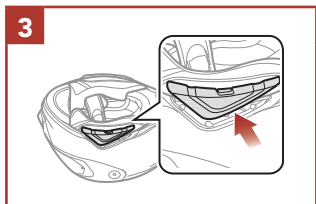
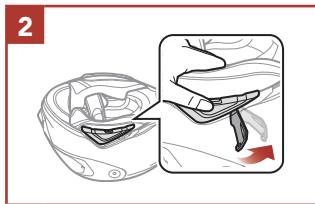
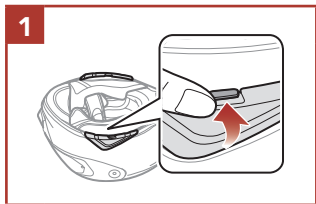
16

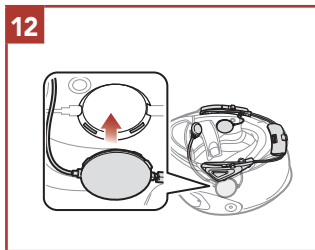
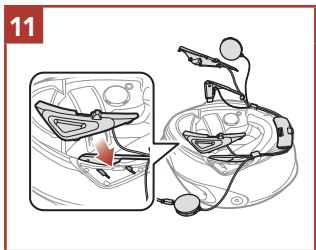
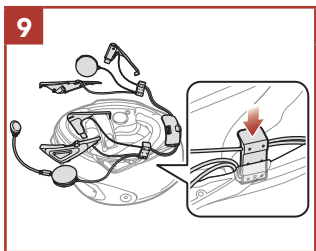
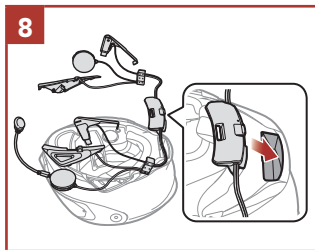
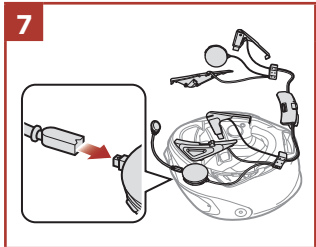


17

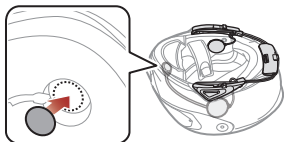


Full Face Helmet Installation

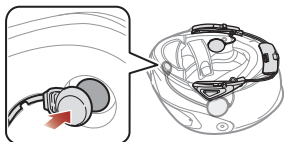




13




14



15



Icon Legend

 Tap button the specified number of times

 Press and Hold button for the specified amount of time



"Hello"

Audible prompt

Basic Operations

Powering On



Powering Off



Volume Up



Volume Down



Checking the Battery Level

Powering On



Phone Pairing



- ③ Select **SRL-Mesh** in the list of Bluetooth devices detected.



- The headset will enter the **Phone Pairing mode** automatically when you **initially turn on** the headset.
- For more information on phone pairing, refer to the User's Guide.

Using the Phone

Answer a Call



End a Call



Reject a Call



Siri and Google Assistant

Activate the Siri or Google Assistant Installed on Your Phone



"Hey Google"
or "Hey Siri"

or



Music Control

Play/Pause



Track Forward



Track Backward



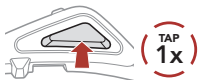
■ Mesh Intercom™

Open Mesh™: communication within the same channel.

Group Mesh™: communication within the same private group.

- For more information on **Mesh Intercom**, refer to the User's Guide.

Mesh Intercom On



Blinking 



"Mesh intercom on,
Open Mesh, channel 1"

Mesh Intercom Off



"Mesh intercom off"

Note: When **Mesh Intercom** is on, the **SRL-Mesh** will automatically connect to nearby **SRL-Mesh** users and the headset will be in **Open Mesh (default: channel 1) initially**.

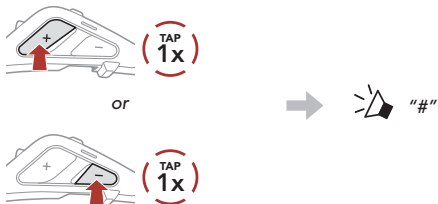
Open Mesh

Channel Setting (Default: channel 1) in Open Mesh

- ① Enter into the **Channel Setting**.



- ② Navigate between channels.
(1 → 2 → ... → 8 → 9 → Exit → 1 → ...)



- ③ Save the channel.



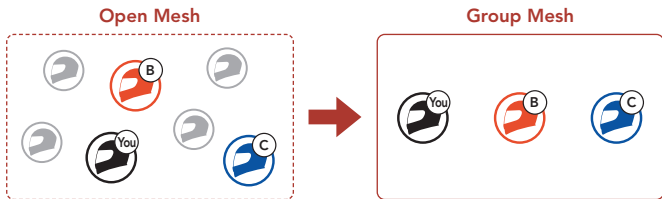
Note: You can use the **Sena Motorcycles App** to change the channel.

Group Mesh

Group Mesh is a closed group intercom function that allows users to join, leave, or rejoin a group intercom conversation without pairing each headset.

1) Creating a Group Mesh

Creating a **Group Mesh** requires **two or more Open Mesh users**.



- ① **Users (You, B, and C)** enter into **Mesh Grouping** to create a **Group Mesh**.

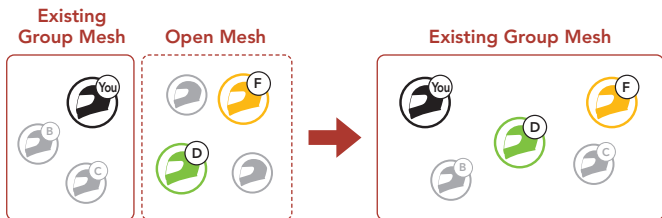


- ② When **Mesh Grouping** is completed, the **users (You, B and C)** will hear a voice prompt on their headsets as **Open Mesh** switches to **Group Mesh**.



2) Joining an Existing Group Mesh

One of the **current users** in an **Existing Group Mesh** can allow **new users (one or more)** in **Open Mesh** to join the **Existing Group Mesh**.



- ① One (**You**) of the **current users** in the **Existing Group Mesh** and **new users (D and F)** in **Open Mesh** enter into **Mesh Grouping** to join the **Existing Group Mesh**.



- ② When **Mesh Grouping** is completed, the **new users (D and F)** will hear a voice prompt on their headsets as **Open Mesh** switches to **Group Mesh**.



■ Enable/Disable Mic (Default: Enable)

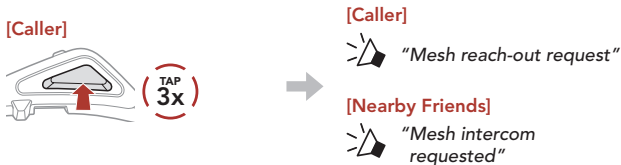
Users can enable/disable the microphone when communicating in a **Mesh Intercom**.



■ Mesh Reach-Out Request

You (caller) can send a request message to turn on the Mesh Intercom to nearby friends who have it turned off.

- ① If you want to send or receive a request message, you need to enable **Mesh Reach-Out** on the **Sena Motorcycles App**.
- ② While your headset's Mesh Intercom is on, you (caller) send a request message using the **headset's Button** or the **Sena Motorcycles App**.



- ③ Friends who receive the request message need to manually turn on their Mesh Intercom using the **headset's Button** or the **Sena Motorcycles App**.

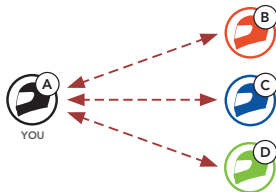
Reset Mesh

If the headset in an **Open Mesh** or **Group Mesh** resets the **Mesh**, it will automatically return to **Open Mesh (default: channel 1)**.



Bluetooth Intercom

Up to three other people can be paired with the headset for Bluetooth intercom conversations.


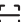



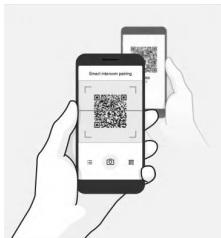
Intercom Pairing


There are two ways to pair the headset.

Using the Smart Intercom Pairing (SIP)

SIP allows you to quickly pair with your friends for intercom communication by scanning the QR code on the **Sena Motorcycles App** without remembering the button operation.

- ① Pair the mobile phone with the headset.
- ② Open the **Sena Motorcycles App** and tap  (**Smart Intercom Pairing Menu**).
- ③ Scan the **QR code** displayed on your friend (**B**)'s mobile phone.
 - Your friend (**B**) can display the QR code on the mobile phone by tapping  > **QR code** () on the **Sena Motorcycles App**.



- ④ Tap **Save** and check that your friend (**B**) is paired with **you (A)** correctly.
- ⑤ Tap **Scan** () and repeat steps 3-4 to pair with **Intercom Friends (C) and (D)**.

Note: The **Smart Intercom Pairing (SIP)** is not compatible with Sena products that use **Bluetooth 3.0** or **below**.

Using the Button



- ① **Users (You, B)** enter into **Intercom Pairing**.



Blinking 
 "Intercom pairing"

- ② The **two headsets (A and B)** will be automatically paired.



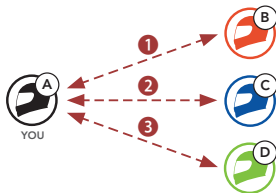
Turns blue 


- ③ Repeat the steps above to pair with **other headsets (C and D)**.

■ Last-Come, First-Served

If the headset has multiple paired headsets for intercom conversations, the last paired headset is set as the **First Intercom Friend**.

Intercom Pairing Order



Last-Come, First-Served



Two-way Intercom

Start/End Conversation with the First Intercom Friend D



Start/End Conversation with the Second Intercom Friend C



Start/End Conversation with the Third Intercom Friend B



FM Radio

FM Radio On/Off



Start/Stop Scanning



Seek Forward



Seek Backward



Navigating Preset Stations



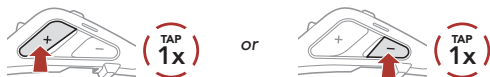
Note: You can also save the current station from the **Sena Motorcycles App**.

Configuration Menu

Accessing the Configuration Menu



Navigating Between Menu Options

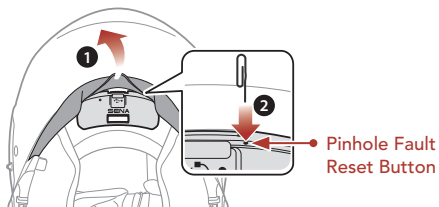


Execute Menu Options



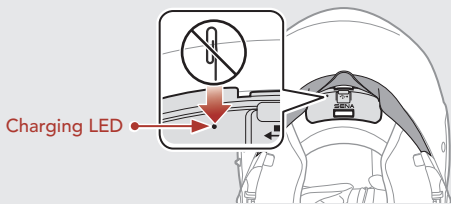
Troubleshooting

Fault Reset



Note:

- **Fault Reset** will not restore the headset to factory default settings.
- The charging LED is not the **Pinhole Fault Reset Button**. Do not press it.



Factory Reset



"Configuration menu"





























"Factory reset"


















"Headset reset,
good-bye"

Quick Reference

TYPE	OPERATION	BUTTON COMMANDS
 Basic Operations	Power on/ Power off	  
		  
	Volume up/Volume down	 + or -  
 Mobile Phone	Answer phone call	 
	End phone call	 
	Reject phone call	 
 Siri and Google Assistant	Activate the Siri or Google Assistant	 

TYPE	OPERATION	BUTTON COMMANDS
 Mesh Intercom™	Mesh Intercom on/off	 (TAP 1x)
	Channel setting	 (TAP 2x)
	Mesh Grouping	 (HOLD 5s)
	Enable/Disable Mic	 (HOLD 1s)
	Mesh Reach-Out Request	 (TAP 3x)
	Reset Mesh	 (HOLD 8s)
 Intercom	Intercom pairing	 (HOLD 5s)
	Start/End intercom	 (TAP 1x)

TYPE	OPERATION	BUTTON COMMANDS
 Music	Play/Pause music	 
	Track forward	 
	Track backward	 
 FM Radio	FM radio on/off	 
	Select preset	 
	Seek forward/backward	 or  
	Scan up FM band/ stop scanning	