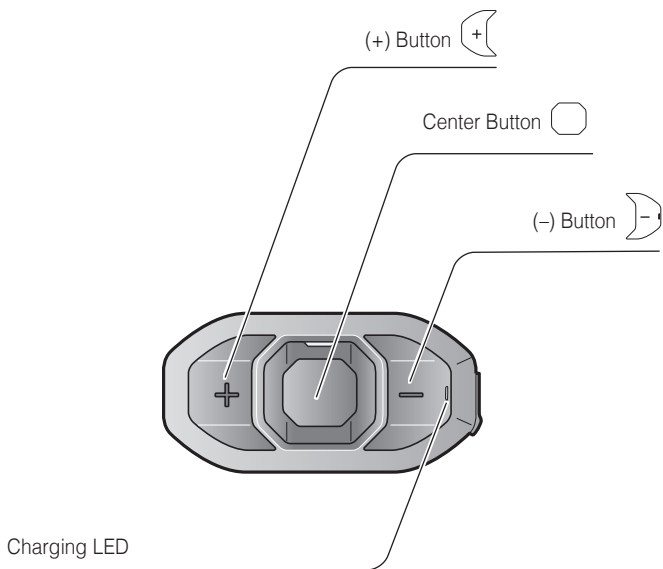
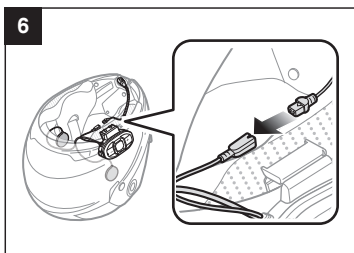
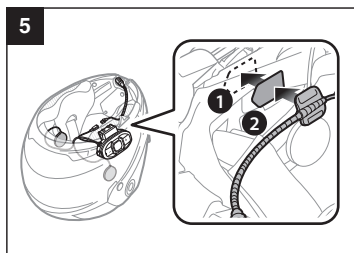
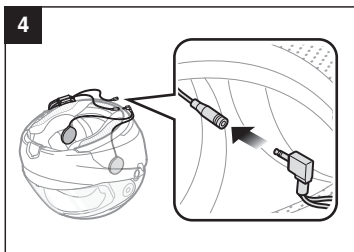
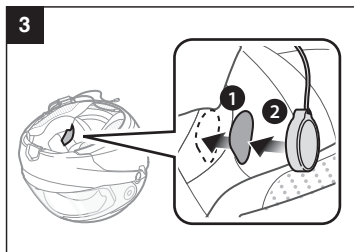
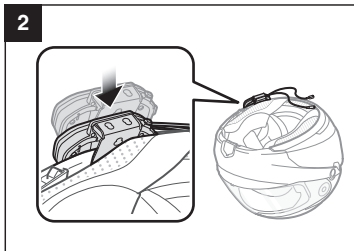
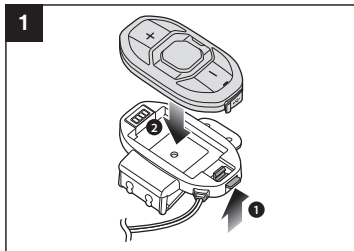


# Sena SF4 Quick Start Guide

ENGLISH



# Installation



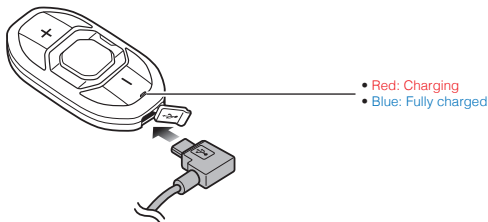
## Sena Motorcycles App

- Download
  - Android: Google Play Store > **Sena Motorcycles**
  - iOS: App Store > **Sena Motorcycles**

## Sena Device Manager

The **Sena Device Manager** allows you to upgrade the firmware and configure its settings directly from your PC or Apple computer. Download the **Sena Device Manager** from [sena.com](http://sena.com).

## Charging



## Button Operation



Tapping



Double Tapping



Press for 1 sec



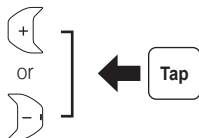
Press and Hold

## Power On/Off



Press

## Volume Adjustment



Tap

## Battery Check



Power On



LED

70 ~ 100%



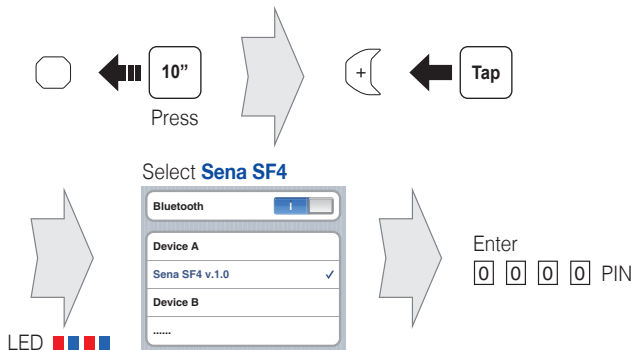
30 ~ 70%



0 ~ 30%

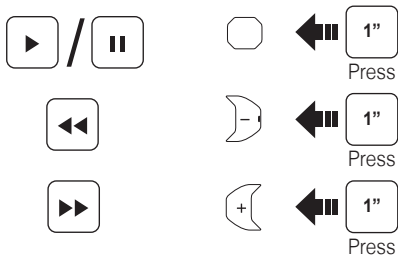


## Phone, Music Pairing



- The headset will enter the Phone Pairing mode automatically when you initially turn on the headset.
- For more information on phone pairing, refer to the User's Guide.

## Music Operation



# Mobile Phone Call Making and Answering



Answer



Tap



End



2"

Press



Call a Voice Assistant



3"

Press



Speed Dial



3"

Press



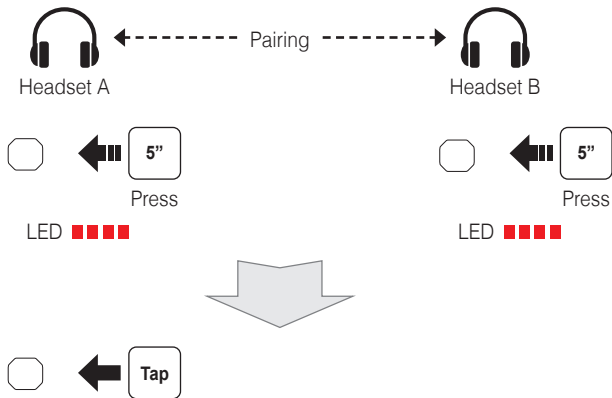
Reject



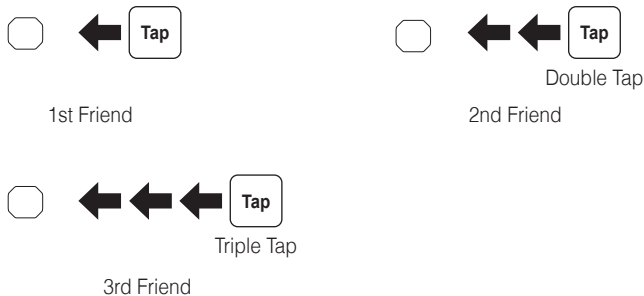
2"

Press

## Intercom Pairing



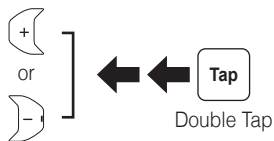
## Intercom Start/End



## Radio On/Off



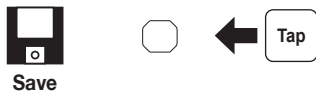
## Radio Seek Stations



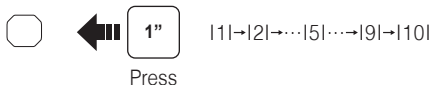
## Radio Scan Up FM Band



Save to preset while scanning



## Radio Move to Preset Station





## Radio Save or Delete Preset



Press



1 ~ 10, Cancel



or



Save



Press

or



Delete



Press

## Setting

### Configuration Menu



10"

Press

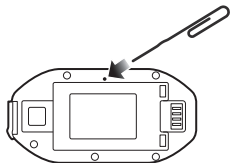
## Troubleshooting

### Factory Reset

If you want to restore the Sena **SF4** to factory default settings, use the Factory Reset in the configuration menu. The headset automatically restores the default settings and turns off.

### Fault Reset

If the Sena **SF4** is not working properly for any reason, reset by gently pushing the pin-hole reset button on the back of the main unit.



**SENA**



Sena Technologies Co., Ltd.

Customer Support : [sena.com](http://sena.com)

# SF Series Quick Reference

Type	Operation	Button Command	LED
Basic Function	Power on	Press the Center Button and the (+) Button for 1 second	Solid blue
	Power off	Tap the Center Button and the (+) Button	Solid red
	Volume adjustment	Tap the (+) Button or the (-) Button	-
	Microphone Mute	Press the Center Button and the (-) Button for 1 second	-
Mobile Phone	Answer mobile phone call	Tap the Center Button	-
	End mobile phone call	Press the Center Button for 2 seconds	-
	Call a Voice Assistant	Press the Center Button for 3 seconds	-
	Speed dial	Press the (+) Button for 3 seconds	-
	Reject incoming call	Press the Center Button for 2 seconds	-
Intercom	Intercom pairing	Press the Center Button for 5 seconds	Red flashing
		Tap the Center Button of any one of the two headsets	
	Start/End each intercom	Tap the Center Button	-
	End all intercoms**	Press the Center Button for 3 seconds	-
	Start Group Intercom**	Tap the (+) Button and the (-) Button at the same time	Green flashing
End Group Intercom**	Press the Center Button for 3 seconds	-	
Music	Play/Pause Bluetooth music	Press the Center Button for 1 second	-
	Track forward/back	Press the (+) Button or the (-) Button for 1 second	-
FM Radio**	FM radio on/off	Press the (-) Button for 1 second	-
	Select preset	Press the Center Button for 1 second	-
	Seek stations	Double tap the (+) Button or the (-) Button	-
	Scan up FM band	Press the (+) Button for 1 second	-
	Stop scanning	Press the (+) Button for 1 second	-
	Save preset while scanning	Tap the center Button	-

\*\* Available only in SF4