



USER GUIDE

Firmware Version: 2.3.x

Last updated on Dec 13, 2024

SPIIDER RT1

MOTORCYCLE MESH COMMUNICATION SYSTEM



The firmware version 2.3.x indicates that this manual is applicable to all firmware updates within the version 2.3 series.

TABLE OF CONTENTS

1.	ABOUT THE SPIDER RT1	5
1.1	Product Features	5
1.2	Product Details	6
1.3	Package Contents	7
2.	INSTALLING THE HEADSET ON YOUR HELMET	8
2.1	Installing the Main Unit	8
2.1.1	Using the Hook and Loop Fasteners for Main Unit	8
2.1.2	Using the Double Sided Adhesive Tapes for Main Unit	9
2.1.3	Using the Clamp for Main Unit	9
2.2	Installing the Speakers	10
2.3	Installing the Microphones	11
2.3.1	Using the Wired Boom Microphone	11
2.3.2	Using the Wired Microphone	12
2.4	External Mesh Intercom Antenna	13
3.	GETTING STARTED	14
3.1	Downloadable Sena Software	14
3.1.1	Sena Motorcycles App	14
3.1.2	Sena Device Manager	14
3.2	Charging	14
3.3	Legend	15
3.4	Powering On and Off	15
3.5	Volume Adjustment	15
3.6	Checking the Battery Level	15
4.	PAIRING THE HEADSET WITH OTHER BLUETOOTH DEVICES	16
4.1	Phone Pairing	16

4.2	Second Mobile Phone Pairing	17
4.3	GPS Pairing	17
5.	MOBILE PHONE USAGE	18
5.1	Making and Answering Calls	18
5.2	Speed Dialing	18
5.2.1	Assigning Speed Dial Presets	18
5.2.2	Using Speed Dial Presets	18
5.3	HD Voice (Always On)	19
6.	STEREO MUSIC	20
6.1	Playing Music with Bluetooth Devices	20
7.	MESH INTERCOM	21
7.1	What is Mesh Intercom?	21
7.1.1	Open Mesh	22
7.1.2	Group Mesh	22
7.2	Starting Mesh Intercom	23
7.3	Mesh Version Switch	23
7.4	Using the Mesh in Open Mesh	23
7.4.1	Channel Setting (Default: channel 1)	23
7.5	Using Mesh in Group Mesh	24
7.5.1	Creating a Group Mesh	24
7.5.2	Joining an Existing Group Mesh	25
7.6	Enable/Disable Mic (Default: Enable)	26
7.7	Toggling Open Mesh/Group Mesh	26
7.8	Mesh Reach-Out Request	27
7.9	Reset Mesh	27
8.	MESH AUDIO MULTITASKING (ALWAYS ON)	28

9.	FUNCTION PRIORITY AND FIRMWARE UPDATE	29
9.1	Function Priority	29
9.2	Firmware Update	29
10.	CONFIGURATION SETTING	30
10.1	Headset Configuration Menu	30
10.1.1	Remote Control Pairing	30
10.2	Software Configuration Setting	31
10.2.1	Language	31
10.2.2	Mesh Reach-Out (Default: Disable)	31
10.2.3	Equalizer (Default: Off)	31
10.2.4	VOX Phone (Default: Enable)	31
10.2.5	VOX Sensitivity (Default: 3)	31
10.2.6	Intercom-Audio Overlay Sensitivity (Default: 3)	32
10.2.7	Audio Overlay Volume Management (Default: Disable)	32
10.2.8	Voice Prompt (Default: Enable)	32
10.2.9	Advanced Noise Control™ (Always On)	32
11.	TROUBLESHOOTING	33
11.1	Fault Reset	33
11.2	Factory Reset	33

1. ABOUT THE SPIDER RT1

1.1 Product Features



- Mesh Intercom 3.0 - delivers improved sound quality, a more robust connection, and extended talk time
- Dual version Mesh - Mesh 2.0 for backward compatibility



Audio Multitasking™



Advanced Noise Control™

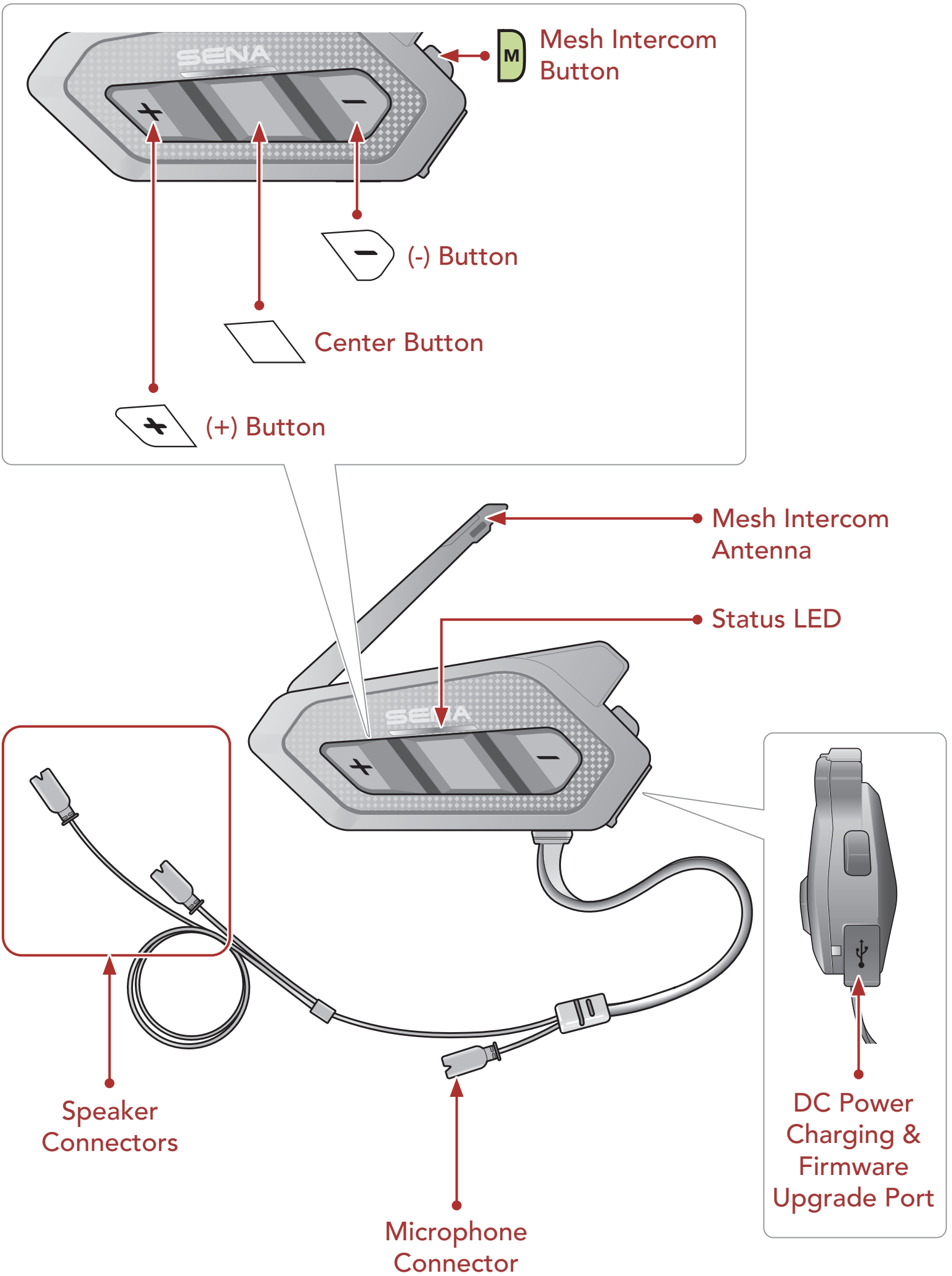


Bluetooth® 5.2

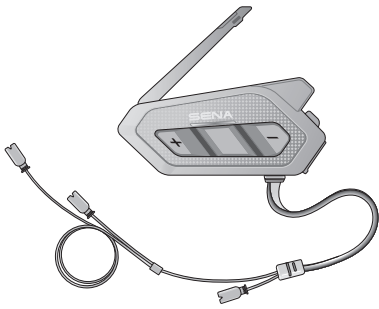


Over-The-Air (OTA) Firmware Update

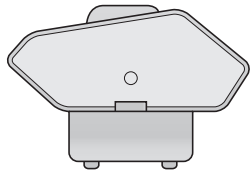
1.2 Product Details



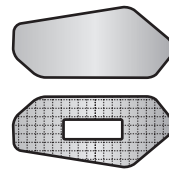
1.3 Package Contents



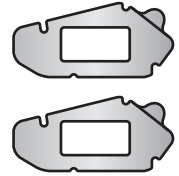
Headset
Main Unit



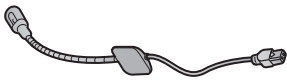
Clamp



Hook and Loop
Fasteners for
Main Unit



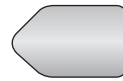
Double Sided
Adhesive Tapes
for Main Unit



Wired Boom
Microphone



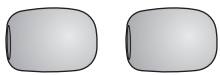
Wired
Microphone



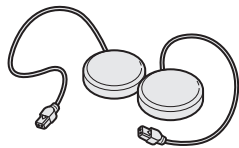
Hook and Loop
Fastener for
Boom
Microphone



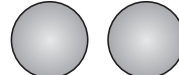
Hook and
Loop Fastener
for Wired
Microphone



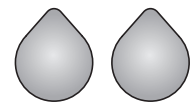
Microphone
Sponges



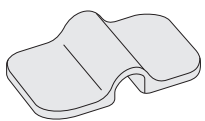
Speakers



Speaker Pads



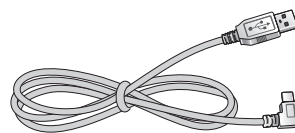
Hook and Loop
Fasteners for
Speakers



Boom Microphone
Holder



Hook and Loop
Fastener for Holder



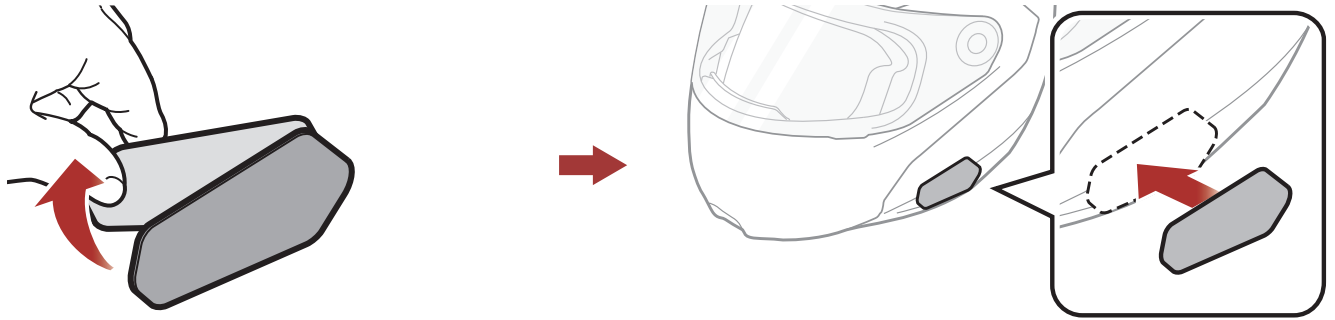
USB Power &
Data Cable
(USB-C)

2. INSTALLING THE HEADSET ON YOUR HELMET

2.1 Installing the Main Unit

2.1.1 Using the Hook and Loop Fasteners for Main Unit

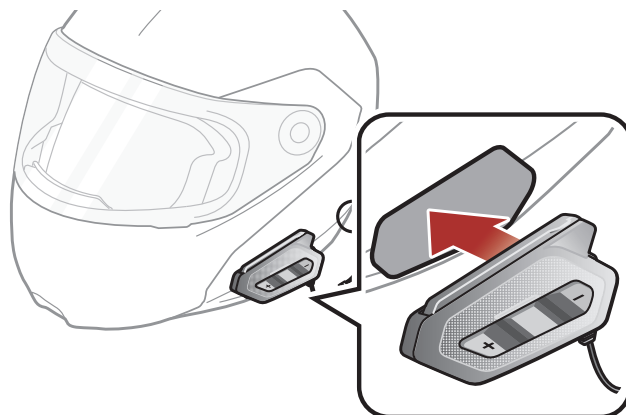
1. Clean the area on the left side of the helmet where you will attach the hook and loop fasteners for main unit with a moistened towel and dry thoroughly.
2. Peel off the cover of the adhesive tape of the loop fastener for main unit and attach it to the helmet.



3. Peel off the cover of the adhesive tape of the hook fastener for main unit and attach it to the back plate of the main unit.



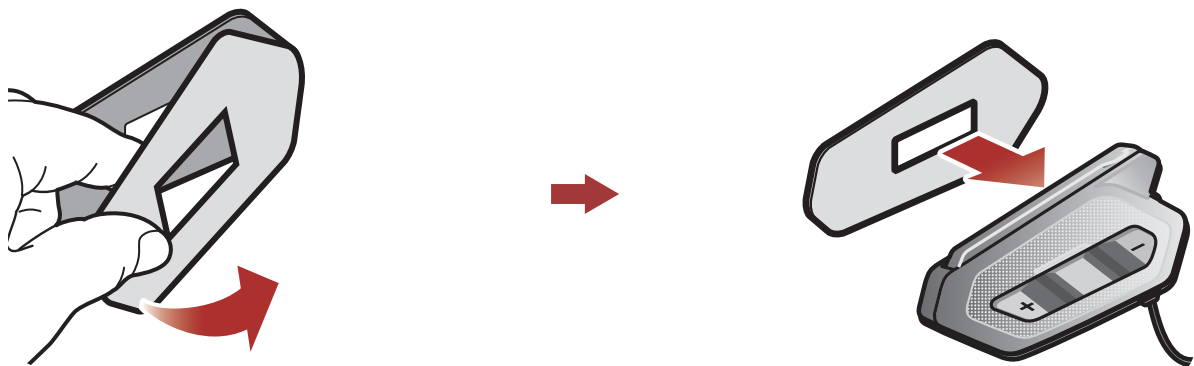
4. Attach the main unit using the hook and loop fasteners that you fitted. Make sure that the main unit is firmly attached to the helmet.



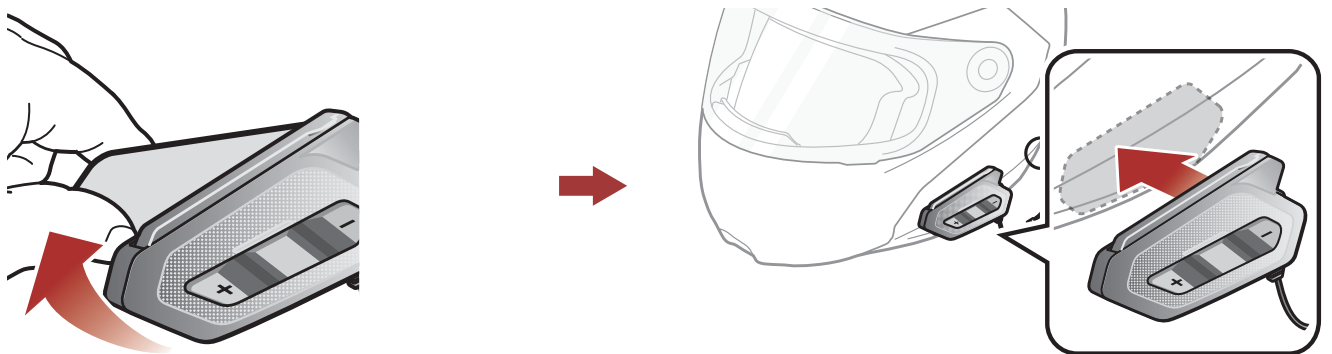
2.1.2 Using the Double Sided Adhesive Tapes for Main Unit

If you cannot attach the hook and loop fasteners to the helmet, you can use double sided adhesive tape.

1. Clean the area on the left side of the helmet where you will attach the double sided adhesive tapes with moistened towel and dry thoroughly.
2. Peel off the cover from one side of the double sided adhesive tapes for main unit and attach it to the back plate of the main unit.



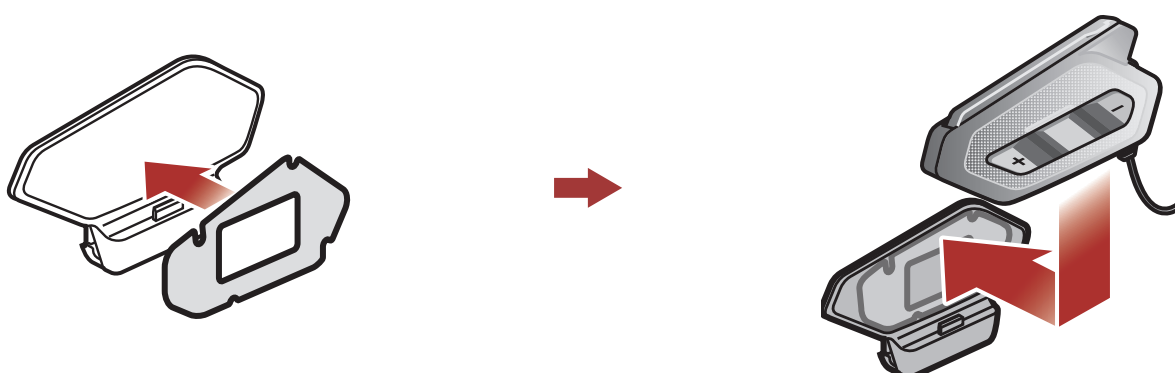
3. Peel off the cover from the other side of the double sided adhesive tapes and attach the main unit on the left side of your helmet.



4. Make sure that the main unit sticks on the helmet firmly. Maximum adhesion occurs after 24 hours.

2.1.3 Using the Clamp for Main Unit

1. Clean the area on the back plate of clamp where you will attach the double sided adhesive tapes with moistened towel and dry thoroughly.
2. Peel off the cover from one side of the double sided adhesive tapes for main unit and attach it to the back plate of the main unit.

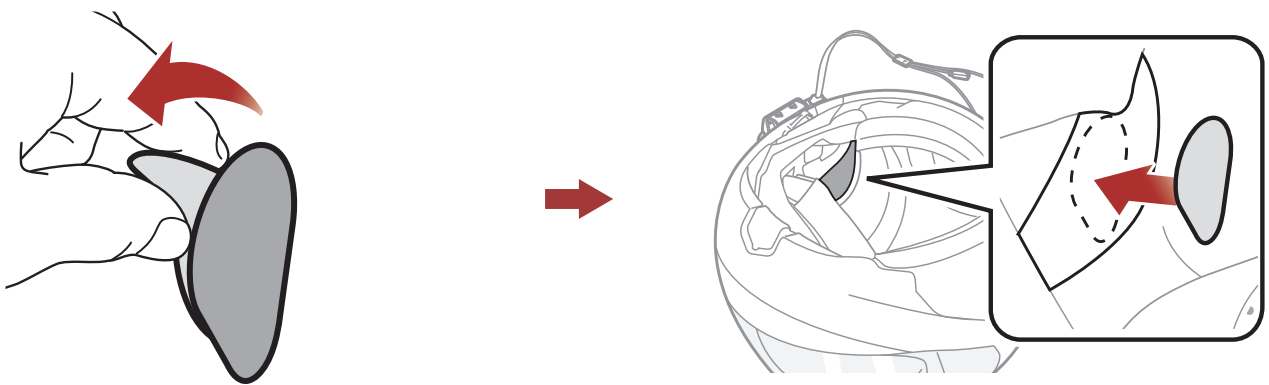


3. Insert the back plate of the clamp between the internal padding and external shell on the left side of the helmet.

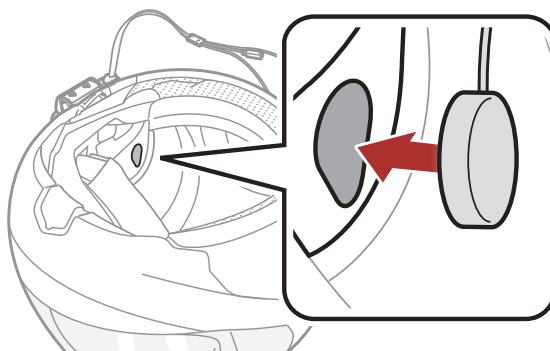


2.2 Installing the Speakers

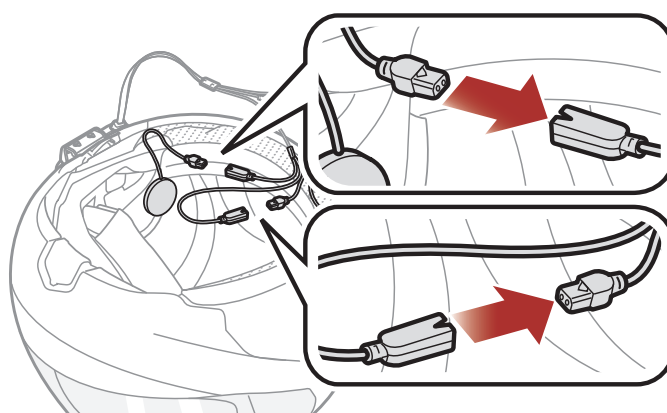
1. Peel off each cover of the hook and loop fasteners for speakers to expose the adhesive surface. Then, attach the fasteners to the ear pockets inside the helmet.



2. Attach the speakers to the hook and loop fasteners for speakers inside the helmet.



3. Align the arrows on the main unit and speaker cables and insert speaker cables into each speaker connector.



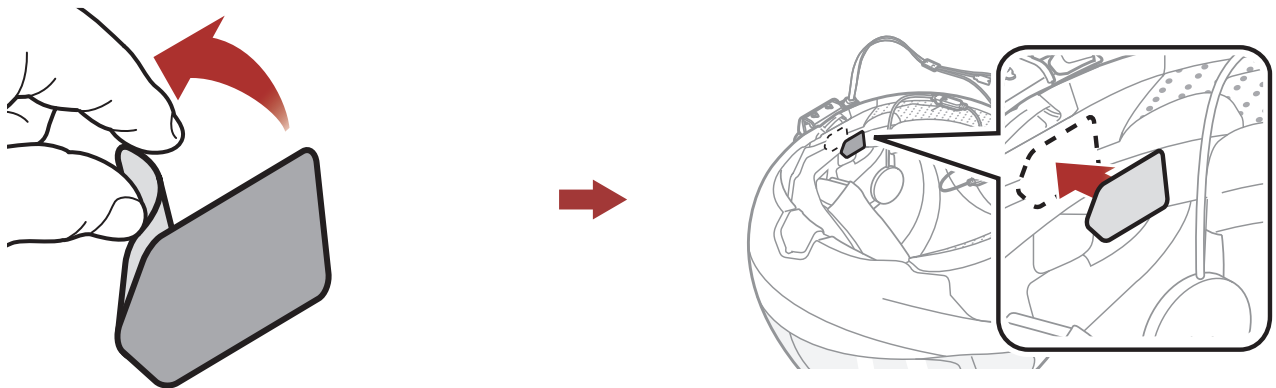
Note:

- The cable for the speakers has two leads. The longer lead is for the right speaker and the shorter lead is for the left speaker.
- If the helmet has deep ear pockets, you can use the speaker pads to bring the speakers closer to your ears.

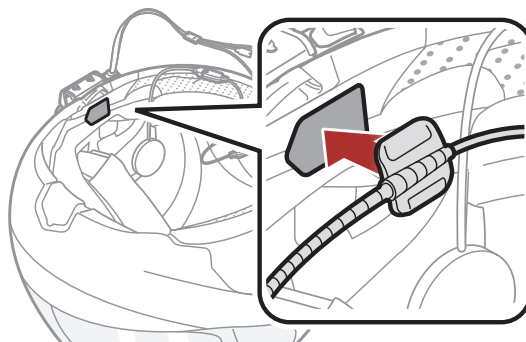
2.3 Installing the Microphones

2.3.1 Using the Wired Boom Microphone

1. Peel off the cover of the hook and loop fastener for wired boom microphone to expose the adhesive tape. Then, attach the hook and loop fastener on the inside surface of the left external shell.

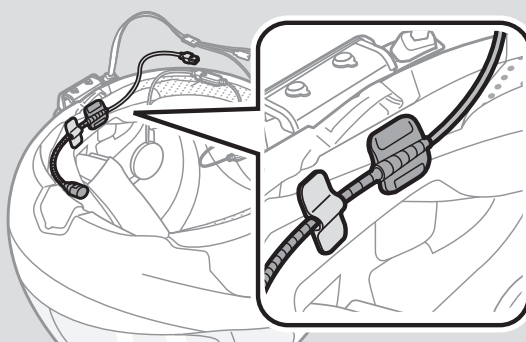


2. Attach the wired boom microphone's mounting plate to the hook and loop fastener.

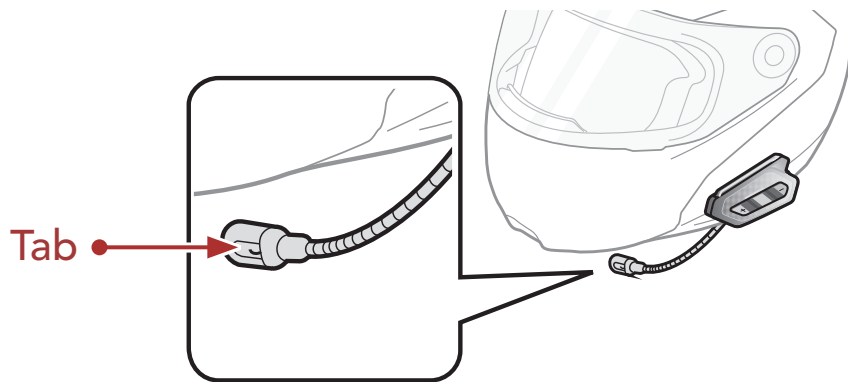


Note:

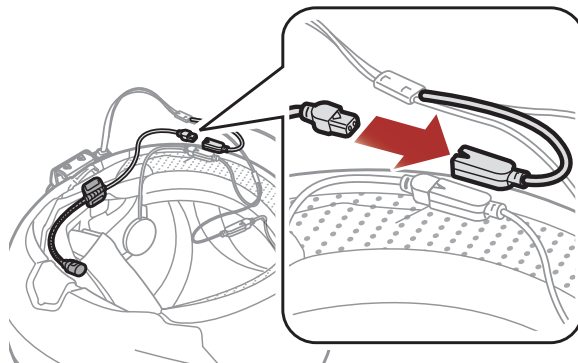
- After you install the wired boom microphone, make sure you reinstall the helmet's internal padding.
- You can use the boom microphone holder after attaching the hook and loop fastener for boom microphone holder on it to ensure secure installation.



3. Make sure that the microphone's receiver is located near your mouth.
4. Adjust the head of the microphone so that the tab is facing away from your mouth.



5. Align the arrows on the main unit and microphone cables and insert the microphone cable into the microphone connector.

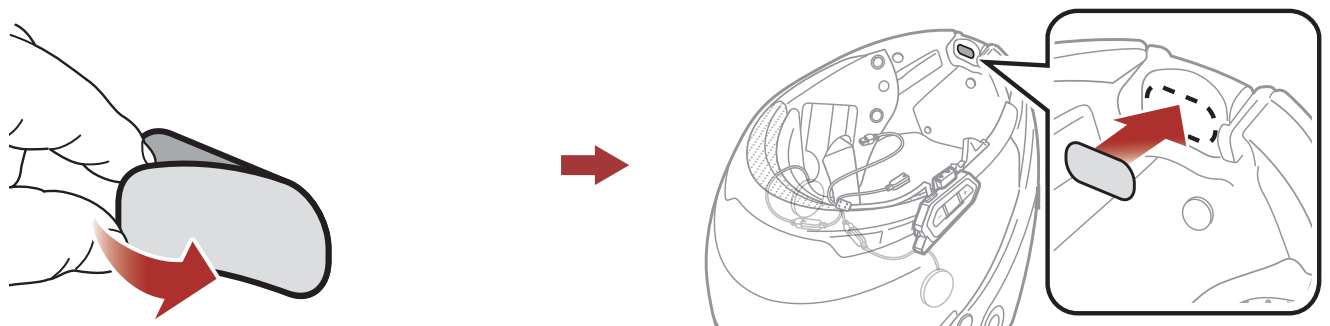


Note: The shortest cable is for the microphone.

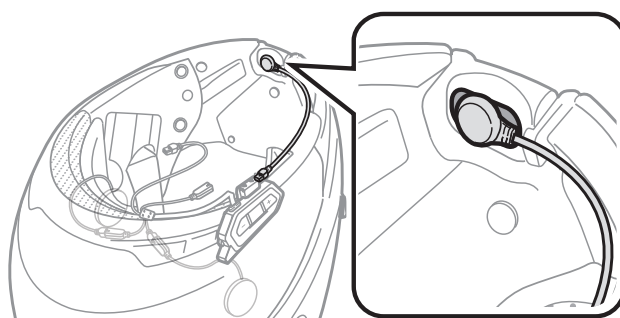
2.3.2 Using the Wired Microphone

If you have a full face helmet, you can use the wired microphone.

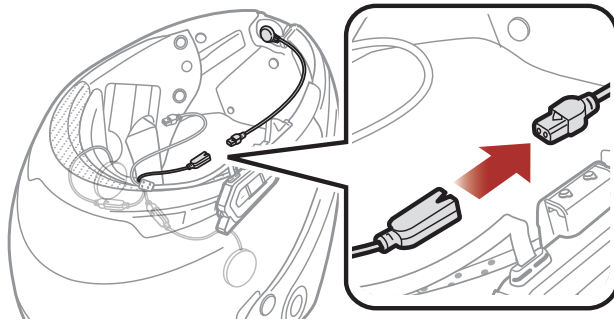
1. Peel off the cover of the hook and loop fastener for wired microphone to expose the adhesive tape. Then, attach the hook and loop fastener on the inside of the helmet's chin guard.



2. Attach the wired microphone to the hook and loop fastener for wired microphone.



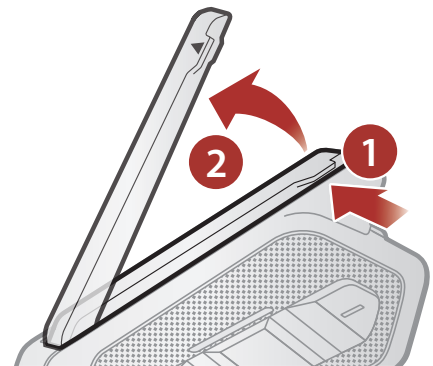
3. Align the arrows on the main unit and microphone cables and insert the microphone cable into the microphone connector.



Note: The shortest cable is for the microphone.

2.4 External Mesh Intercom Antenna

Pull the Mesh Intercom Antenna inwards slightly to unfold it.



3. GETTING STARTED

3.1 Downloadable Sena Software

3.1.1 Sena Motorcycles App

Download the **Sena Motorcycles App** on **Google Play Store** or **App Store**.

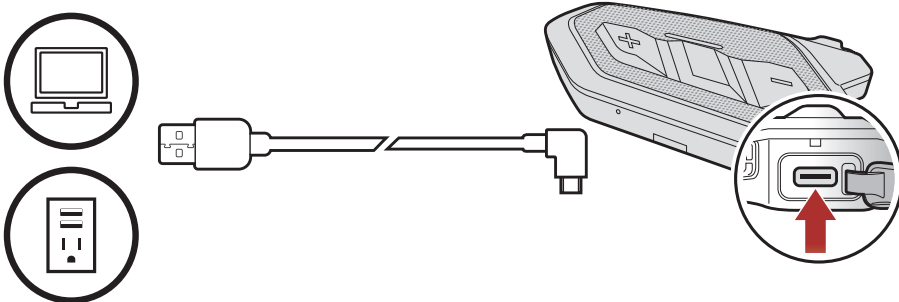


3.1.2 Sena Device Manager

Download the **Sena Device Manager** at sena.com.

3.2 Charging

Charging the Headset



Depending upon the charging method, the headset will be fully charged in about 2.5 hours.

Note:

- The headset includes a **Fast Charging** feature which allows it to charge quickly over a short period of time. For example, a user can get up to 2.0 hours of Mesh communication after charging the headset for 20 minutes.
- Any 3rd party USB charger can be used with Sena products if the charger is approved by either the FCC, CE, IC or other locally approved agencies.
- Use of a non-approved charger may cause fire, explosion, leakage, and other hazards which may also reduce the life time or performance of the battery.

3.3 Legend

 **Tap** button the specified number of times

 **Press and Hold** button for the specified amount of time

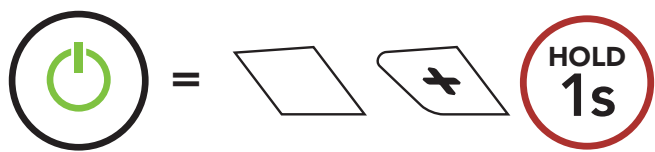


"Hello"

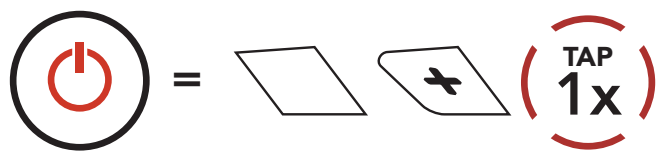
Audible prompt

3.4 Powering On and Off

Powering On



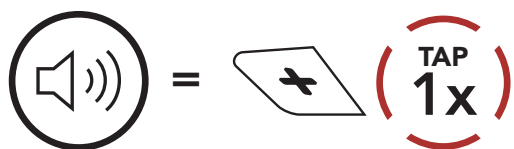
Powering Off



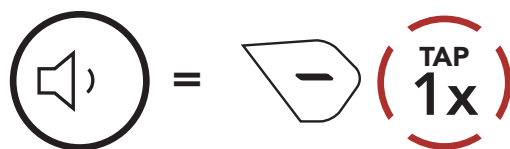
3.5 Volume Adjustment

You can raise or lower the volume by tapping the **(+) Button** or the **(-) Button**. Volume is set and maintained independently at different levels for each audio source (i.e., phone, intercom), even when the headset is rebooted.

Volume Up



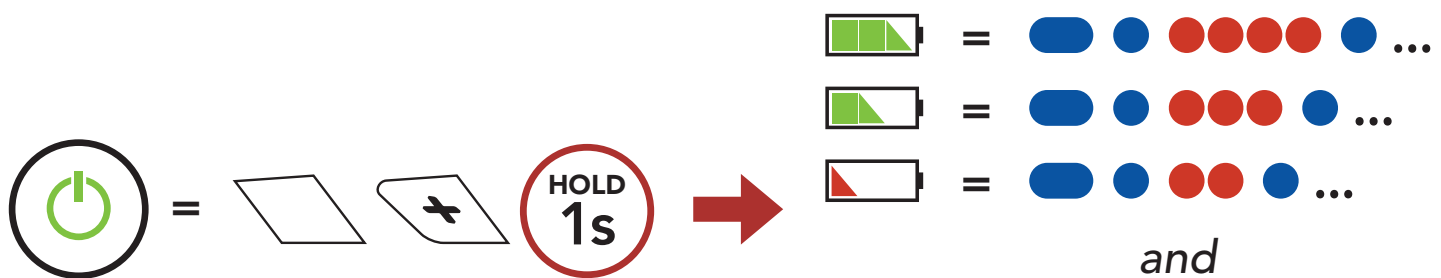
Volume Down



3.6 Checking the Battery Level

Instructions are for when powering the headset on.

Powering On



 *"Battery level is high/medium/low"*

Note: When the battery is low while in use, you will hear a voice prompt saying **"Low battery."**

4. PAIRING THE HEADSET WITH OTHER BLUETOOTH DEVICES

When using the headset with other Bluetooth devices for the first time, they will need to be “paired.” This enables them to recognize and communicate with one another whenever they are within range.

The headset can pair with multiple Bluetooth devices such as a mobile phone or GPS via **Mobile Phone Pairing**, **Second Mobile Phone Pairing** and **GPS Pairing**.

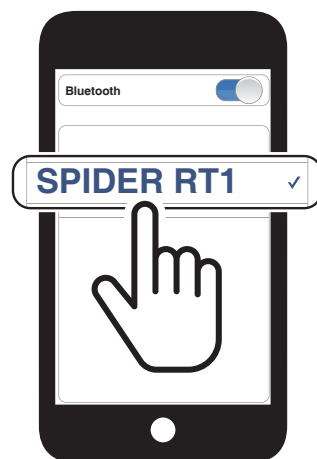


4.1 Phone Pairing

1. While the headset is on, press and hold the **Center Button** for **5 seconds**.



2. Select **SPIDER RT1** in the list of Bluetooth devices detected. If your mobile phone asks for a PIN, enter 0000.

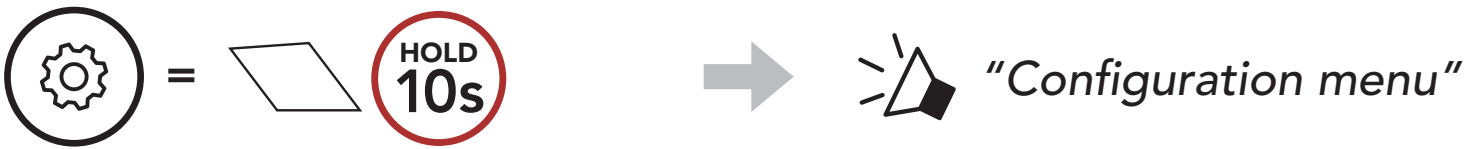


Note:

- When you turn on the SPIDER RT1 for the first time or reboot it after a factory reset, the SPIDER RT1 will automatically enter phone pairing mode.
- To cancel phone pairing, press any button.

4.2 Second Mobile Phone Pairing

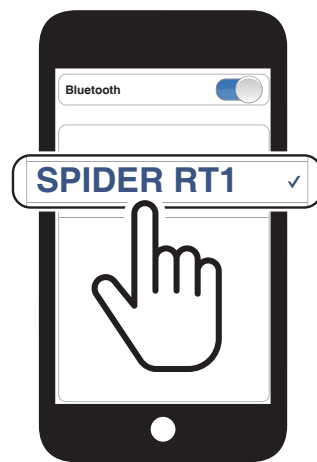
1. Press and hold the **Center Button** for **10 seconds**.



2. Tap the **(+) Button**.

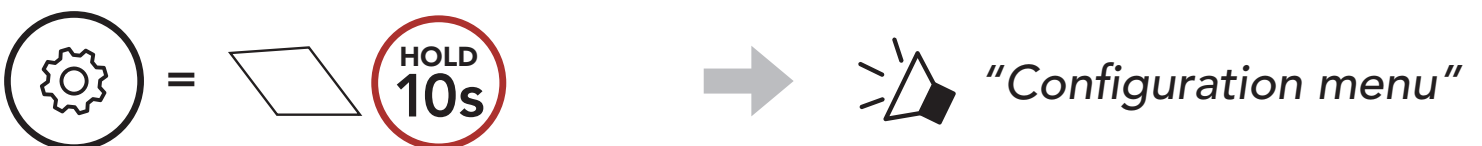


3. Select **SPIDER RT1** in the list of Bluetooth devices detected. If your Bluetooth device asks for a PIN, enter 0000.



4.3 GPS Pairing

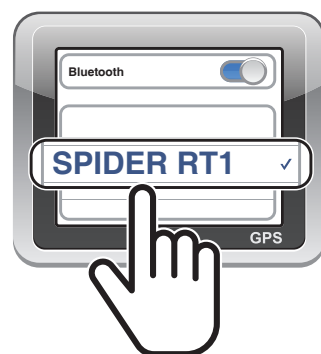
1. Press and hold the **Center Button** for **10 seconds**.



2. Double tap the **(+) Button**.



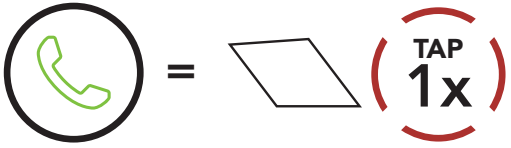
3. Select **SPIDER RT1** in the list of devices detected. If your Bluetooth device asks for a PIN, enter 0000.



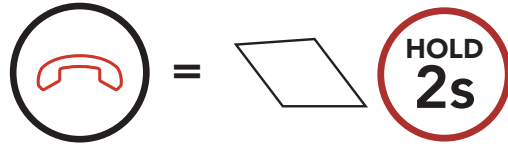
5. MOBILE PHONE USAGE

5.1 Making and Answering Calls

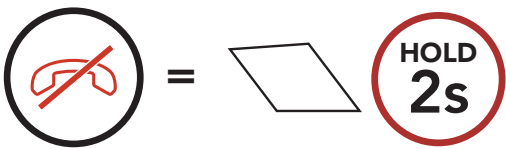
Answer a Call



End a Call



Reject a Call



Call a Voice Assistant



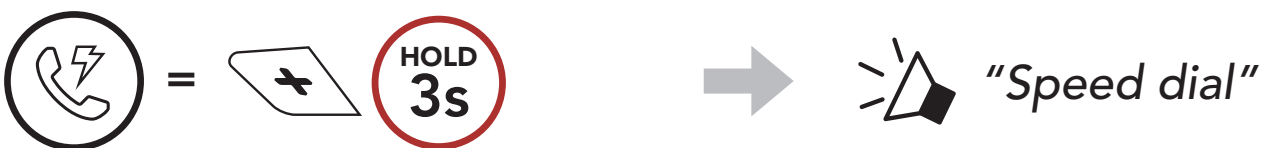
5.2 Speed Dialing

5.2.1 Assigning Speed Dial Presets

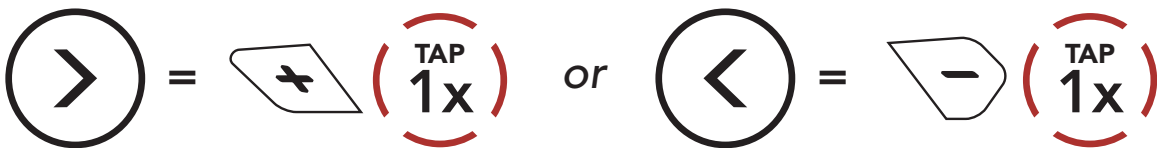
Speed Dial Presets could be assigned through the **Sena Device Manager** or the **Sena Motorcycles App**.

5.2.2 Using Speed Dial Presets

1. Enter into the **Speed Dial** menu.



2. Navigate forward or backward through **Speed Dial Preset** numbers.

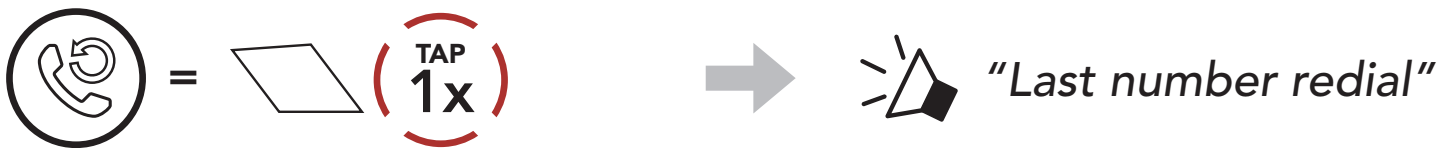


3. Call one of your **Speed Dial Presets** numbers.



4. Redial the last number called.

Redial Last Number



5.3 HD Voice (Always On)

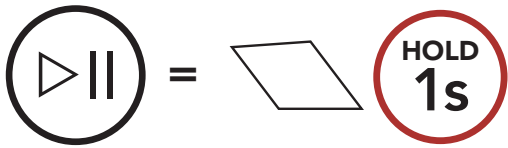
HD Voice allows you to communicate in high-definition during phone calls. This feature increases the quality so that the audio will be crisp and clear during phone call conversations.

Note: Refer to the manufacturer of your Bluetooth device that will be connected to the headset to see if it supports **HD Voice**.

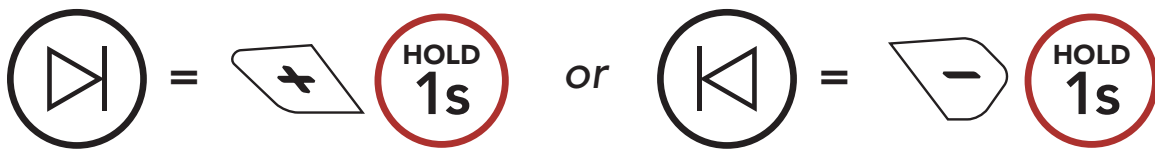
6. STEREO MUSIC

6.1 Playing Music with Bluetooth Devices

Play/Pause Music



Track Forward/Backward



7. MESH INTERCOM

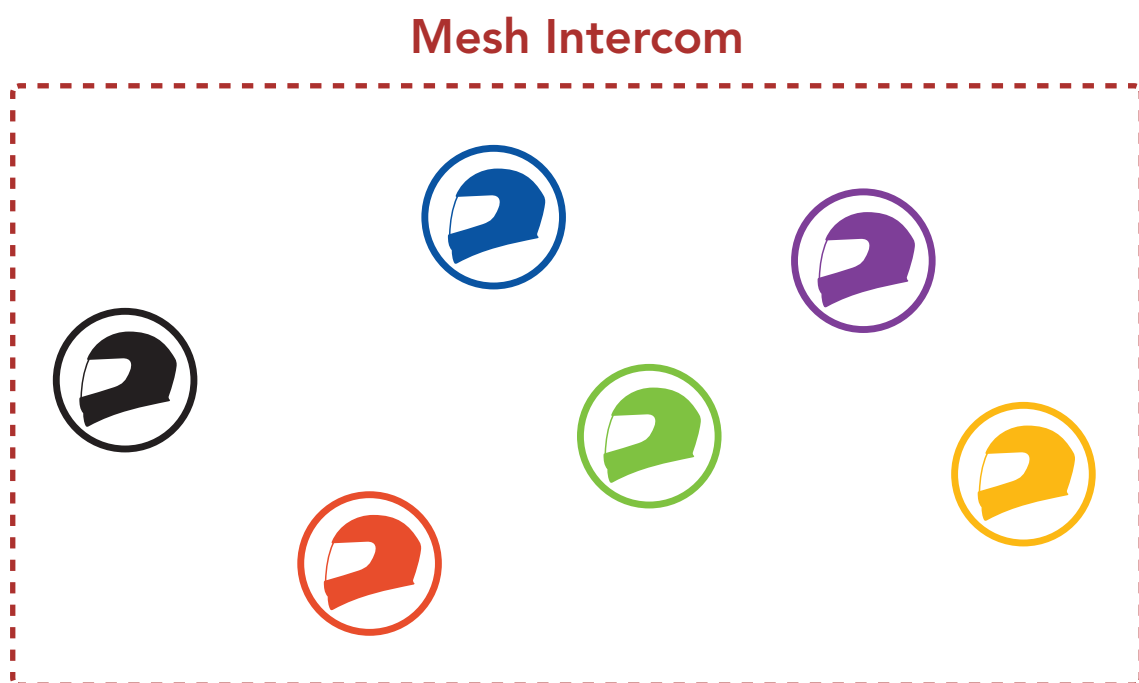
7.1 What is Mesh Intercom?

Mesh Intercom™ is a dynamic communication system created by Sena that provides instant and effortless bike-to-bike communication without a pre-grouping process. **Mesh Intercom** allows users to connect and communicate with nearby users without the need to pair each headset together.

The working distance between each **SPIDER RT1** in **Mesh Intercom** can be up to 1.2 mi (2 km) in open terrain. In open terrain, the **Mesh** can be extended up to 5 mi (8 km) between a minimum of six users.

Users can communicate in two modes:

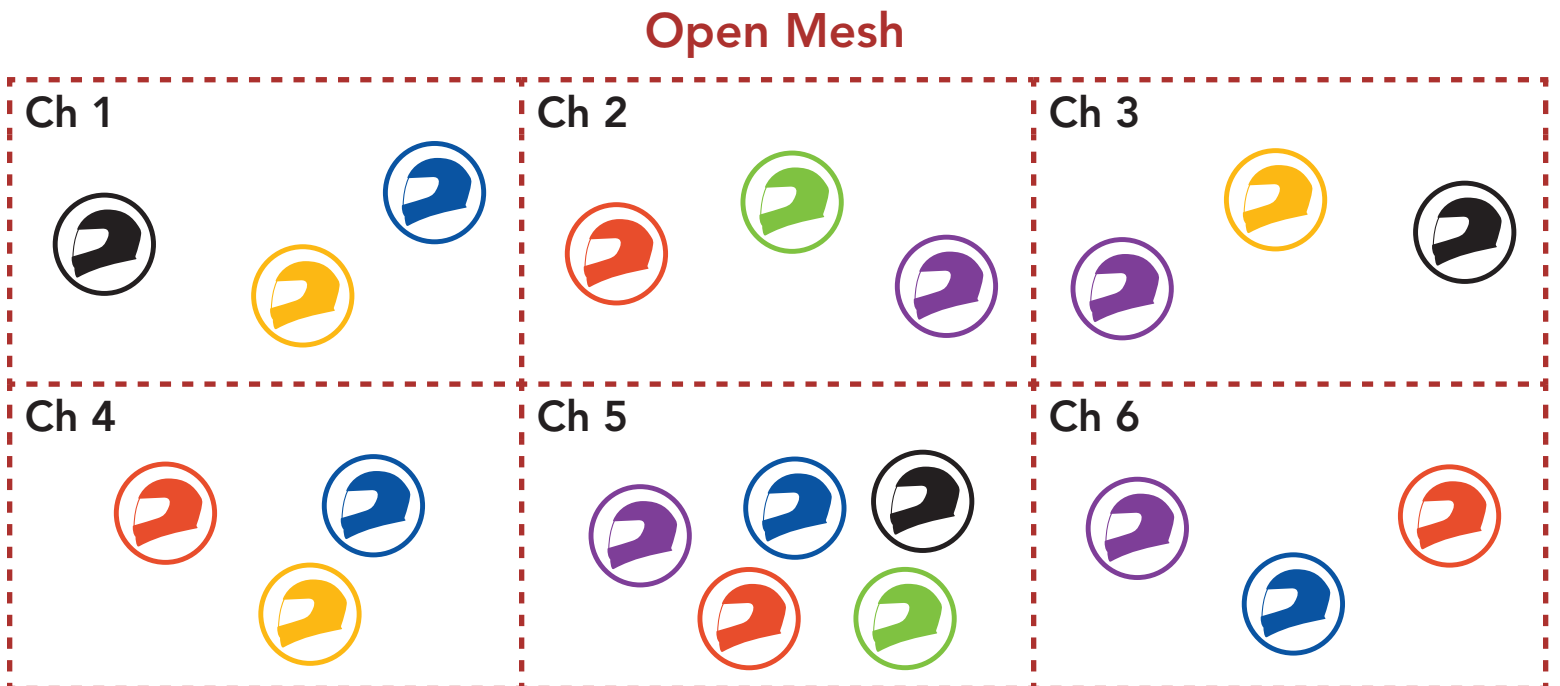
- Open Mesh™ for open group intercom conversations.
- Group Mesh™ for private group intercom conversations.



7.1.1 Open Mesh

Open Mesh is an open group intercom function. Users can freely communicate with each other in the same **Open Mesh** channel and select which channel (1-6) to use through the headset.

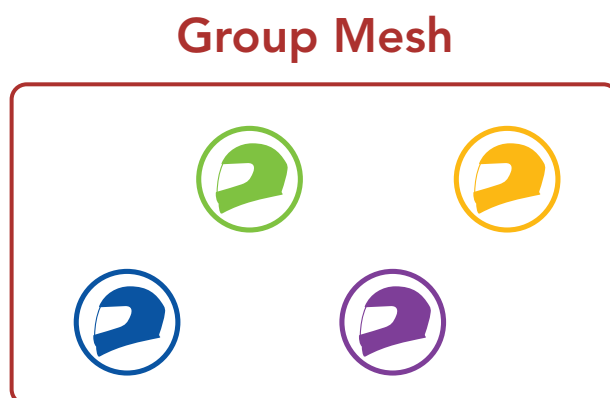
It can connect with a virtually unlimited number of users in each channel.



7.1.2 Group Mesh

Group Mesh is a closed group intercom function that allows users to join, leave, or rejoin a group intercom conversation without pairing each headset. Users can freely communicate with each other in the same private group in **Group Mesh**.

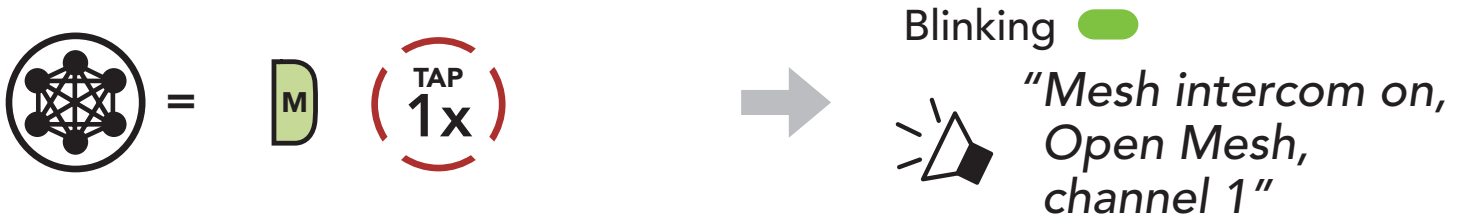
For closed intercom conversations using **Mesh Intercom**, a **Group Mesh** needs to be created by the users. When users create a private group in **Group Mesh** by **Mesh Grouping**, the headset automatically switches from **Open Mesh** to **Group Mesh**. Up to 24 users can all be connected in each private group.



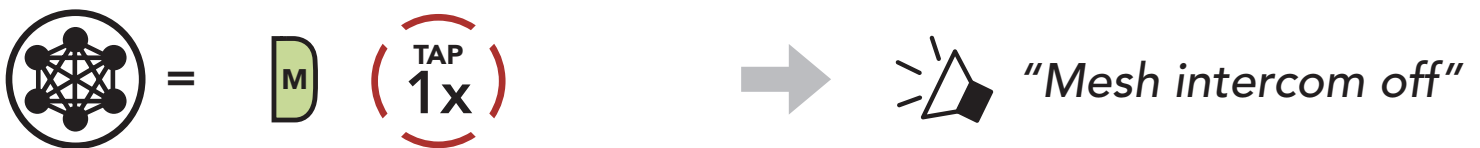
7.2 Starting Mesh Intercom

When **Mesh Intercom** is enabled, the **SPIDER RT1** will automatically connect to nearby **SPIDER RT1** users and allow them to talk to each other.

Mesh Intercom On



Mesh Intercom Off



7.3 Mesh Version Switch

Switch to Mesh 2.0 for Backward Compatibility

Mesh 3.0 is the latest Mesh Intercom technology, but to communicate with legacy products using Mesh 2.0, please switch to Mesh 2.0 using the **Sena Motorcycles App**.

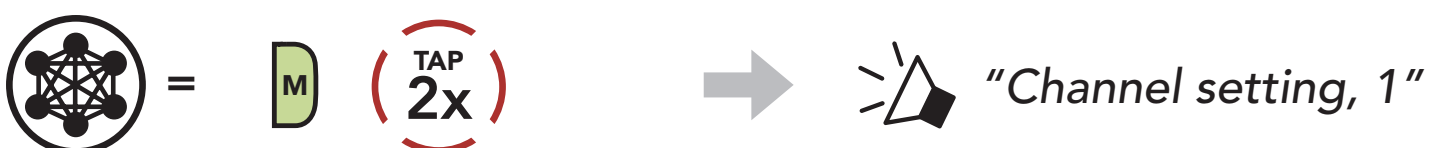
7.4 Using the Mesh in Open Mesh

When **Mesh Intercom** is enabled, the headset will be in **Open Mesh (default: channel 1)** initially.

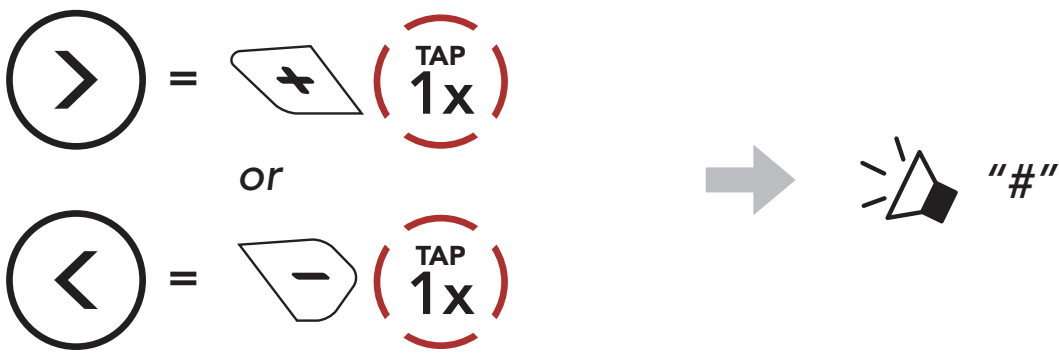
7.4.1 Channel Setting (Default: channel 1)

If the **Open Mesh** communication experiences interference because other groups are also using **channel 1 (default)**, change the channel. You can select from channels 1 to 6.

1. Double tap the **Mesh Intercom Button**.



2. Navigate between channels.



3. Save the channel.



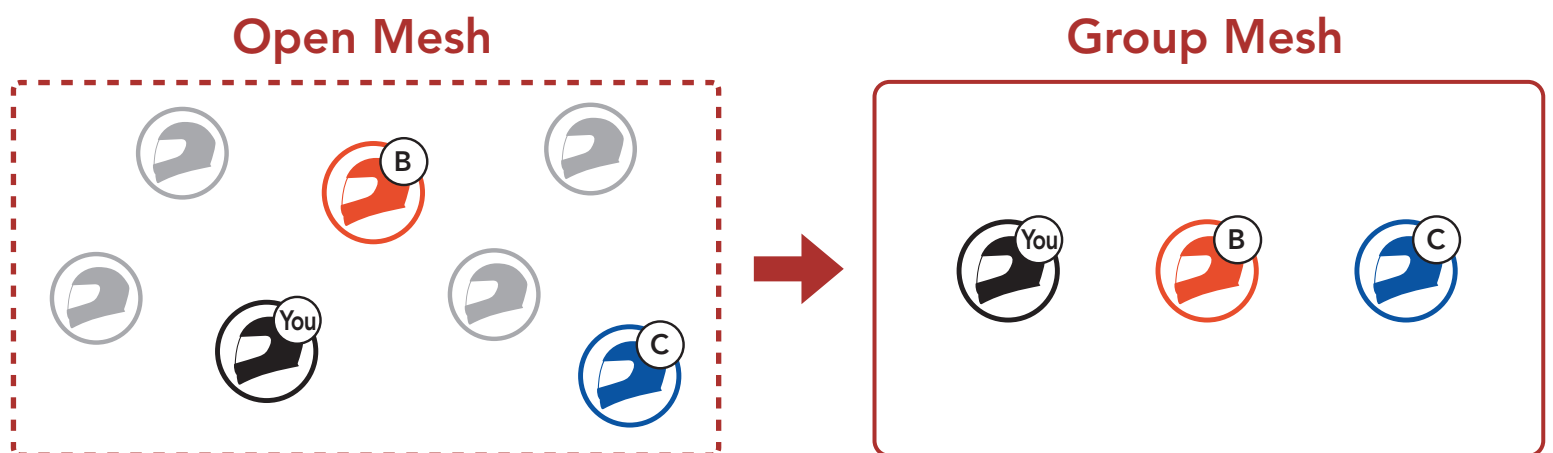
Note:

- If you do not press any button for approximately **10 seconds** in a specific channel, the channel is automatically saved.
- The channel will be remembered even if you turn off the **SPIDER RT1**.
- You can use the **Sena Motorcycles App** to change the channel.

7.5 Using Mesh in Group Mesh

7.5.1 Creating a Group Mesh

Creating a **Group Mesh** requires **two or more Open Mesh users**.



1. To enter **Mesh Grouping** to create a **Group Mesh**, press and hold the **Mesh Intercom Button** for **5 seconds** on the **users (You, B, and C)** headsets.



2. When **Mesh Grouping** is completed, the **users (You, B and C)** will hear a voice prompt on their headset as **Open Mesh** switches to **Group Mesh**.

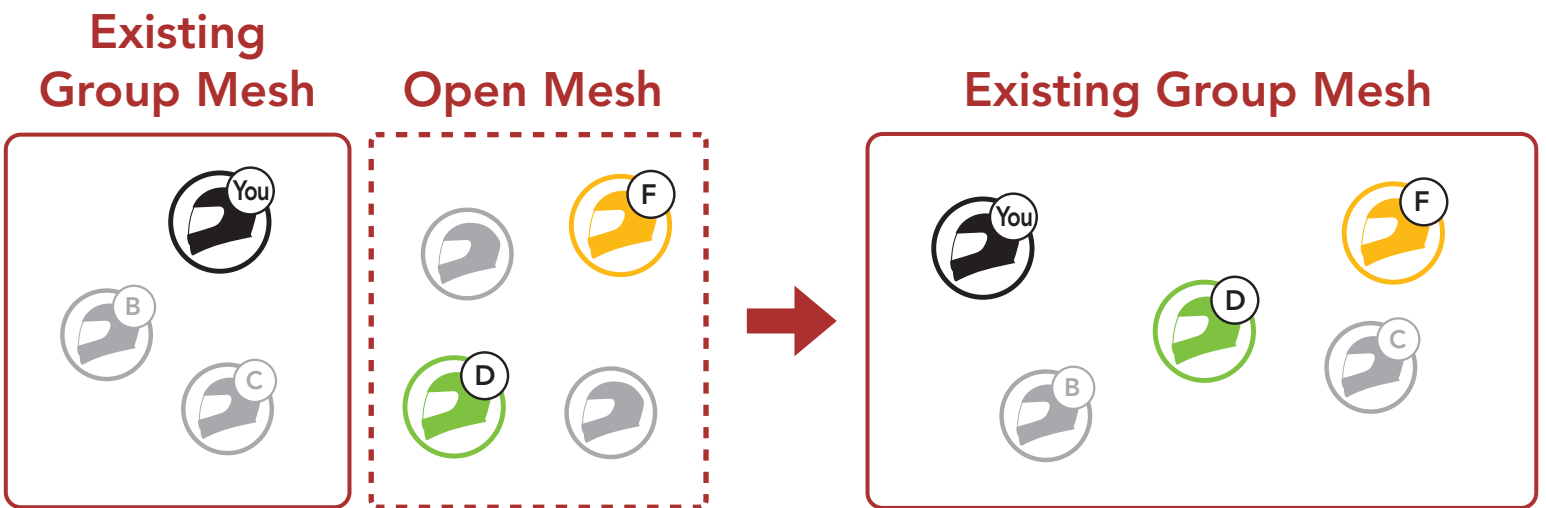


Note:

- If the **Mesh Grouping** is not completed within **30 seconds**, users will hear a voice prompt, **"Grouping failed."**
- If you want to cancel during the **Mesh Grouping**, tap the **Mesh Intercom Button**.

7.5.2 Joining an Existing Group Mesh

One of the current users in an **Existing Group Mesh** can allow **new users (one or more)** in **Open Mesh** to join the **Existing Group Mesh**.



1. To enter **Mesh Grouping** to join the **Existing Group Mesh**, press and hold the **Mesh Intercom Button** for **5 seconds** on the headsets of **one (You) of the current users** in the **Existing Group Mesh** and the **new users (D and F)** in **Open Mesh**.



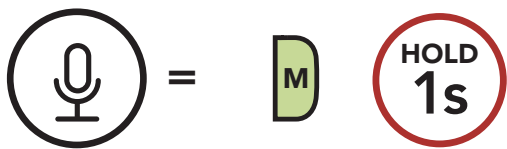
2. When **Mesh Grouping** is completed, the **new users (D and F)** will hear a voice prompt on their headset as **Open Mesh** switches to **Group Mesh**.



Note: If the **Mesh Grouping** is not completed within **30 seconds**, the current user (You) will hear low-toned double beeps and the new users (D and F) will hear a voice prompt, **"Grouping failed."**

7.6 Enable/Disable Mic (Default: Enable)

Users can enable/disable the microphone when communicating in a **Mesh Intercom**.

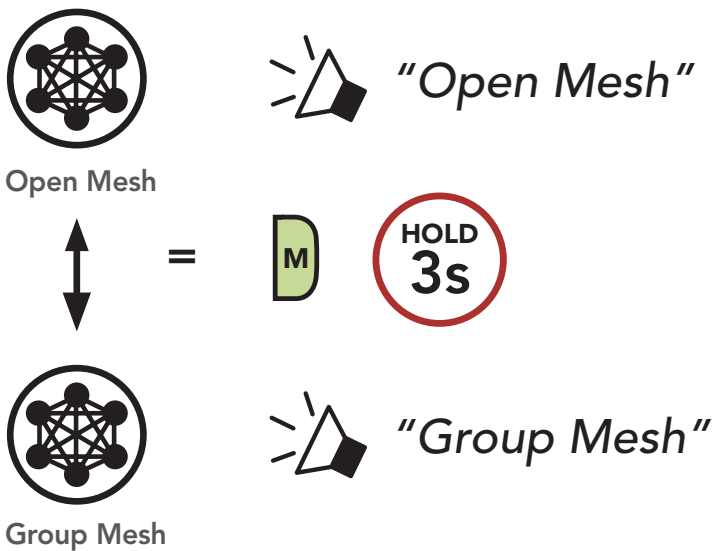


7.7 Toggling Open Mesh/Group Mesh

Users are able to toggle between **Open Mesh** and **Group Mesh** without resetting the **Mesh**. This allows users to keep the **Group Mesh Network** connection information while in **Open Mesh**.

Users can toggle to **Group Mesh** to communicate with participants from the stored **Group Mesh Network** connection information.

Toggle Between Open Mesh and Group Mesh

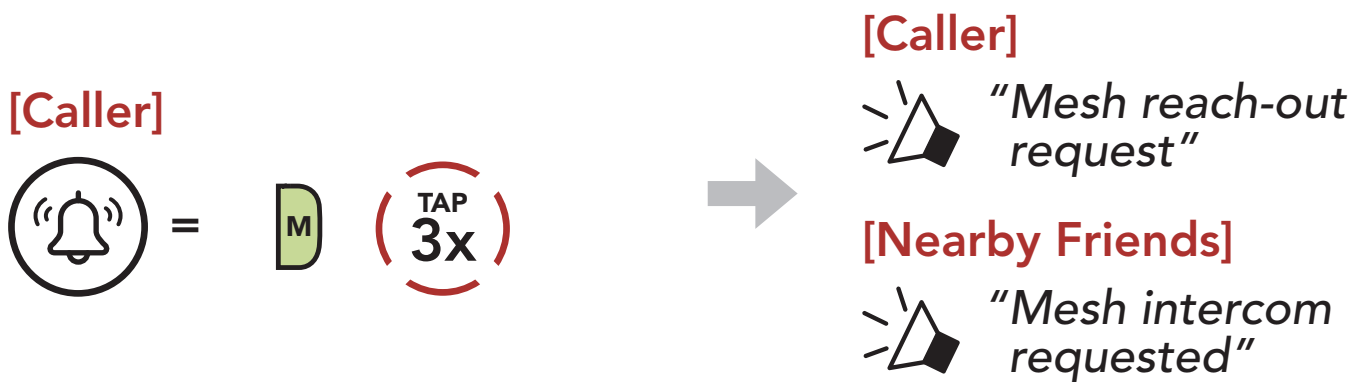


Note: If you have never participated in **Group Mesh**, you cannot toggle between **Open Mesh** and **Group Mesh**. You will hear a voice prompt, **"No group available."**

7.8 Mesh Reach-Out Request

You (caller) can send a request message to turn on the Mesh Intercom to nearby* friends who have it turned off.

1. If you want to send or receive a request message, you need to enable **Mesh Reach-Out** on the **Sena Motorcycles App**. Please refer to **Section 10.2: "Software Configuration Setting."**
2. While your headset's Mesh Intercom is on, you (caller) send a request message using the **headset's Button** or the **Sena Motorcycles App**.



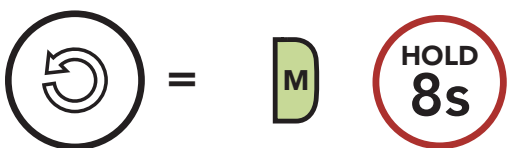
3. Friends who receive the request message need to manually turn on their Mesh Intercom using the **headset's Button** or the **Sena Motorcycles App**.

Note:

- *: Up to 109 yds (100 m) in open terrain
- To use the **Mesh Reach-Out Request** function, **you (caller) who sends a request message and the friends who receive the request message must update the headset to the latest firmware version and the app to the latest version.**

7.9 Reset Mesh

If a headset in an **Open Mesh** or **Group Mesh** resets the **Mesh**, it will automatically return to **Open Mesh (default: channel 1)**.



8. MESH AUDIO MULTITASKING (ALWAYS ON)

Audio Multitasking allows you to have an intercom conversation while simultaneously listening to music.

The overlaid audio is played in the background with reduced volume whenever there is an intercom conversation and will return to normal volume once the conversation is finished.

The **Audio Multitasking** can be configured through the **Intercom-Audio Overlay Sensitivity** and the **Audio Overlay Volume Management settings**.

The **Intercom-Audio Overlay Sensitivity** and the **Audio Overlay Volume Management settings** can be found in the **Software Configuration Setting**, accessible through the **Sena Device Manager** or the **Sena Motorcycles App**.

9. FUNCTION PRIORITY AND FIRMWARE UPDATE

9.1 Function Priority

- (highest)** Mobile phone
Mesh Intercom
- (lowest)** Bluetooth stereo music

A lower-priority function gets interrupted by a higher-priority function. For example, stereo music will be interrupted by an incoming mobile phone call.

9.2 Firmware Update

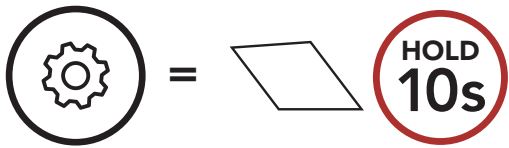
You can update the firmware via Over-The-Air (OTA) directly from the settings in the **Sena Motorcycles App** or via the **Sena Device Manager** by connecting the SPIDER RT1 to your PC.

Download the **Sena Device Manager** at [sena.com](https://www.sena.com).

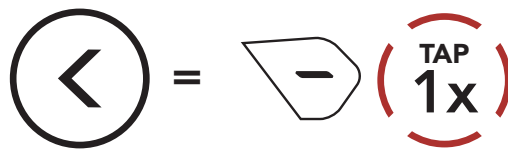
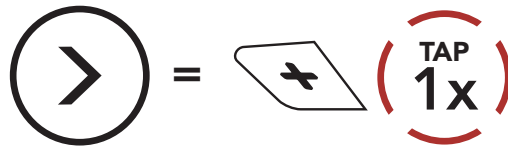
10. CONFIGURATION SETTING

10.1 Headset Configuration Menu

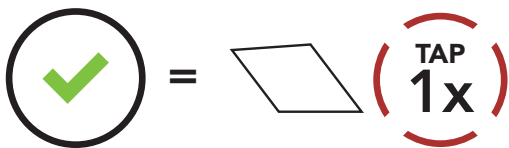
Access the Configuration Menu



Navigate Between Menu Options



Execute Menu Options



Headset Configuration Menu

Voice Configuration Menu	Tap the Center Button
Second Mobile Phone Pairing	None
GPS Pairing	None
Remote Control Pairing	Execute
Factory Reset	Execute
Exit	Execute

10.1.1 Remote Control Pairing

You can remotely control the headset using **Sena Remote Control devices** (sold separately).

1. Turn on the headset and the Remote Control device.
2. Execute **Remote Control Pairing**.
3. Enter pairing mode in the Remote Control device. The headset will automatically connect with the Remote Control device in pairing mode.

10.2 Software Configuration Setting

You can change the settings of the headset through the **Sena Device Manager** or the **Sena Motorcycles App**.

10.2.1 Language

You can select the device language. The selected language is maintained even when the headset is rebooted.

10.2.2 Mesh Reach-Out (Default: Disable)

When the **Mesh Reach-Out** is enabled, a Mesh Reach-Out request message can be sent or received. If the **Mesh Reach-Out** is disabled, a Mesh Reach-Out request message cannot be sent or received.

10.2.3 Equalizer (Default: Off)

You can use the **Equalizer** to increase/decrease the decibel level of different frequency ranges of audio.

- **Balance** will adjust all of the frequency ranges to be the same volume level (0 dB).
- **Bass Boost** will increase the bass range of audio (20 Hz - 250 Hz).
- **Mid Boost** will increase the mid range of audio (250 Hz - 4 kHz).
- **Treble Boost** will increase the high range of audio (4 kHz - 20 kHz).

10.2.4 VOX Phone (Default: Enable)

If this feature is enabled, you can answer incoming calls by voice. When you hear a ringtone for an incoming call, you can answer the phone by saying a word such as **"Hello"** loudly or by blowing air into the microphone. **VOX Phone** is temporarily disabled if you are connected to intercom. If this feature is disabled, you have to tap the **Center Button** to answer an incoming call.

10.2.5 VOX Sensitivity (Default: 3)

Vox Sensitivity can adjust the sensitivity of Vox Phone. **Level 5** is the highest sensitivity setting and **level 1** is the lowest.

10.2.6 Intercom-Audio Overlay Sensitivity (Default: 3)

The music will be lowered to play in the background if you talk over the intercom while the overlaid audio is playing. You can adjust the intercom sensitivity to activate this background audio mode. **Level 1** has the lowest sensitivity and **level 5** has the highest sensitivity.

Note: If your voice is not louder than the sensitivity of the selected level, the overlaid audio will not be lowered.

10.2.7 Audio Overlay Volume Management (Default: Disable)

The music overlaid audio reduces in volume whenever there is an ongoing intercom conversation. If **Audio Overlay Volume Management** is enabled, the volume level of the overlaid audio will not be reduced during an intercom conversation.

10.2.8 Voice Prompt (Default: Enable)

You can disable **Voice Prompts** by software configuration settings, but the following voice prompts are always on.

- Headset configuration settings menu, battery level indicator, speed dial

10.2.9 Advanced Noise Control™ (Always On)

The background noise is reduced during an intercom conversation.

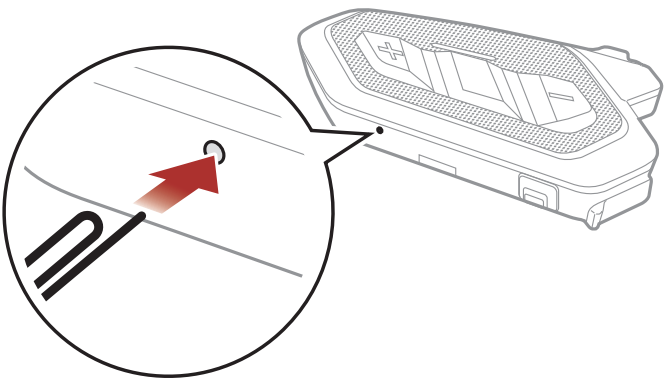
11. TROUBLESHOOTING

Please visit [sena.com](https://www.sena.com) for more troubleshooting information.

11.1 Fault Reset

When the headset is not working properly, you can easily reset the unit:













1. Locate the **Pinhole Fault Reset Button** at the bottom of the main unit.
2. Gently insert a paperclip into the hole and tap the **Pinhole Fault Reset Button** with light pressure. The headset will shut down.



Note: Fault Reset will not restore the headset to factory default settings.

11.2 Factory Reset

To erase all of your settings and start fresh, the headset can be restored to factory default settings using the **Factory Reset** feature.

1.  =   →  "Configuration menu"
2.  =   →  "Factory reset"
3.  =   →  "Headset reset, good-bye"



Copyright 2024 Sena Technologies, Inc.
All rights reserved.

© 1998–2024 Sena Technologies, Inc. All rights reserved.

Sena Technologies, Inc. reserves the right to make any changes and improvements to its product without providing prior notice.

Sena™ is a trademark of Sena Technologies, Inc. or its subsidiaries in the USA and other countries. SF1™, SF2™, SF4™, SFR™, SRL™, SRL2™, SRL3™, SRL-EXT™, SRL-Mesh™, Momentum™, Momentum INC™, Momentum Lite™, Momentum Pro™, Momentum INC Pro™, Momentum EVO™, Cavalry™, CAVALRY 2™, Latitude SR™, Latitude SX™, Latitude S1™, 30K™, 33i™, 60S™, 50S™, 50R™, 50C™, 5S™, 5R™, 5R LITE™, 20S EVO™, 20S™, 10S™, 10C™, 10C PRO™, ProRide EVO™, 10C EVO™, 10U™, 10Upad™, 10R™, ACS10™, ACS-RAM™, BiKom 20™, B10™, B20™, E30™, J30™, C1™, C10™, C20™, CAST™, 3S™, 3S PLUS™, SMH5™, SMH5-FM™, SMH5 MultiCom™, SMH10™, SMH10R™, SPH10™, SPH10H-FM™, Savage™, Prism Tube WiFi™, Prism™, Bluetooth Audio Pack for GoPro®, IMPULSE™, FURY™, R1™, R1 EVO™, R1 EVO CS™, R2™, R2 EVO™, R2X™, M1™, M1 EVO™, S1™, RUMBA™, RC1™, RC3™, RC4™, STRYKER™, Handlebar Remote™, Wristband Remote™, PHANTOM™, PowerPro Mount™, Powerbank™, FreeWire™, WiFi Docking Station™, WiFi Sync Cable™, WiFi Adapter™, +mesh™, +Mesh Universal™, MeshPort Blue™, MeshPort Red™, MeshPort Black™, Econo™, OUTLANDER M™, OUTRUSH™, OUTRUSH R™, OUTSTAR™, OUTSTAR S™, OUTFORCE™, OUTRIDE™, OUTRUSH M™, EcoCom™, Parani A10™, Parani A20™, Parani M10™, pi™, Snowtalk™, Snowtalk2™, SR10™, SR10i™, SM10™, SPIDER RT1™, SPIDER ST1™, SURGE™, TALKIE™, U1™, X1™, X1 Pro™, X1S™, EXPAND™, EXPAND BOOM™, EXPAND MESH™, Bluetooth Mic & Intercom™, Tufftalk™, Tufftalk Lite™, Tufftalk M™, NAUTITALK Bosun™, NAUTITALK N2R™ are trademarks of Sena Technologies, Inc. or its subsidiaries. These trademarks may not be used without the express permission of Sena.

GoPro® is a registered trademark of Woodman Labs of San Mateo, California. Sena Technologies, Inc. ("Sena") is not affiliated with Woodman Labs, Inc. The Sena Bluetooth Pack for GoPro® is an aftermarket accessory specially designed and manufactured by Sena Technologies, Inc. for the GoPro® Hero3 and Hero4 allowing for Bluetooth capabilities.

The Bluetooth® word mark and logos are owned by the Bluetooth SIG, Inc. and any use of such marks by Sena is under license. iPhone® and iPod® touch are registered trademarks of Apple Inc.

Sena Technologies, Inc.
152 Technology Drive, Irvine, CA 92618